

JOJO SIX DEPARTURE (RNAV)

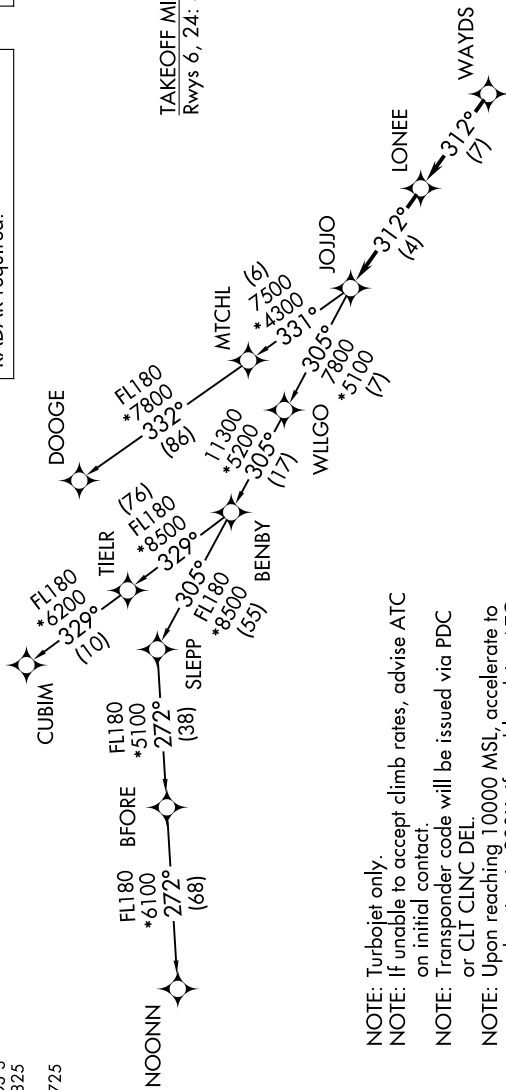
SE-2, 14 MAY 2026 to 11 JUN 2026

CHARLOTTE DEP CON
120.05 307.8
AWOS-3
120.825
GCO
121.725

RNAV 1 - DME/DME/IRU or GPS.
RADAR required.

**TOP ALTITUDE:
3000**

TAKEOFF MINIMUMS
Rwys 6, 24: Standard.

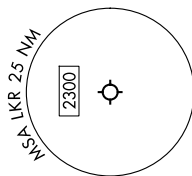


- NOTE: Turbojet only.
- NOTE: If unable to accept climb rates, advise ATC on initial contact.
- NOTE: Transponder code will be issued via PDC or CLT CLNC DEL.
- NOTE: Upon reaching 10000 MSL, accelerate to and maintain 280K, if unable advise ATC.

DEPARTURE ROUTE DESCRIPTION

Climb on heading assigned by ATC for RADAR vectors to WAYDS, then on depicted route to JOJO. Then on assigned transition. Maintain 3000, expect filed altitude 10 minutes after departure.

- CUBIM TRANSITION (JOJO6.CUBIM)
- DOOGE TRANSITION (JOJO6.DOOGE)
- NOONN TRANSITION (JOJO6.NOONN)



NOTE: Chart not to scale.

JOJO SIX DEPARTURE (RNAV)

SE-2, 14 MAY 2026 to 11 JUN 2026