

(KWEEN6.KWEEN) 26134

AL-5853 (FAA)

LANCASTER COUNTY-MC WHIRTER FLD (LKR)  
LANCASTER, SOUTH CAROLINA

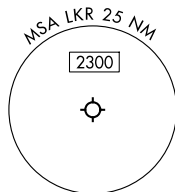
# KWEEN SIX DEPARTURE (RNAV)

CHARLOTTE DEP CON  
120.05 307.8  
AWOS-3  
120.825  
GCO  
121.725

RNAV 1 - DME/DME/IRU or GPS.

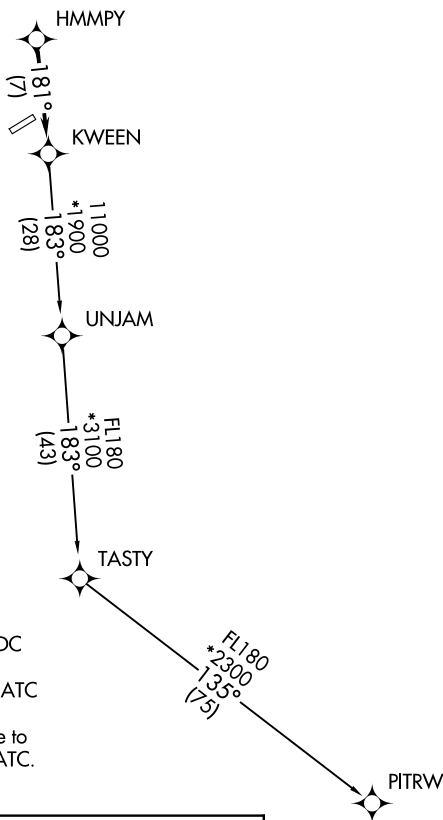
RADAR required.

**TOP ALTITUDE:  
3000**



### TAKEOFF MINIMUMS

Rwys 6, 24: Standard.



- NOTE: Turbojet only.
- NOTE: Transponder code will be issued via PDC or CLT CLNC DEL.
- NOTE: If unable to accept climb rates, advise ATC on initial contact.
- NOTE: Upon reaching 10000 MSL, accelerate to and maintain 280K, if unable advise ATC.

### DEPARTURE ROUTE DESCRIPTION

Climb on heading assigned by ATC for RADAR vectors to HMMPY, then on track 181° to KWEEN, then on assigned transition, maintain 3000, expect filed altitude 10 minutes after departure.

PITRW TRANSITION (KWEEN6.PITRW)  
UNJAM TRANSITION (KWEEN6.UNJAM)

NOTE: Chart not to scale.

**KWEEN SIX DEPARTURE (RNAV)**  
(KWEEN6.KWEEN) 14MAY26

LANCASTER, SOUTH CAROLINA  
LANCASTER COUNTY-MC WHIRTER FLD (LKR)

SE-2, 14 MAY 2026 to 11 JUN 2026

SE-2, 14 MAY 2026 to 11 JUN 2026