

WAAS CH 86816 W06A	APP CRS 065°	Rwy ldg TDZE Apt Elev	5899 470 486
--	------------------------	-----------------------------	---

RNAV (GPS) RWY 6

LANCASTER COUNTY-MC WHIRTER FLD (LKR)

⚠ When VGSI inoperative, Circling Rwy 24 NA at night. Baro-VNAV NA when using Rock Hill altimeter setting. For uncompensated Baro-VNAV systems, LNAV/VNAV NA below -15°C (5°F) or above 48°C (118°F). DME/DME RNP -0.3 NA. When local altimeter setting not received, use Rock Hill altimeter setting and increase LPV DA 69 feet, LNAV/VNAV DA 98 feet and all MDA 80 feet, and increase LPV, LNAV/VNAV all Cats, LNAV and Circling Cats C and D visibilities ¼ mile. VDP NA when using Rock Hill altimeter setting.

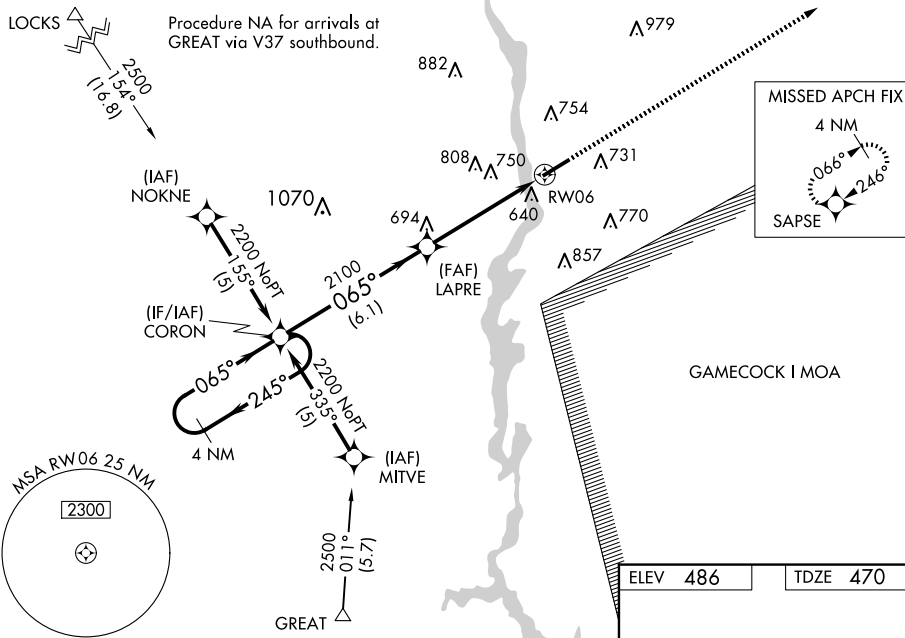
MISSED APPROACH:
Climb to 2500 direct SAPSE and hold.

AWOS-3
120.825

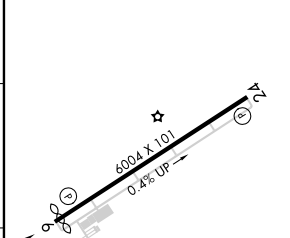
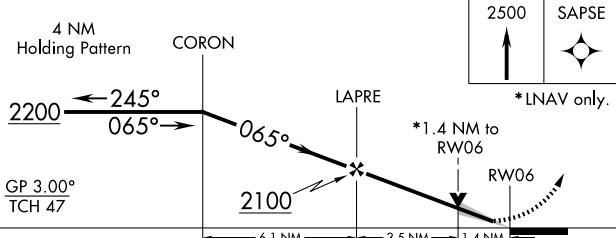
CHARLOTTE APP CON
120.05 307.8

GCO
121.725

UNICOM
122.725 (CTAF) 0



ELEV 486	TDZE 470
----------	----------



CATEGORY	A	B	C	D
LPV DA		670-¾	200 (200-¾)	
LNAV/VNAV DA		993-2	523 (600-2)	
LNAV MDA	940-1	470 (500-1)	940-1½ 470 (500-1½)	940-1½ 470 (500-1½)
CIRCLING	1040-1 554 (600-1)	1060-1 574 (600-1)	1120-1¾ 634 (700-1¾)	1160-2½ 674 (700-2½)

MIRL Rwy 6-24 0
REIL Rws 6 and 24 0

SE-2, 14 MAY 2026 to 11 JUN 2026

SE-2, 14 MAY 2026 to 11 JUN 2026