


LOC I-GTR <b>110.7</b>	APP CRS <b>182°</b>	Rwy Ldg <b>8003</b>
		TDZE <b>264</b>
		Apt Elev <b>264</b>

# ILS or LOC RWY 18

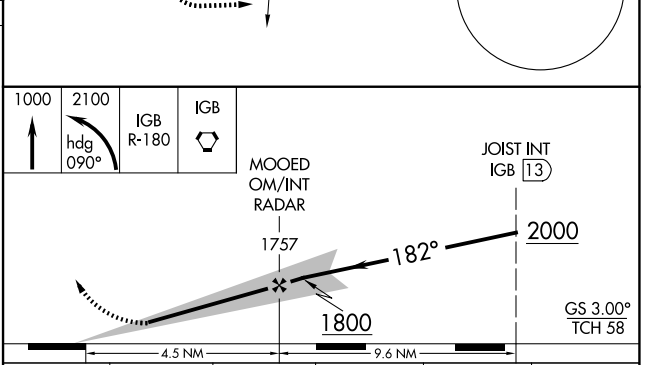
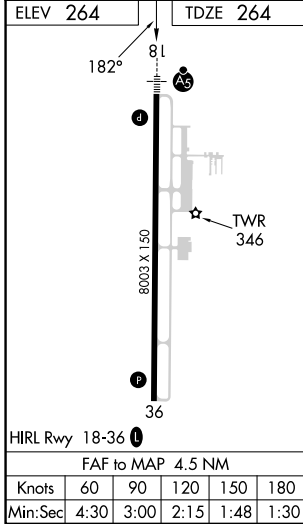
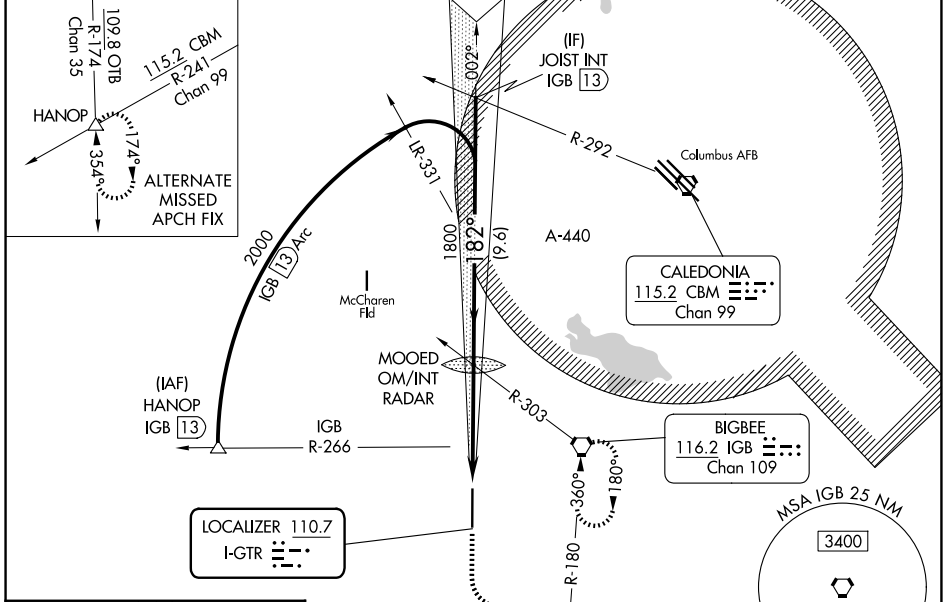
GOLDEN TRIANGLE RGNL (GTR)

**A** For inop ALS, increase S-ILS 18 Cat E visibility to 3/4 SM, S-LOC 18 Cat E visibility to 1 1/2 SM.

MALSR 

MISSED APPROACH: Climb to 1000 then climbing left turn to 2100 on heading 090° and on IGB VORTAC R-180 to IGB VORTAC and hold, continue climb-in-hold to 2100.

ATIS <b>126.375</b>	COLUMBUS APP CON★ <b>135.6 323.275</b>	GOLDEN TRIANGLE TOWER★ <b>118.2 (CTAF) 298.875</b>	GND CON <b>135.375 322.475</b>	UNICOM <b>122.95</b>
------------------------	---	---	-----------------------------------	-------------------------



CATEGORY	A	B	C	D	E
S-ILS 18	464-1/2 200 (200-1/2)				
S-LOC 18	660-1/2	396 (400-1/2)	660-5/8		396 (400-5/8)
CIRCLING	760-1	496 (500-1)	960-2 696 (700-2)	960-2 1/4 696 (700-2 1/4)	960-2 1/2 696 (700-2 1/2)

SC-4, 14 MAY 2026 to 11 JUN 2026

SC-4, 14 MAY 2026 to 11 JUN 2026