

VORTAC RQZ 112.2 Chan 59	APP CRS 010°	Rwy Ldg 5500 TDZE 978 Apt Elev 984
--	------------------------	---

VOR/DME RWY 2

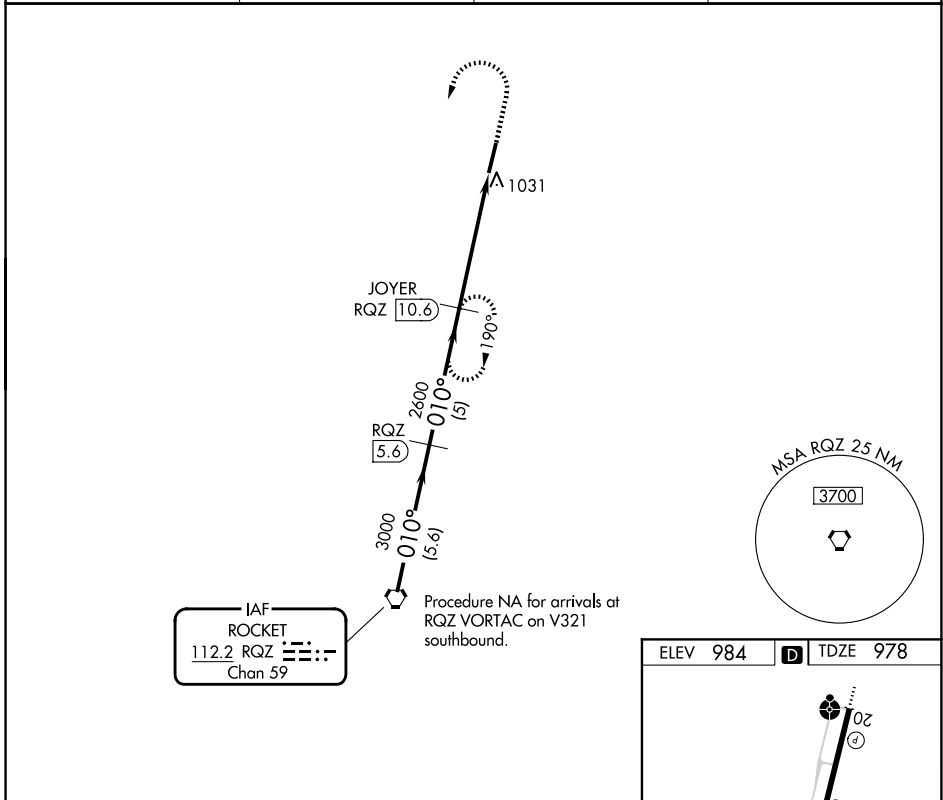
FAYETTEVILLE MUNI (FYM)

⚠ When local altimeter setting not received, use Huntsville Exec Tom Sharp Jr Fld altimeter setting and increase all MDA 120 feet; increase S-2 Cat C/D visibility ¼ SM, Circling Cat C visibility ½ SM, and Circling Cat D visibility ¼ SM. Rwy 2 helicopter visibility reduction below ¾ SM NA.

⚠ NA

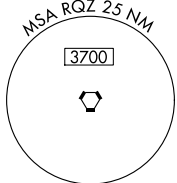
MISSED APPROACH: Climb to 2000 then climbing left turn to 3000 via RQZ R-010 to JOYER INT and hold.

AWOS-3 135.275	HUNTSVILLE APP CON ★ 125.6 354.1	CLNC DEL (GCO) 121.725	UNICOM 122.8 (CTAF) 0
--------------------------	--	----------------------------------	---------------------------------

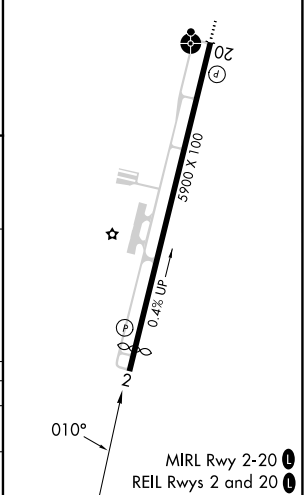
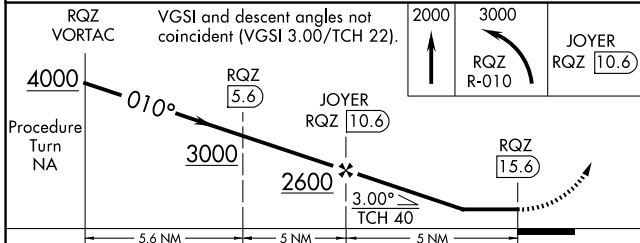


IAF
ROCKET
112.2 RQZ
Chan 59

Procedure NA for arrivals at RQZ VORTAC on V321 southbound.



ELEV 984	D	TDZE 978
----------	----------	----------



CATEGORY	A	B	C	D
S-2	1400-1	422 (500-1)	1400-1¼ 422 (500-1¼)	1400-1½ 422 (500-1½)
CIRCLING	1420-1 436 (500-1)	1540-1 556 (600-1)	1580-1½ 596 (600-1½)	1580-2 596 (600-2)

SE-1, 14 MAY 2026 to 11 JUN 2026

SE-1, 14 MAY 2026 to 11 JUN 2026