

LOC I-HSA 110.35	APP CRS 182°	Rwy Ldg TDZE Apt Elev	8498 23 23
----------------------------	------------------------	-----------------------------	---------------------------------------

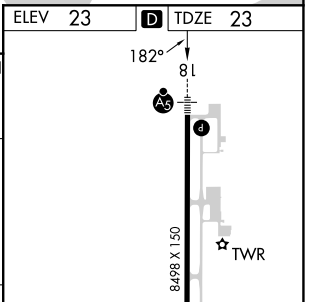
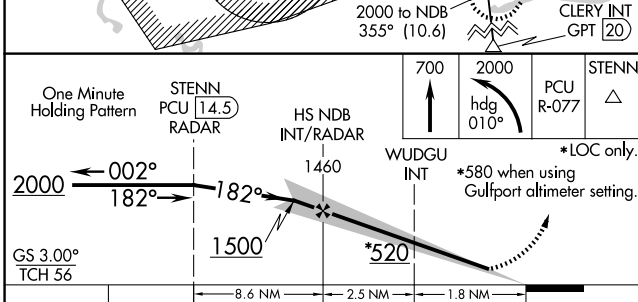
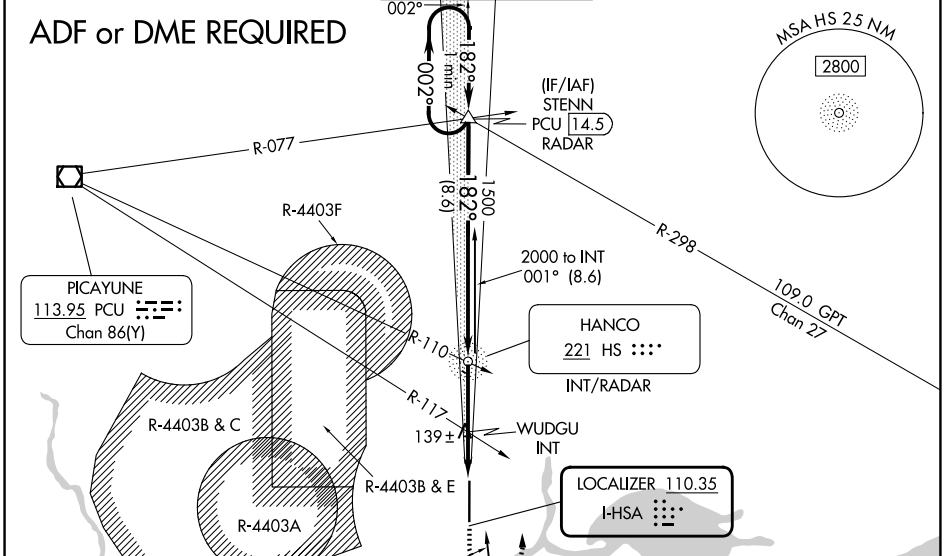
ILS Z or LOC Z RWY 18

STENNIS INTL (HSA)

⚠ Circling NA for Cat E W of Rwy 18-36. ADF or DME required. When local altimeter setting not received, use Gulfport altimeter setting: increase DA to 270 feet; increase all MDA 60 feet and S-LOC 18 Cats C/D/E visibility ½ mile, Circling Cat C visibility ½ mile and Cats D/E visibility ¼ mile. WUDGU FIX minimums: increase S-LOC 18 Cats C/D/E visibility ½ mile, and Circling Cats D/E ¼ mile. For inop MALSRS, increase S-ILS 18 Cat E visibility to ¾ mile, and S-LOC 18 Cats C/D/E visibility to 1 ¾ mile. WUDGU FIX minimums: increase S-LOC 18 Cats C/D/E visibility to 1 mile. For inop MALSRS when using Gulfport altimeter setting, increase S-ILS 18 Cat E visibility to ¾ mile and S-LOC Cat E visibility to 1 ¾ mile. WUDGU FIX minimums: increase S-LOC 18 Cat E visibility to 1 ¾ mile.

MALSRS
 MISSED APPROACH:
 Climb to 700 then climbing left turn to 2000 on heading 010° and on PCU VOR/DME R-077 to STENN INT and hold.

AWOS-3PT 118.375	GULFPORT APP CON* 124.6 354.1 (130°-309°) 127.5 254.25 (310°-129°)	STENNIS TOWER* 127.15 (CTAF) 0 229.4	GND CON 121.725 229.4	UNICOM 122.95
----------------------------	--	---	---------------------------------	-------------------------



CATEGORY	A	B	C	D	E
S-ILS 18	223-½ 200 (200-½)				
S-LOC 18	520-½	497 (500-½)	520-1 497 (500-1)		
CIRCLING	520-1	497 (500-1)	520-1½ 497 (500-1½)	820-2½ 797 (800-2½)	820-2¾ 797 (800-2¾)
WUDGU FIX MINIMUMS (DUAL VOR RECEIVERS REQUIRED)					
S-LOC 18	400-½	377 (400-½)	400-¾ 377 (400-¾)		
CIRCLING	480-1	457 (500-1)	520-1½ 497 (500-1½)	820-2½ 797 (800-2½)	820-2¾ 797 (800-2¾)

REIL Rwy 36	36
HIRL Rwy 18-36	36
FAF to MAP 4.3 NM	
Knots	60 90 120 150 180
Min:Sec	4:18 2:52 2:09 1:43 1:26

SC-4, 14 MAY 2026 to 11 JUN 2026

SC-4, 14 MAY 2026 to 11 JUN 2026