

NDB HS	APP CRS	Rwy Ldg	<b>8498</b>
<b>221</b>	<b>181°</b>	TDZE	<b>23</b>
		Apt Elev	<b>23</b>

# NDB RWY 18

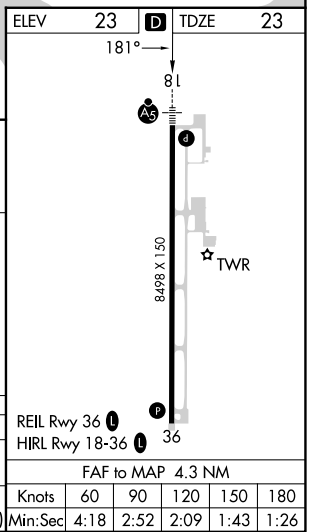
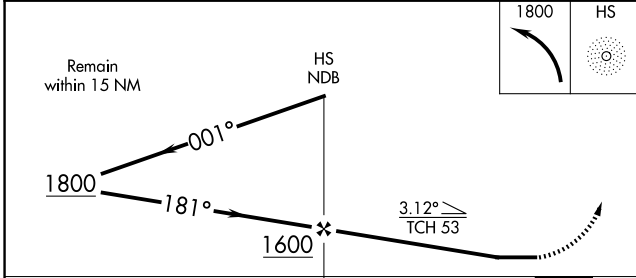
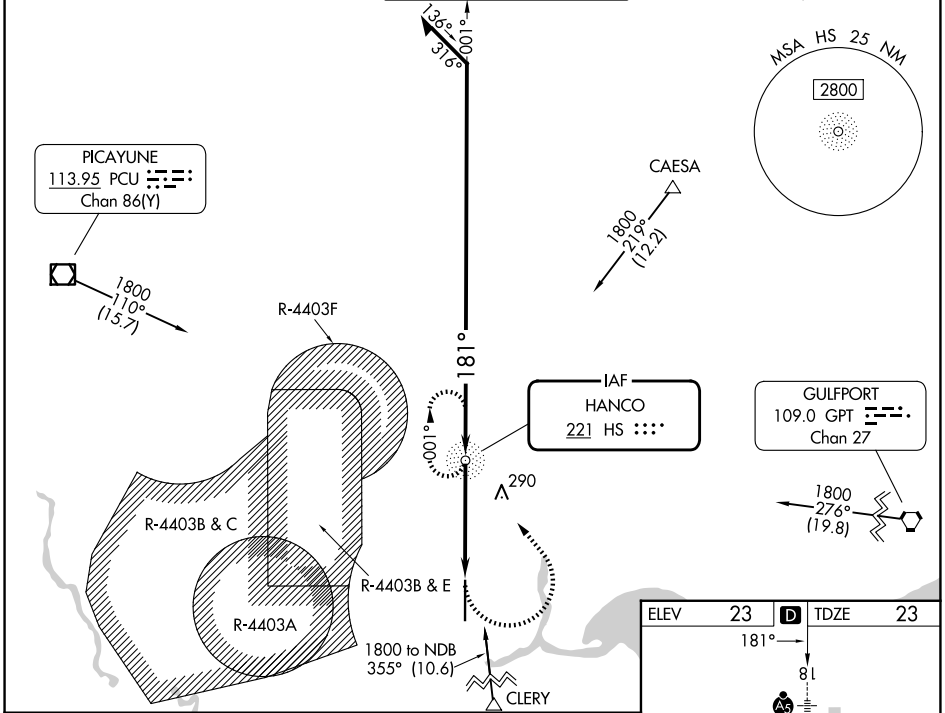
STENNIS INTL (HSA)

Procedure NA when R4403B and R4403E are active. Circling NA for Cat E west of Rwy 18-36.  
**⚠** When local altimeter setting not received use Gulfport altimeter setting and increase all MDAs: 60 feet and increase S-18 Cat C/D/E and Circling Cat C visibility 1/8 SM and Circling Cat D/E visibility 1/4 SM. For inop ALS, increase S-18 Cat A/B visibility to 1 SM, and Cat C/D/E visibility to 1 1/2 SM. For inop ALS when using Gulfport altimeter setting, increase Cat C/D/E visibility to 1 1/2 SM.



**MISSED APPROACH:**  
 Climbing left turn to 1800 direct HS NDB and hold.

AWOS-3PT <b>118.375</b>	GULFPORT APP CON* <b>124.6 354.1</b> (130°-309°) <b>127.5 254.25</b> (310°-129°)	STENNIS TOWER* <b>127.15</b> (CTAF) <b>0 229.4</b>	GND CON <b>121.725 229.4</b>	UNICOM <b>122.95</b>
----------------------------	--	---	---------------------------------	-------------------------



CATEGORY	A		B		C		D		E	
	S-18	600-3/4	577 (600-3/4)	600-1 1/4	577 (600-1 1/4)					
CIRCLING	600-1	577 (600-1)	600-1 5/8	820-2 1/2	820-2 3/4	577 (600-1 5/8)	797 (800-2 1/2)	797 (800-2 3/4)		

REIL Rwy 36	23	TDZE	23		
HIRL Rwy 18-36	1		36		
FAF to MAP 4.3 NM					
Knots	60	90	120	150	180
Min:Sec	4:18	2:52	2:09	1:43	1:26

SC-4, 14 MAY 2026 to 11 JUN 2026

SC-4, 14 MAY 2026 to 11 JUN 2026