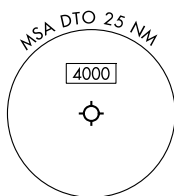
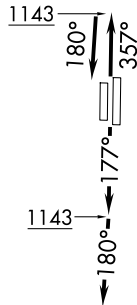


**TOP ALTITUDE:
ASSIGNED BY ATC**

RNAV 1 - DME/DME/IRU or GPS required.
RADAR required.

LONE STAR DEP CON
118.1 306.95
CLNC DEL
123.95
GND CON
123.95
DENTON TOWER *
119.95 (CTAF)

TAKEOFF MINIMUMS
Rwys 18L/R, 36L/R: Standard.



NOTE: ALIAN Transition: ATC assigned only.

(CONTINUED ON FOLLOWING PAGE)

NOTE: Chart not to scale.

BOTCH TWO DEPARTURE (RNAV)
(BOTCH2.BOTCH) 14MAY26

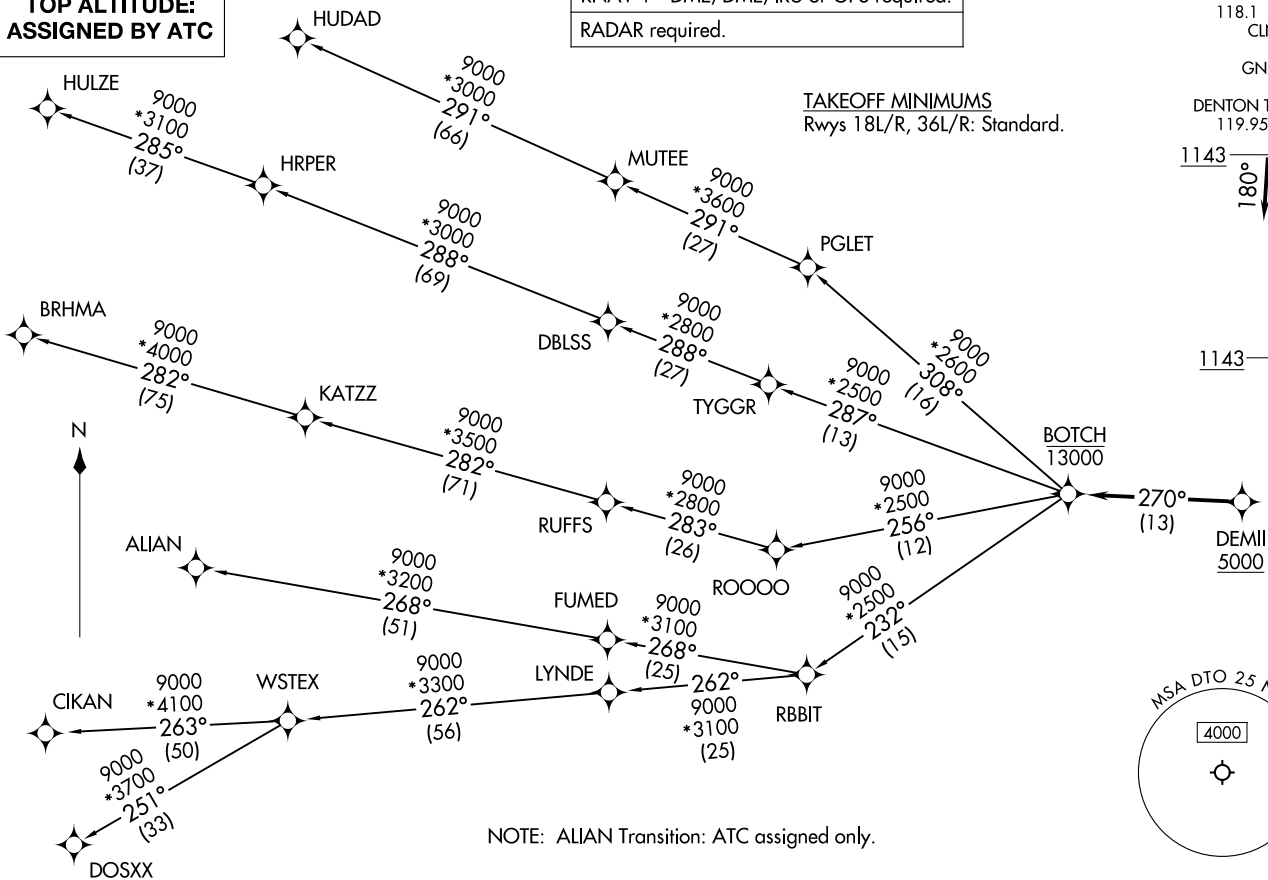
BOTCH TWO DEPARTURE (RNAV)

DENTON, TEXAS
DENTON ENTERPRISE (DITO)

(BOTCH2.BOTCH) 26134
BOTCH TWO DEPARTURE (RNAV)

AL-5866 (FAA)

DENTON ENTERPRISE (DITO)
DENTON, TEXAS



BOTCH TWO DEPARTURE (RNAV)



DEPARTURE ROUTE DESCRIPTION

TAKEOFF RUNWAYS 18L/R: Climb on heading 177° to 1143, then on heading 180° or as assigned by ATC, for vectors to cross DEMIII at or above 5000, thence. . .

TAKEOFF RUNWAYS 36L/R: Climb on heading 357° to 1143, then on heading 180° or as assigned by ATC, for vectors to cross DEMIII at or above 5000, thence. . .

. . . on track 270° to cross BOTCH at or below 13000, then on (transition). Maintain ATC assigned altitude, expect filed altitude 10 minutes after departure.

ALIAN TRANSITION (BOTCH2.ALIAN)

BRHMA TRANSITION (BOTCH2.BRHMA)

CIKAN TRANSITION (BOTCH2.CIKAN)

DOSXX TRANSITION (BOTCH2.DOSXX)

HUDAD TRANSITION (BOTCH2.HUDAD)

HULZE TRANSITION (BOTCH2.HULZE)

WSTEX TRANSITION (BOTCH2.WSTEX)

SC-2, 14 MAY 2026 to 11 JUN 2026

SC-2, 14 MAY 2026 to 11 JUN 2026