

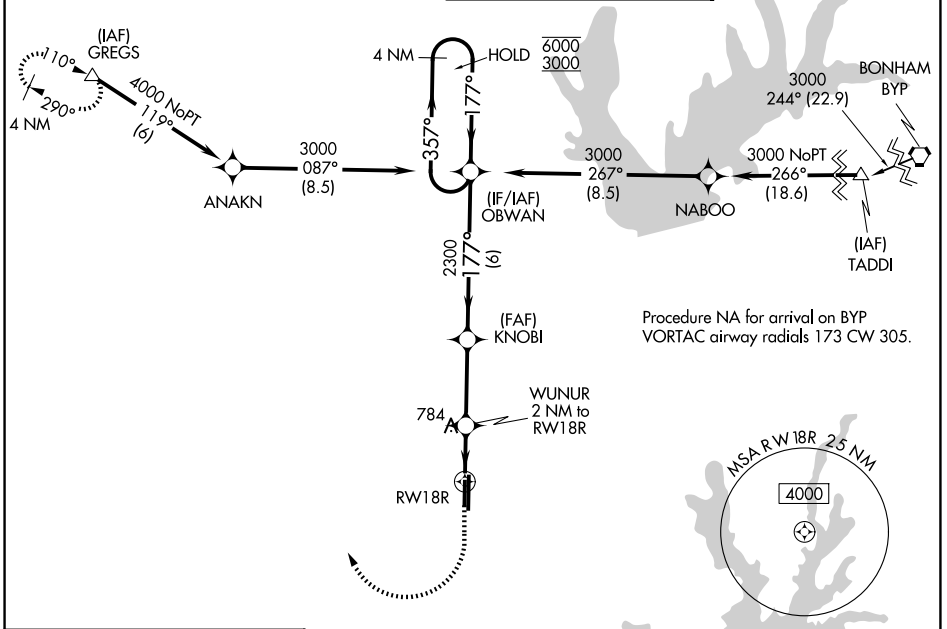
WAAS CH <b>97643</b> W18B	APP CRS <b>177°</b>	Rwy Ldg TDZE Apt Elev	18R <b>5003</b> <b>643</b> <b>643</b>	18L <b>6502</b> <b>642</b> <b>643</b>
---------------------------------	------------------------	-----------------------------	--	--

# RNAV (GPS) RWY 18R

DENTON ENTERPRISE (D.T.O)

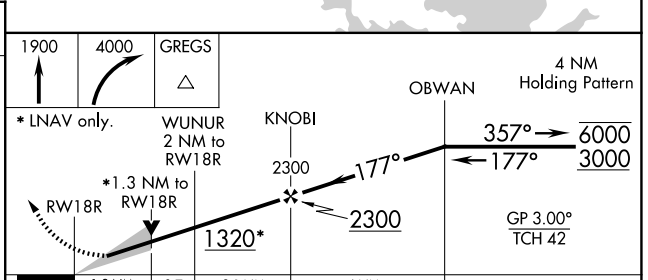
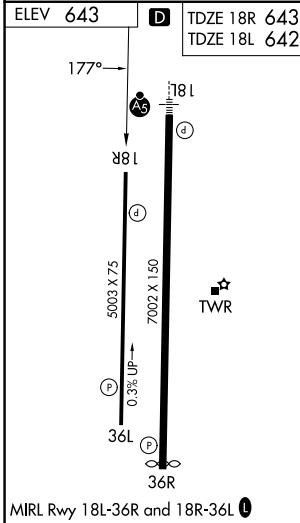
RNP APCH.		MISSED APPROACH: Climb to 1900 then climbing right turn to 4000 direct GREGS and hold.	
<p>▼ For uncompensated Baro-VNAV systems, LNAV/VNAV NA below -9°C or above 54°C.</p>			

ATIS <b>119.325</b>	LONE STAR APP CON <b>118.1 306.95</b>	DENTON TOWER ★ <b>119.95 (CTAF) 0</b>	GND CON <b>123.95</b>
------------------------	--	--	--------------------------



SC-2, 14 MAY 2026 to 11 JUN 2026

SC-2, 14 MAY 2026 to 11 JUN 2026



CATEGORY	A	B	C	D
LPV DA		893-3/4	250 (300-3/4)	
LNAV/VNAV DA		926-7/8	283 (300-7/8)	
LNAV MDA	1100-1	457 (500-1)	1100-1 3/8	457 (500-1 3/8)
SIDESTEP 18L	1100-1 1/4	458 (500-1 1/4)	1100-1 3/4	458 (500-2 1/4)
CIRCLING	1100-1 457 (500-1)	1260-1 617 (700-1)	1380-2 737 (800-2)	1380-2 1/4 737 (800-2 1/4)