

WAAS CH 56543 W36B	APP CRS 357°	Rwy Ldg 36L 5003 36R 6502 TDZE 641 639 Apt Elev 643 643
--	------------------------	---

RNAV (GPS) RWY 36L

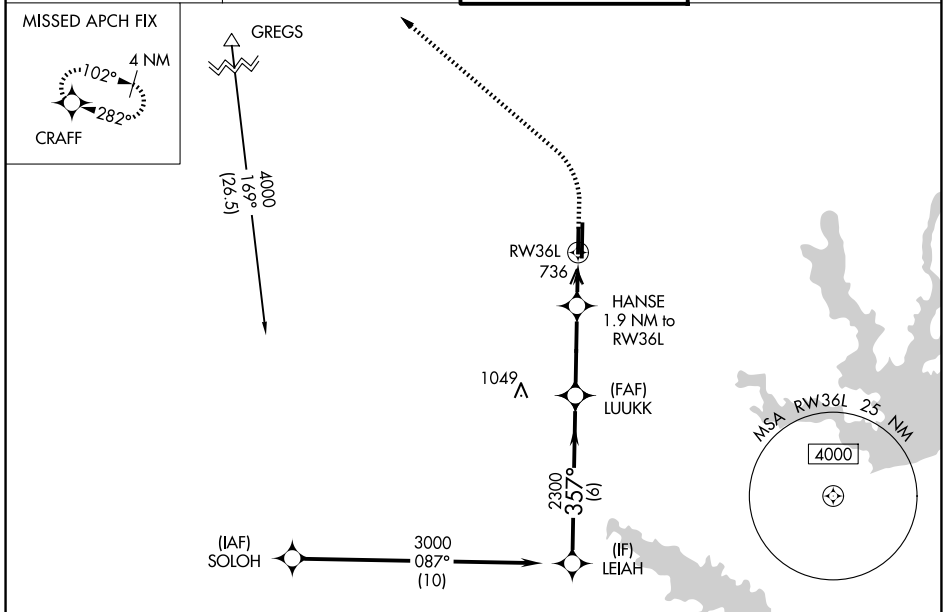
DENTON ENTERPRISE (DTON)

RNP APCH - GPS.

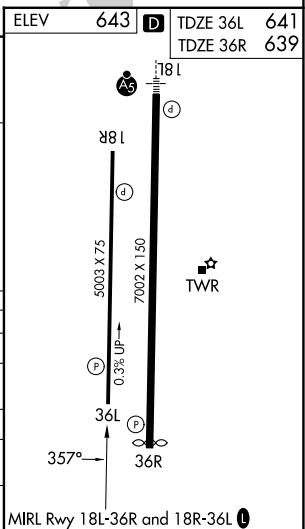
⚠ For uncompensated Baro-VNAV systems, LNAV/VNAV NA below -9°C or above 54°C. Rwy 36L helicopter visibility reduction below 3/4 SM NA.

MISSED APPROACH: Climb to 1500 then climbing left turn to 4000 direct CRAFT and hold, continue climb-in-hold to 4000.

ATIS 119.325	LONE STAR APP CON 118.1 306.95	DENTON TOWER ★ 119.95 (CTAF) 0	GND CON 123.95
------------------------	--	--	--------------------------



LEIAH	3000	357°	LUUKK	2300	HANSE	1.9 NM to RWY36L	1500	4000	CRAFT
GP 3.00°			2300		1280	1 NM to RWY36L			
TCH 42									
	6 NM		3.2 NM		0.9 NM	1 NM			
CATEGORY	A		B		C		D		
LPV DA			891-3/4		250 (300-3/4)				
LNAV/VNAV DA			992-1		351 (400-1)				
LNAV MDA			1000-1		359 (400-1)				
SIDESTEP 36R	1040-1		401 (400-1)		1040-1 1/2 401 (400-1 1/2)		1040-2 401 (400-2)		
CIRCLING	1100-1 457 (500-1)		1260-1 617 (700-1)		1380-2 737 (800-2)		1380-2 1/4 737 (800-2 1/4)		



SC-2, 14 MAY 2026 to 11 JUN 2026

SC-2, 14 MAY 2026 to 11 JUN 2026