

LOC/DME I-PVG 110.75 Chan 44 (Y)	APP CRS 102°	Rwy Ldg TDZE Apt Elev	5350 28 28
--	------------------------	-----------------------------	---------------------------------------

ILS or LOC RWY 10

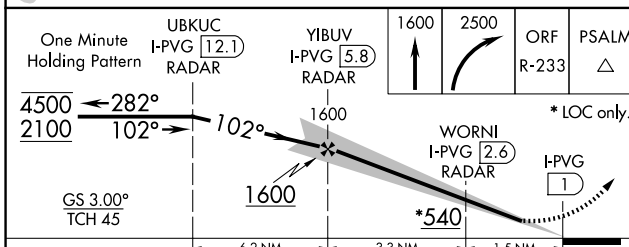
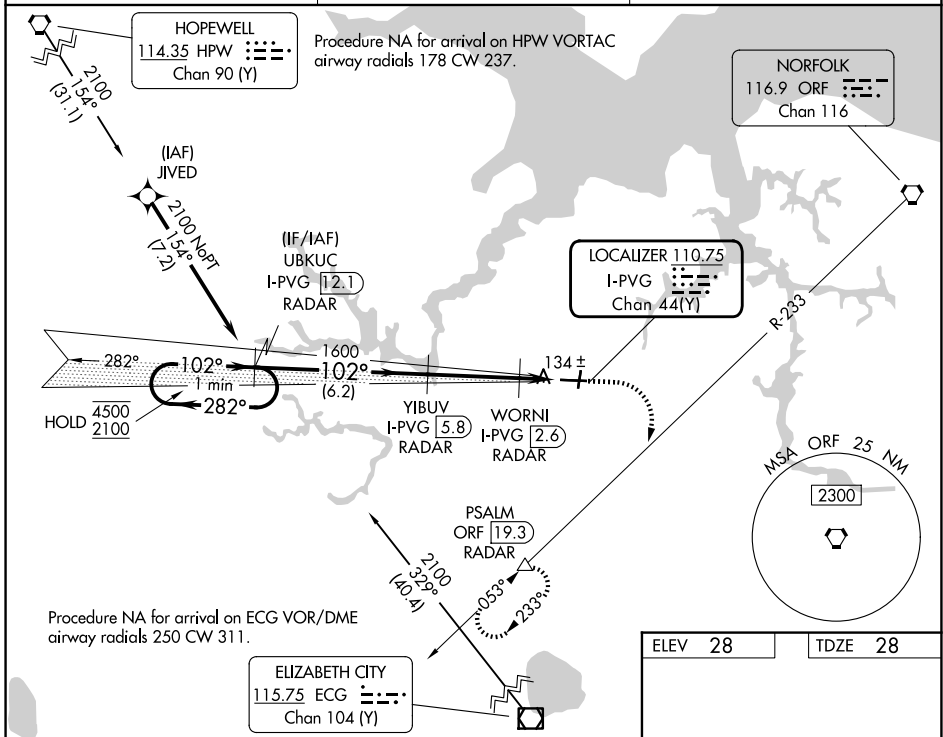
HAMPTON ROADS EXEC (PVG)

RNAV 1-GPS or RADAR required for procedure entry. DME or RADAR required.

▼ Circling NA to Rwy's 2 and 20. Circling NA for Cat C north of Rwy's 10-28.
▲ NA Autopilot coupled approach NA below 800.

MISSED APPROACH: Climb to 1600 then climbing right turn to 2500 on ORF VORTAC R-233 to PSALM/ORF 19.3 DME/RADAR and hold.

AWOS-3PT 118.375	NORFOLK APP CON 118.9 353.7	UNICOM 122.725 (CTAF) 0
----------------------------	---------------------------------------	--



ELEV 28	TDZE 28
---------	---------

HIRL Rwy 10-28	1
REIL Rwy's 10 and 28	1
MIRL Rwy's 2-20	1
FAF to MAP 4.8 NM	
Knots	60 90 120 150 180
Min:Sec	4:48 3:12 2:24 1:55 1:36

CATEGORY	A	B	C	D
S-ILS 10	228- ³ / ₄	200 (200- ³ / ₄)		NA
S-LOC 10	400-1	372 (400-1)		NA
CIRCLING	500-1	472 (500-1)	780-2 ¹ / ₄ 752 (800-2 ¹ / ₄)	NA

NE-3, 14 MAY 2026 to 11 JUN 2026

NE-3, 14 MAY 2026 to 11 JUN 2026