

APP CRS	Rwy Ldg	3881
262°	TDZE	53
	Apt Elev	53

RNAV (GPS) RWY 26

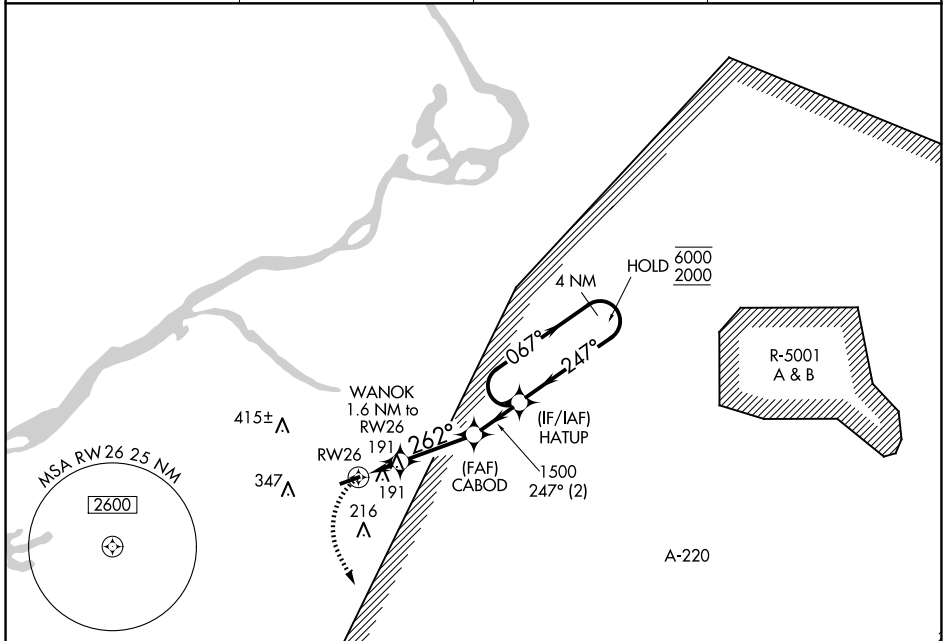
SOUTH JERSEY RGNL (VAY)

RNP APCH.

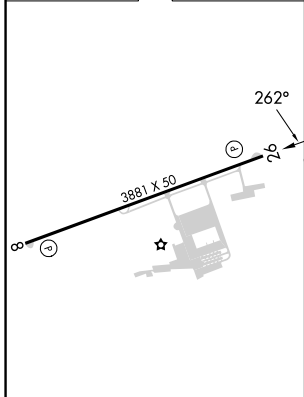
Rwy 26 helicopter visibility reduction below 1 SM NA. Procedure NA at night.

MISSED APPROACH:
Climbing left turn to 2000
direct INNEZ and hold.

ASOS	MC GUIRE APP CON	UNICOM	123.3
119.325	126.475 363.8	122.8 (CTAF)	



ELEV 53	TDZE 53
---------	---------



	2000 INNEZ		HATUP	4 NM Holding Pattern
	△		067° → 6000	← 247° 2000
	WANOK	CABOD		
	1.6 NM to RW26	1500		
	600	3.00° TCH 40		
	→ 1.6 NM	→ 2.8 NM	→ 2 NM	
CATEGORY	A	B	C	D
LNAV MDA	480-1	427 (500-1)		NA
CIRCLING	520-1	540-1		NA
	467 (500-1)	487 (500-1)		

MIRL Rwy 8-26
REIL Rwy 8 and 26

NE-2, 14 MAY 2026 to 11 JUN 2026

NE-2, 14 MAY 2026 to 11 JUN 2026