

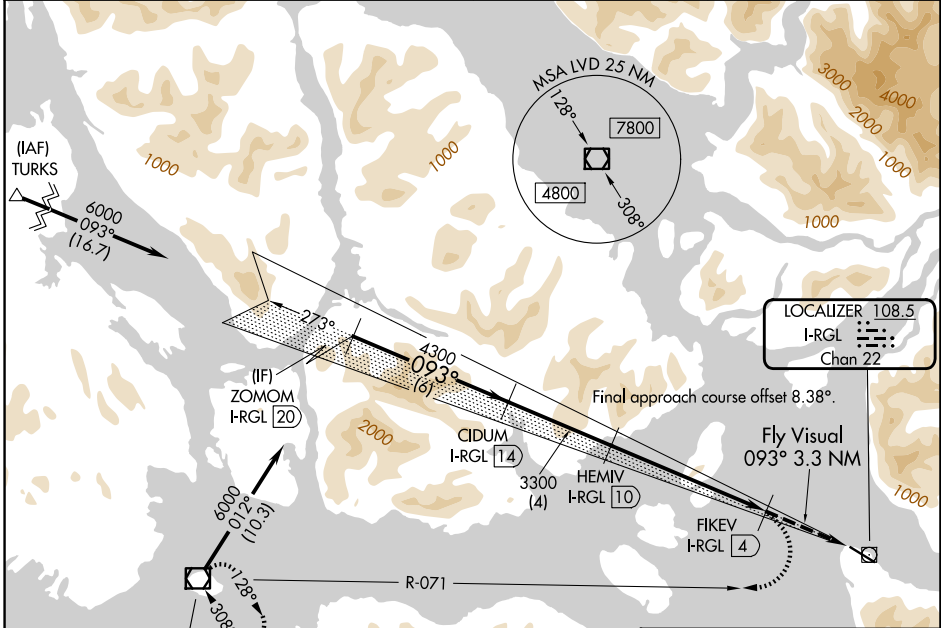
LOC/DME I-RGL 108.5 Chan 22	APP CRS 093°	Rwy Ldg TDZE Apt Elev 44	N/A N/A 44
---	------------------------	---------------------------------------	---------------------------------------

LDA-D
WRANGELL (WRG) (PAWG)

⚠ Circling NA north of Rwy 10-28. DME Required. Any go-around commenced after passing the MAP will not provide standard obstacle clearance.
❄ -4°C

MISSED APPROACH: Climbing right turn to 6000 on LVD VOR/DME R-071 to LVD VOR/DME and hold.

AWOS-3P 128.5	ANCHORAGE CENTER 118.0	SITKA RADIO 122.45	CTAF 122.6
-------------------------	----------------------------------	------------------------------	----------------------



AK, 14 MAY 2026 to 09 JUL 2026

AK, 14 MAY 2026 to 09 JUL 2026



ZOMOM I-RGL (20)	CIDUM I-RGL (14)	HEMIV I-RGL (10)	FIKEV I-RGL (4)	Fly Visual 093° 3.3 NM
6000	4300	3300		
6 NM	4 NM	6 NM		

CATEGORY	A	B	C	D
CIRCLING		NA		3260-3 3216 (3300-3)

