

WAAS CH 86524 W27A	APP CRS 268°	Rwy Ldg 5000 TDZE 2925 Apt Elev 2933
--	------------------------	---

RNAV (GPS) RWY 27

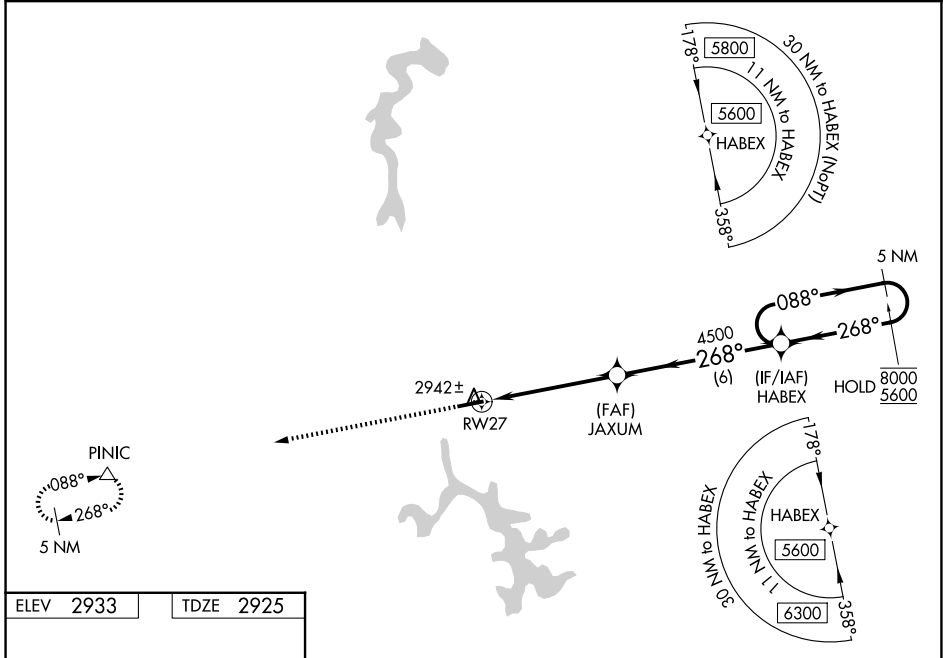
GARRETT COUNTY (2G4)

RNP APCH - GPS.

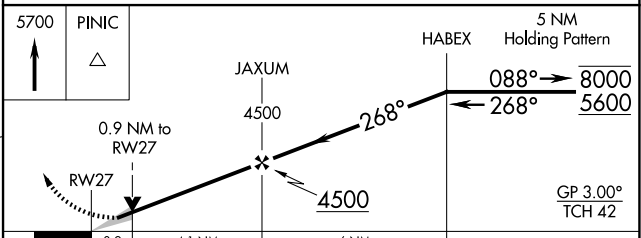
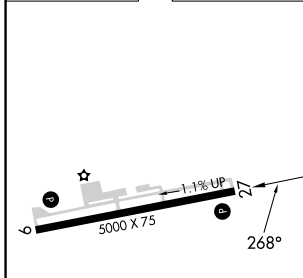
⚠ For uncompensated Baro-VNAV systems, LNAV/VNAV NA below -20°C or above 54°C. Baro-VNAV and VDP NA when using MGW altimeter setting. When local altimeter setting not received, use MGW altimeter setting and increase LPV DA to 3425 feet and all visibilities $\frac{3}{8}$ SM. Increase LNAV/VNAV DA to 3475 feet and all visibilities $\frac{3}{8}$ SM; increase all MDAs 300 feet and LNAV visibility Cat C $\frac{3}{8}$ SM, and Circling visibility Cat C 1 SM.

MISSED APPROACH:
Climb 5700 direct
PINIC and hold.

AWOS-3 120.125	CLARKSBURG APP CON ★ 119.425 284.65	UNICOM 123.0 (CTAF) ①
--------------------------	---	---------------------------------



ELEV 2933	TDZE 2925
-----------	-----------



	A	B	C	D
LPV DA	3125-1	200 (200-1)		NA
LNAV/VNAV DA	3175-1	250 (300-1)		NA
LNAV MDA	3200-1	275 (300-1)		NA
CIRCLING	3380-1 447 (500-1)	3400-1 467 (500-1)	3500-1½ 567 (600-1½)	NA

REIL Rwy 9 and 27 ①
MIRL Rwy 9-27 ①

NE-3, 14 MAY 2026 to 11 JUN 2026

NE-3, 14 MAY 2026 to 11 JUN 2026