

WAAS CH 77606 W04A	APP CRS 038°	Rwy Ldg TDZE 316 Apt Elev 316
--	------------------------	---

RNAV (GPS) RWY 4

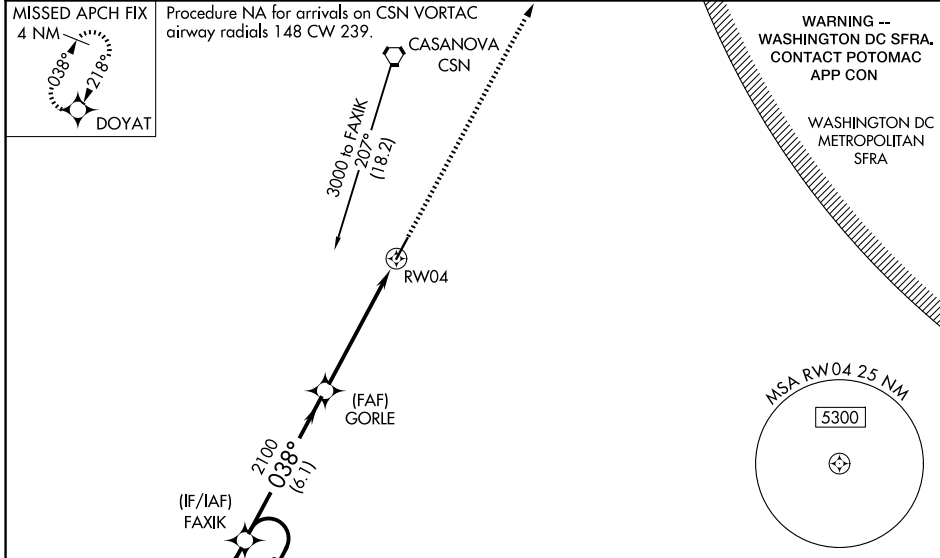
CULPEPER RGNL (CJR)

RNP APCH - GPS.

⚠ Rwy 4 helicopter visibility reduction below 3/4 SM NA. For uncompensated Baro-VNAV systems, LNAV/VNAV NA below -15°C or above 48°C. Baro-VNAV and VDP NA when using IAD altimeter setting. When local altimeter setting not received, use IAD altimeter setting and increase LPV DA to 683 feet; increase LNAV/VNAV DA to 906 feet; increase all MDAs 80 feet and visibility Cats C/D 1/4 SM.

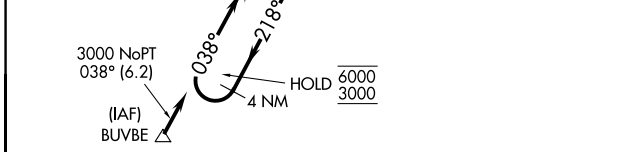
MISSED APPROACH:
Climb to 3000 direct DOYAT and hold.

AWOS-3 119.325	POTOMAC APP CON 128.525 306.925	CLNC DEL 121.6	UNICOM 123.075 (CTAF) 1
--------------------------	---	--------------------------	-----------------------------------

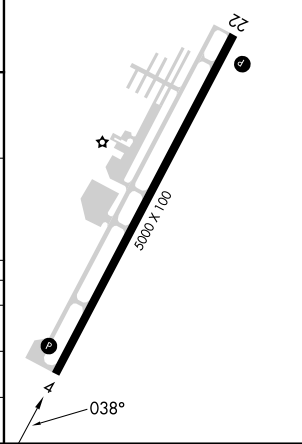


WARNING --
WASHINGTON DC SFRA.
CONTACT POTOMAC APP CON

WASHINGTON DC METROPOLITAN SFRA



ELEV 316	TDZE 316
REIL Rws 4 and 22 1	
MIRL Rwy 4-22 1	



4 NM Holding Pattern	FAXIK	3000	DOYAT
6000 ← 218°	→ 038°		
GP 3.00°	TCH 40	2100	GORLE
		6.1 NM	4 NM
			1.5 NM
			1.5 NM to RWY04

CATEGORY	A	B	C	D
LPV DA		610-1	294 (300-1)	
LNAV/VNAV DA		833-13/4	517 (600-13/4)	
LNAV MDA	820-1	504 (600-1)	820-1 1/2	504 (600-1 1/2)

NE-3, 14 MAY 2026 to 11 JUN 2026

NE-3, 14 MAY 2026 to 11 JUN 2026