

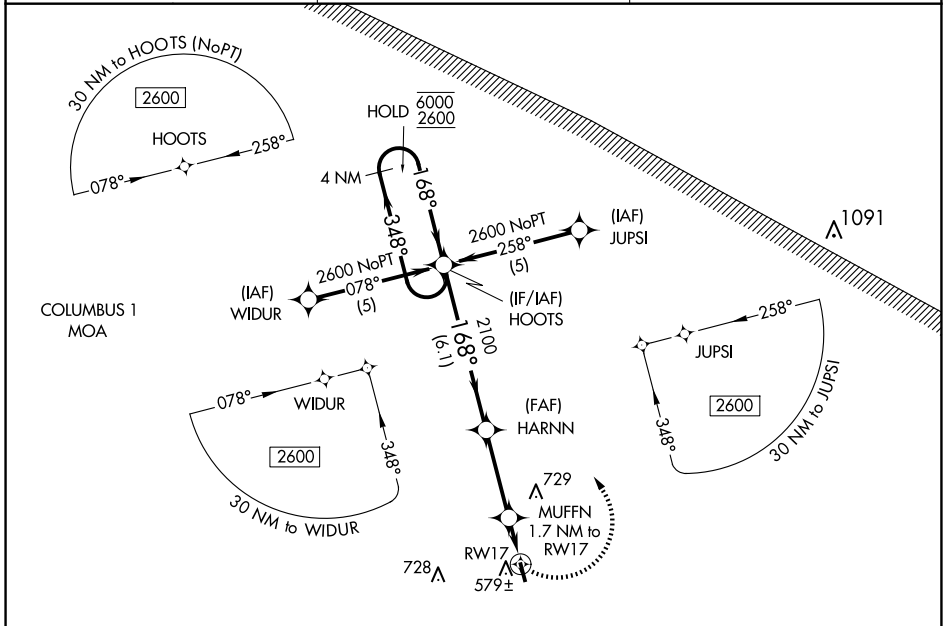
APP CRS	Rwy Idg	3613
168°	TDZE	463
	Apt Elev	463

RNAV (GPS) RWY 17

LAMAR COUNTY (M55)

RNP APCH.	MISSED APPROACH: Climbing left turn to 2600 direct HOOTs and hold.
<p>▼ Rwy 17 helicopter visibility reduction below 1 SM NA. Use Columbus AFB altimeter setting. Procedure NA at night.</p> <p>▲ NA</p>	

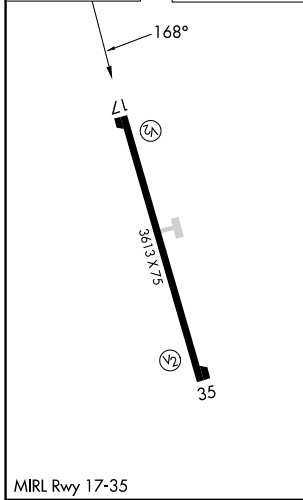
KCBM ATIS★ 115.2 273.5	COLUMBUS APP CON★ 126.075 239.25	CTAF 122.9
----------------------------------	--	----------------------



SE-4, 14 MAY 2026 to 11 JUN 2026

SE-4, 14 MAY 2026 to 11 JUN 2026

ELEV 463	TDZE 463
-----------------	-----------------



MIRL Rwy 17-35
VERNON, ALABAMA
Orig-B 14JUL22

4 NM Holding Pattern				2600	HOOTs
CATEGORY	A	B	C	D	
LNAV MDA	960-1	497 (500-1)	960-1 ³ / ₈ 497 (500-1 ³ / ₈)	960-1 ¹ / ₂ 497 (500-1 ¹ / ₂)	
CIRCLING	1100-1	637 (700-1)	1180-2 717 (800-2)	1180-2 ¹ / ₄ 717 (800-2 ¹ / ₄)	

33°51'N-88°07'W

RNAV (GPS) RWY 17

LAMAR COUNTY (M55)