

WAAS CH <b>61199</b> <b>W18A</b>	APP CRS <b>181°</b>	Rwy Ldg TDZE Apt Elev	<b>6000</b> <b>402</b> <b>402</b>
--	------------------------	-----------------------------	---

# RNAV (GPS) RWY 18

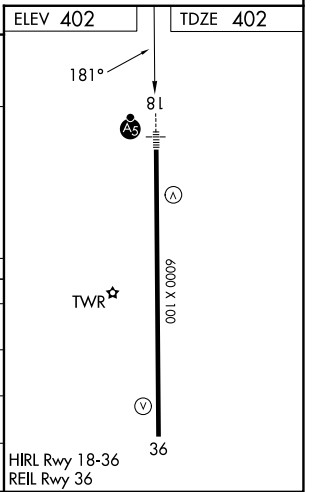
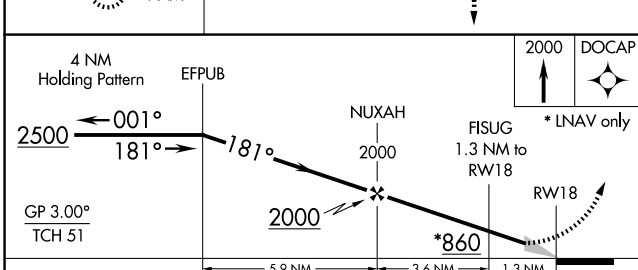
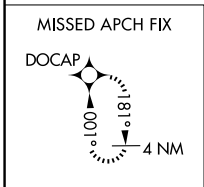
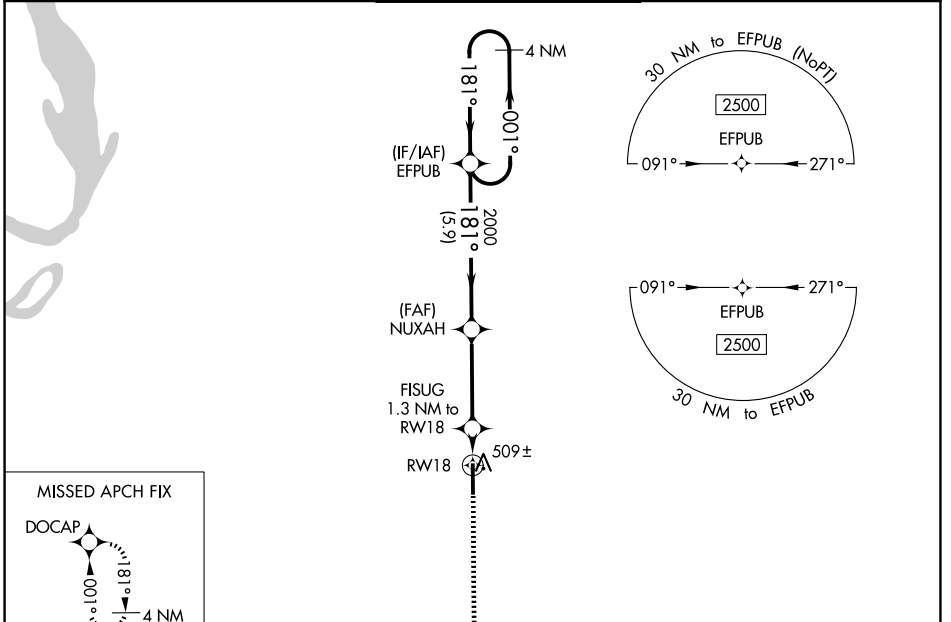
OLIVE BRANCH/TAYLOR FLD (OLV)

**⚠** For uncompensated Baro-VNAV systems, LNAV/VNAV NA below -1.5°C (5°F) or above 54°C (130°F). DME/DME RNP-0.3 NA. When local altimeter setting not received, use Frederick W Smith Intl altimeter setting and increase all DA 32 feet and all MDA 40 feet; increase LNAV/VNAV all Cats visibility 1/8 mile and Circling Cats C and D visibility 1/4 mile.

**MALS R**  
A5

**MISSED APPROACH:**  
Climb to 2000 direct  
DOCAP and hold.

ATIS <b>119,925</b>	MEMPHIS APP CON <b>125.8 338.3</b>	<b>OLIVE BRANCH TOWER ★</b> <b>125.275 (CTAF) 0</b>	GND CON <b>121.2</b>	UNICOM <b>122.95</b>
------------------------	---------------------------------------	--	-------------------------	-------------------------



CATEGORY	A	B	C	D
LPV DA		602-1/2	200 (200-1/2)	
LNAV/VNAV DA		691-1/2	289 (300-1/2)	
LNAV MDA	760-1/2	358 (400-1/2)	760-5/8	358 (400-5/8)
CIRCLING	1060-1	658 (700-1)	1060-1 3/4 658 (700-1 3/4)	1200-2 1/2 798 (800-2 1/2)

SC-4, 14 MAY 2026 to 11 JUN 2026

SC-4, 14 MAY 2026 to 11 JUN 2026