

LOC/DME I-LBJ 110.7 Chan 44	APP CRS 047°	Rwy Ldg TDZE Apt Elev	5000 1642 1642
---	------------------------	-----------------------------	---

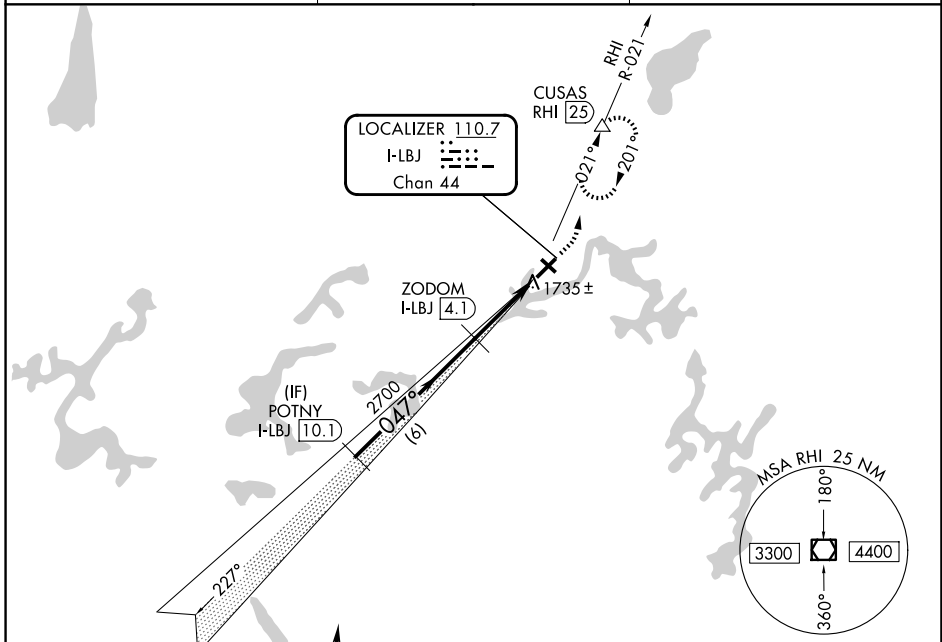
LOC/DME RWY 4

EAGLE RIVER UNION (EGV)

NA Rwy 4 helicopter visibility reduction below 3/4 SM NA. When local altimeter setting not received, use Minocqua-Woodruff altimeter setting and increase all MDAs 60 feet and Circling Cat C/D visibility 1/4 SM. Circling Rwy 13, 31 NA at night.

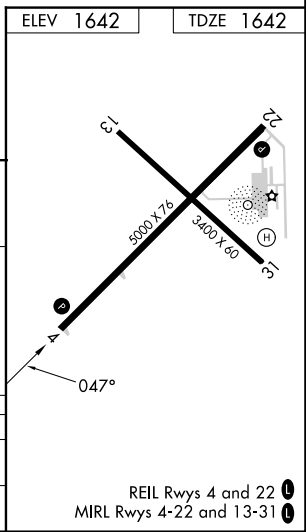
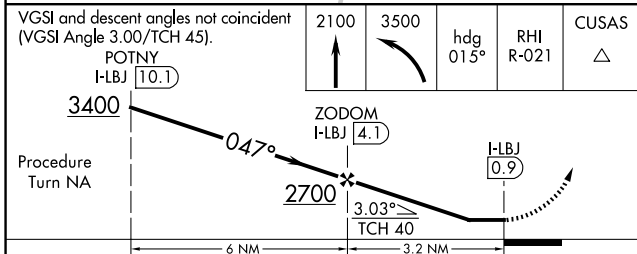
MISSED APPROACH: Climb to 2100 then climbing left turn to 3500 on heading 015° and RHI R-021 to CUSAS/RHI 25 DME and hold.

AWOS-3 118.325	MINNEAPOLIS CENTER 133.65 281.5	UNICOM 122.8 (CTAF) 1
--------------------------	---	--



Procedure NA for arrivals at RHI VOR/DME via V191 southeast bound, V63 southbound.

IAF RHINELANDER 115.05 RHI Chan 97(Y)



CATEGORY	A	B	C	D
S-4	2000-1 358 (400-1)			
CIRCLING	2120-1 478 (500-1)		2260-1 3/4 618 (700-1 3/4)	2340-2 1/4 698 (700-2 1/4)

EC-3, 14 MAY 2026 to 11 JUN 2026

EC-3, 14 MAY 2026 to 11 JUN 2026