

WAAS CH 99304 W22A	APP CRS 227°	Rwy Ldg TDZE Apt Elev	5000 1642 1642
--	------------------------	-----------------------------	---

RNAV (GPS) RWY 22

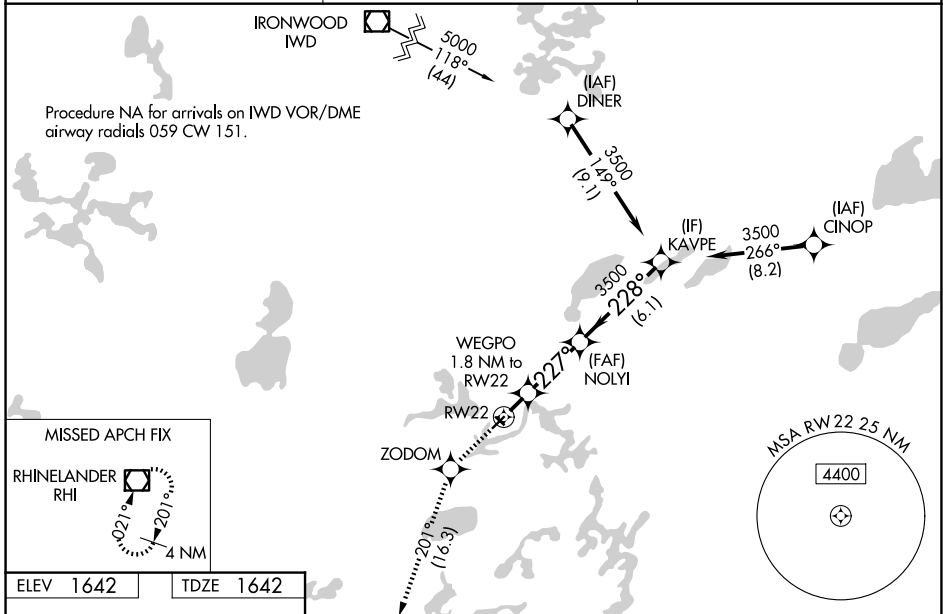
EAGLE RIVER UNION (EGV)

RNP APCH - GPS

▼ Baro-VNAV and VDP NA when using ARV altimeter setting. For uncompensated Baro-VNAV systems, LNAV/VNAV NA below -18°C or above 54°C. Rwy 22 helicopter visibility reduction below ¼ SM NA. Circling Rwy 13 and 31 NA at night. When local altimeter setting not received, use ARV altimeter setting and increase LPV DA to 2013 feet; increase LNAV/VNAV DA to 2085 feet and all visibilities ¼ SM. Increase all MDAs 60 feet and LNAV visibility Cat C/D ¼ SM, and Circling visibility Cat C/D ¼ SM.

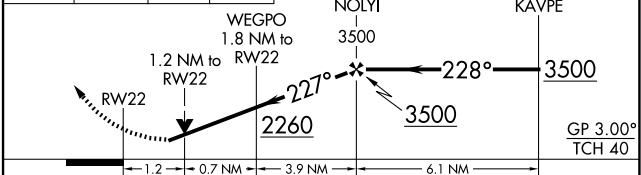
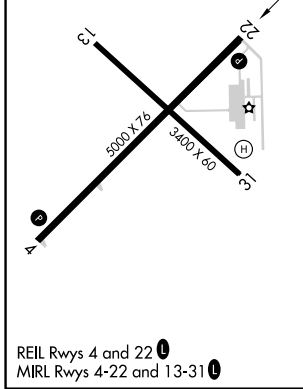
⚠ MISSED APPROACH: Climb to 3500 direct ZODOM and on track 201° to RHI VOR/DME and hold.

AWOS-3 118.325	MINNEAPOLIS CENTER 133.65 281.5	UNICOM 122.8 (CTAF) 0
--------------------------	---	---------------------------------



ELEV 1642	TDZE 1642
-----------	-----------

3500	ZODOM	RHI	VGSI and RNAV glidepath not coincident (VGSI Angle 3.00°/TCH 34).
↑	✧	⊠	
	tr 201°		



CATEGORY	A	B	C	D
LPV DA		1966-1	324 (400-1)	
LNAV/VNAV DA		2038-1½	396 (400-1½)	
LNAV MDA	2040-1	398 (400-1)	2040-1½	398 (400-1½)
CIRCLING	2120-1	478 (500-1)	2260-1¾ 618 (700-1¾)	2340-2¼ 698 (700-2¼)

EC-3, 14 MAY 2026 to 11 JUN 2026

EC-3, 14 MAY 2026 to 11 JUN 2026