

WAAS CH 82002 W04A	APP CRS 047°	Rwy Ldg TDZE 1642 Apt Elev 1642
--	------------------------	---

RNAV (GPS) RWY 4

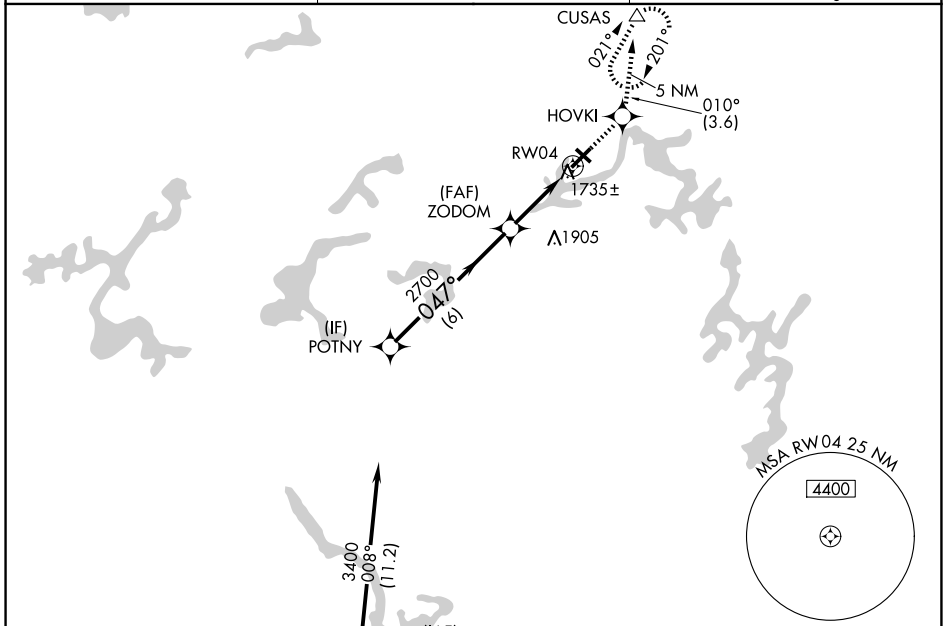
EAGLE RIVER UNION (EGV)

RNP APCH - GPS

Baro-VNAV NA when using Minocqua-Woodruff altimeter setting. For uncompensated Baro-VNAV systems, LNAV/VNAV NA below -18°C or above 44°C. Rwy 4 helicopter visibility reduction below 3/4 SM NA. When local altimeter setting not received, use Minocqua-Woodruff altimeter setting and increase LPV DA to 2017, LNAV/VNAV DA to 2052, and all MDAs 60 feet. Increase Circling Cat C/D visibility 1/4 SM. Circling Rwy 13, 31 NA at night.

MISSED APPROACH: Climb to 3500 direct HOVKI and on track 010° to CUSAS and hold.

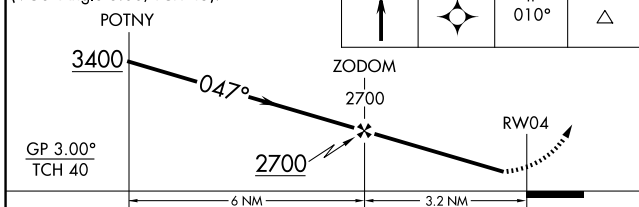
AWOS-3 118.325	MINNEAPOLIS CENTER 133.65 281.5	UNICOM 122.8 (CTAF)
--------------------------	---	-------------------------------



Procedure NA for arrivals at RHI VOR/DME on airway radials 331 CW 021.

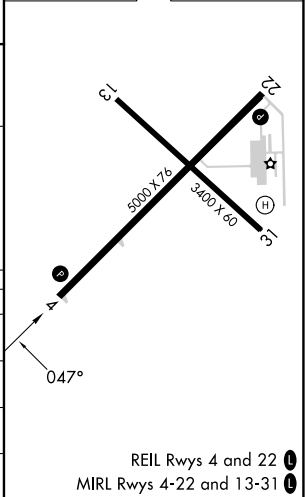


VGSI and RNAV glidepath not coincident (VGSI Angle 3.00/TCH 45).



ELEV 1642	TDZE 1642
-----------	-----------

CATEGORY	A	B	C	D
LPV DA		1970-1¼	328 (400-1¼)	
LNAV/VNAV DA		2005-1¼	363 (400-1¼)	
LNAV MDA	2080-1	438 (500-1)	2080-1¼ 438 (500-1¼)	2080-1½ 438 (500-1½)
CIRCLING	2120-1¼	478 (500-1¼)	2260-1¾ 618 (700-1¾)	2340-2¼ 698 (700-2¼)



REIL Rws 4 and 22
MIRL Rws 4-22 and 13-31

EC-3, 14 MAY 2026 to 11 JUN 2026

EC-3, 14 MAY 2026 to 11 JUN 2026