

VOR/DME RHI	APP CRS	Rwy Ldg	5000
115.05	021°	TDZE	1642
Chan 97(Y)		Apt Elev	1642

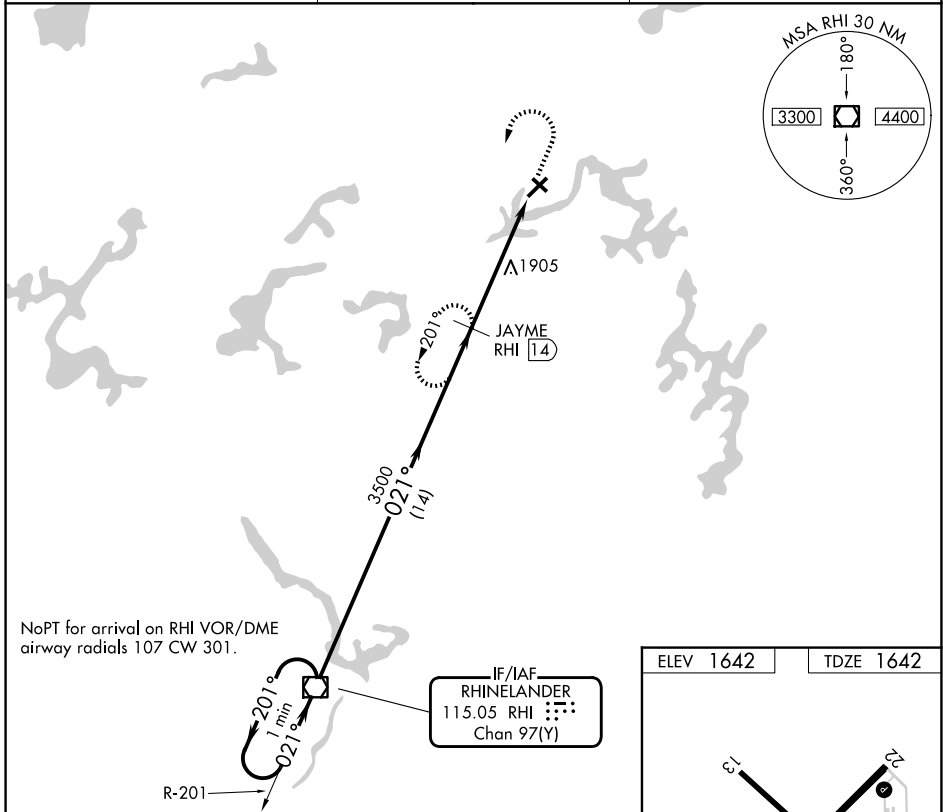
# VOR/DME RWY 4

EAGLE RIVER UNION (EGV)

**⚠** Circling Rwy 13, 31 NA at night. Rwy 4 helicopter visibility reduction below ½ SM NA. When local altimeter setting not received, use ARV altimeter setting and increase all MDAs 60 feet and S-04 visibility Cat C/D ½ SM, and Circling visibility Cat C/D ¼ SM.

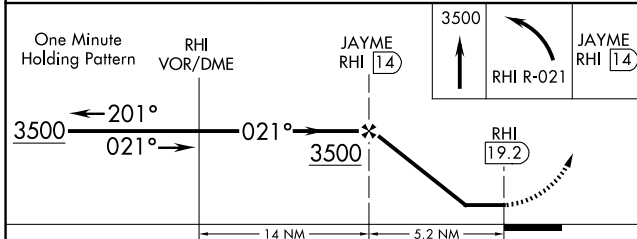
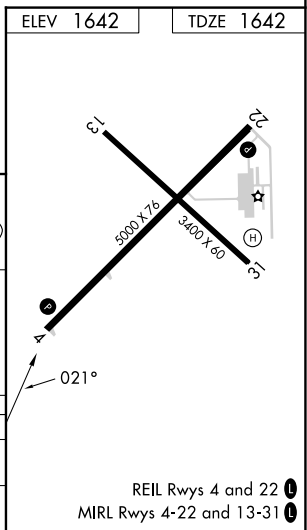
**MISSED APPROACH:** Climb to 3500 then left turn on RHI VOR/DME R-021 to JAYME/14 DME and hold.

AWOS-3 <b>118.325</b>	MINNEAPOLIS CENTER <b>133.65 281.5</b>	UNICOM <b>122.8 (CTAF)</b>
--------------------------	-------------------------------------------	-------------------------------



NoPT for arrival on RHI VOR/DME airway radials 107 CW 301.

**IF/IAF**  
**RHEINELANDER**  
115.05 RHI  
Chan 97(Y)



CATEGORY	A	B	C	D	E
S-4	2260-1	618 (700-1)	2260-1¾ 618 (700-1¾)	2260-2 618 (700-2)	NA
CIRCLING	2260-1	618 (700-1)	2260-1¾ 618 (700-1¾)	2340-2¼ 698 (700-2¼)	NA

EC-3, 14 MAY 2026 to 11 JUN 2026

EC-3, 14 MAY 2026 to 11 JUN 2026