

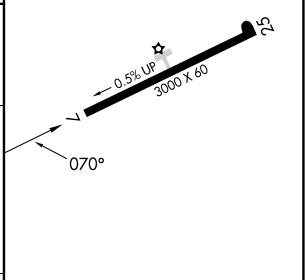
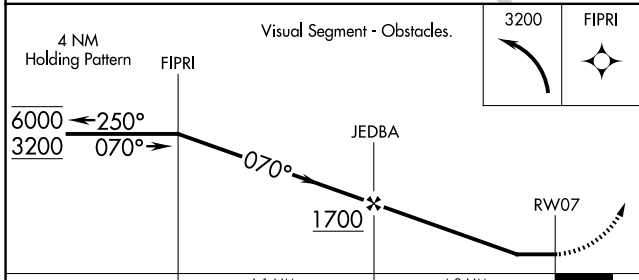
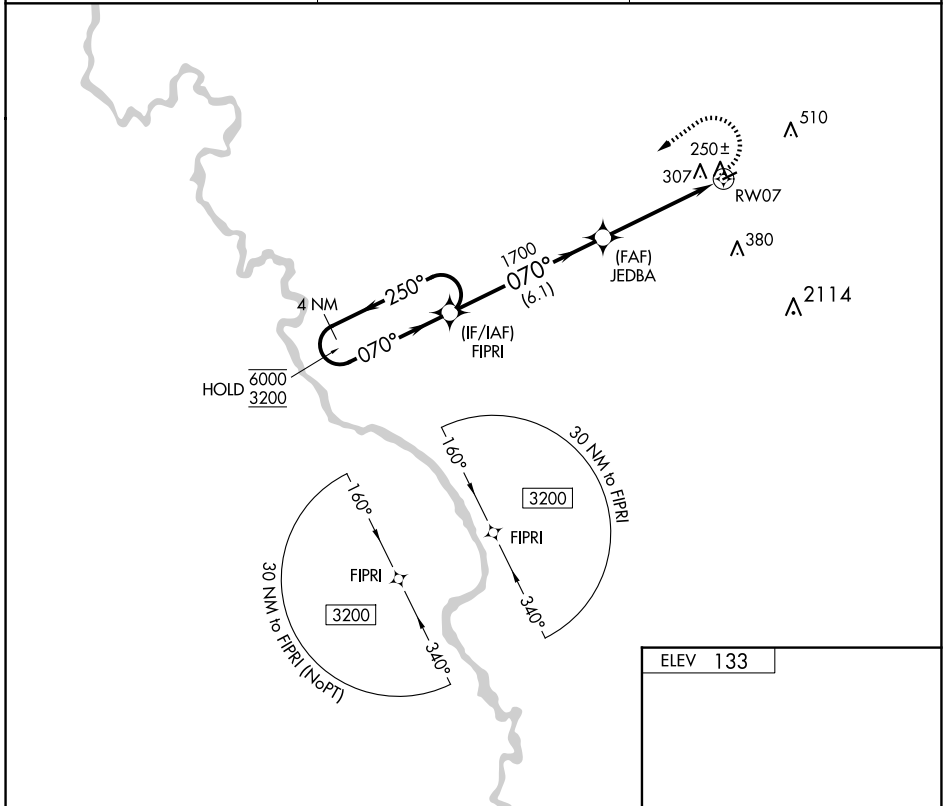
APP CRS	Rwy Ldg	N/A
<b>070°</b>	TDZE	N/A
	Apt Elev	<b>133</b>

# RNAV (GPS)-A

DILLON COUNTY (DLC)

RNP APCH - GPS.		MISSED APPROACH: Climbing left turn to 3200 direct FIPRI and hold, continue climb-in-hold to 3200.
<b>▽</b>	Rwy 7, 25 helicopter visibility reduction below 1 SM NA. Procedure NA at night.	
<b>△</b> NA	Use FLO altimeter setting; when not received, procedure NA.	

FLO ASOS <b>123.625</b>	FLORENCE APP CON ★ <b>118.6 341.7</b>	CTAF <b>122.9</b>
----------------------------	--	----------------------



CATEGORY	A	B	C	D
CIRCLING	720-1	587 (600-1)	920-2¼ 787 (800-2¼)	NA

ELEV	133
------	-----

MIRL Rwy 7-25

SE-2, 14 MAY 2026 to 11 JUN 2026

SE-2, 14 MAY 2026 to 11 JUN 2026