

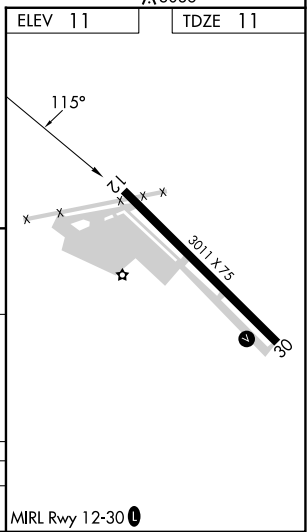
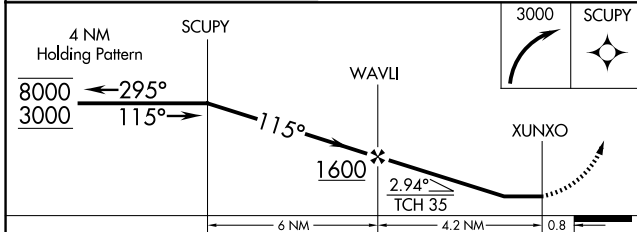
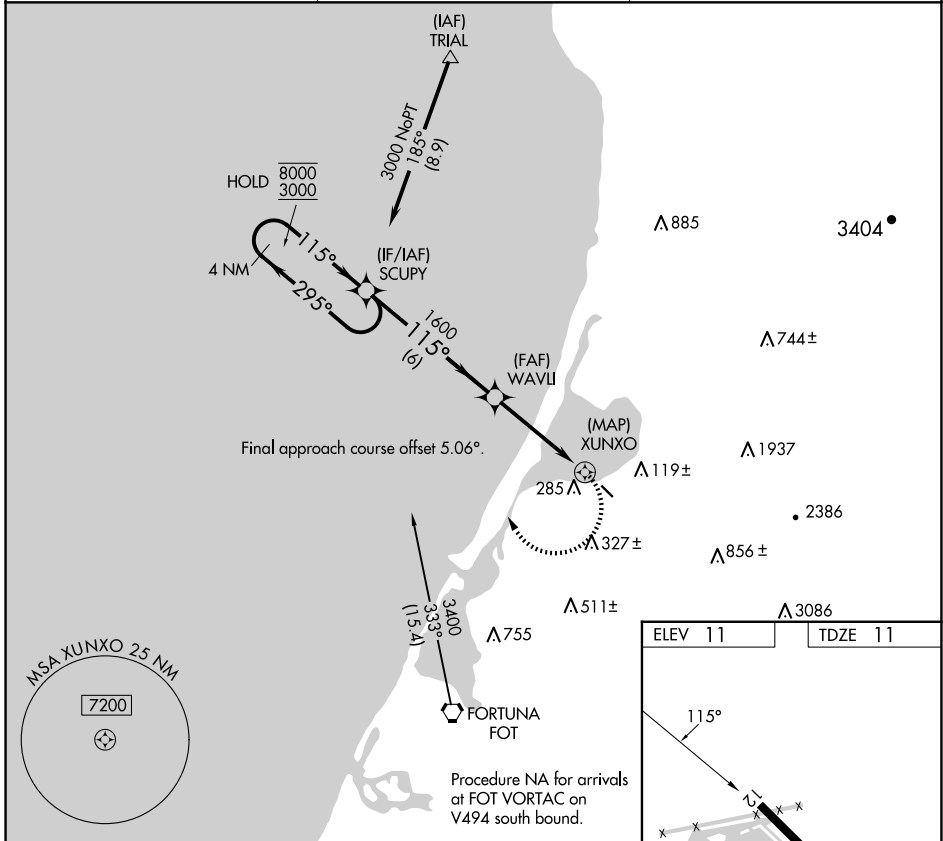
APP CRS	Rwy Ldg	<b>3011</b>
<b>115°</b>	TDZE	<b>11</b>
	Apt Elev	<b>11</b>

# RNAV (GPS) RWY 12

MURRAY FLD (EKA)

RNP APCH.	Procedure NA at night. Rwy 12 helicopter visibility reduction below 1 SM NA. Use Arcata altimeter setting, when not received use Crescent City altimeter setting and increase all MDA 100 feet and increase LNAV Cat C visibility ¼ SM.	MISSED APPROACH: Climbing right turn to 3000 direct SCUPY and hold.
Procedure NA at night. Rwy 12 helicopter visibility reduction below 1 SM NA. Use Arcata altimeter setting, when not received use Crescent City altimeter setting and increase all MDA 100 feet and increase LNAV Cat C visibility ¼ SM.		

ACV ASOS <b>118.525</b>	SEATTLE CENTER <b>124.85 306.3</b>	UNICOM <b>122.7 (CTAF) 0</b>
----------------------------	---------------------------------------	---------------------------------



CATEGORY	A	B	C	D
LNAV MDA	760-1 749 (800-1)	760-1¼ 749 (800-1¼)	760-2¼ 749 (800-2¼)	NA

SW-2, 14 MAY 2026 to 11 JUN 2026

SW-2, 14 MAY 2026 to 11 JUN 2026