

LINDZ ONE DEPARTURE
(LINDZ1.LINDZ) 16MAY24

ASPEN-PITKIN COUNTY/SARDY FLD (ASE)
ASPEN, COLORADO

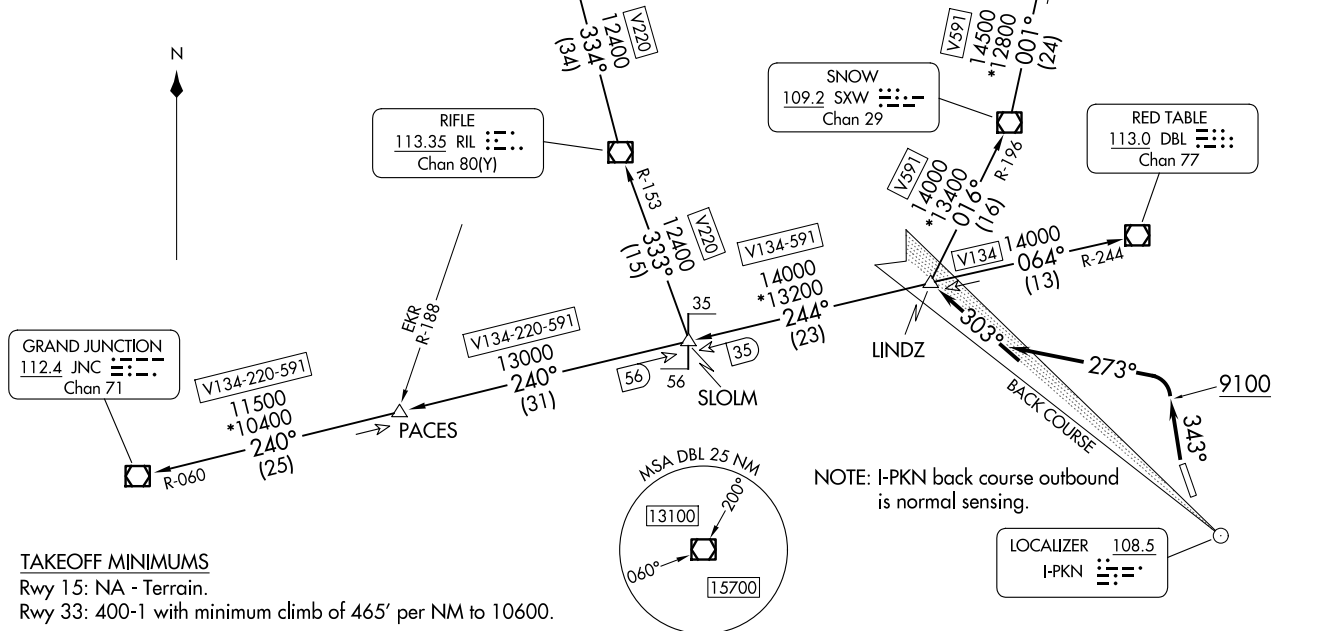
ASPEN DEP CON *
123.8 288.3
DENVER CENTER
119.85 363.15
ATIS
120.4
CLINC DEL
125.475
GND CON
121.9
ASPEN TOWER *
118.85 (CTAF) 288.3

**TOP ALTITUDE:
16000**

(LINDZ1.LINDZ) 26134
LINDZ ONE DEPARTURE

AL-58889 (FAA)

ASPEN-PITKIN COUNTY/SARDY FLD (ASE)
ASPEN, COLORADO



GRAND JUNCTION
112.4 JNC
Chan 71

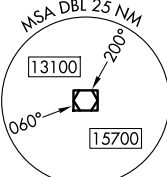
MEEKER
115.2 EKR
Chan 99

RIFLE
113.35 RIL
Chan 80(Y)

SNOW
109.2 SXW
Chan 29

RED TABLE
113.0 DBL
Chan 77

KREMMLING
113.8 RLG
Chan 85



NOTE: I-PKN back course outbound is normal sensing.

LOCALIZER 108.5
I-PKN

TAKEOFF MINIMUMS
Rwy 15: NA - Terrain.
Rwy 33: 400-1 with minimum climb of 465' per NM to 10600.

NOTE: Chart not to scale.

(CONTINUED ON FOLLOWING PAGE)



DEPARTURE ROUTE DESCRIPTION

TAKEOFF RUNWAY 33: Climb heading 343° to 9100, then climbing left turn to 16000 on heading 273° to intercept I-PKN NW course outbound to LINDZ INT/DBL 13 DME. Then on assigned transition, maintain 16000, expect clearance to filed altitude 10 minutes after departure.

LOST COMMUNICATIONS: If no transmissions are received for one minute after departure or by DBL VOR/DME 9 DME, turn left on heading 273° to intercept and proceed via the I-PKN NW course (outbound) to LINDZ INT/DBL VOR/DME 13 DME, then via assigned route/transition.

GRAND JUNCTION TRANSITION (LINDZ1.JNC): From over LINDZ on DBL R-244 to SLOLM, then on JNC R-060 to JNC VOR/DME.

KREMMLING TRANSITION (LINDZ1.RLG): From over LINDZ on SXW R-196 to SXW VOR/DME, then on SXW R-001 to JESIE, then on RLG R-260 to RLG VOR/DME.

MEEKER TRANSITION (LINDZ1.EKR): From over LINDZ on DBL R-244 to SLOLM, then on RIL R-153 to RIL VOR/DME, then on RIL R-334 and EKR R-155 to EKR VOR/DME.

RED TABLE TRANSITION (LINDZ1.DBL): From over LINDZ on DBL R-244 to DBL VOR/DME.

RIFLE TRANSITION (LINDZ1.RIL): From over LINDZ on DBL R-244 to SLOLM, then on RIL R-153 to RIL VOR/DME.

SW-1, 14 MAY 2026 to 11 JUN 2026

SW-1, 14 MAY 2026 to 11 JUN 2026