

(PITKN5.GLENO) 26134

# PITKN FIVE DEPARTURE (RNAV)

ASPEN-PITKIN COUNTY/SARDY FLD (ASE)

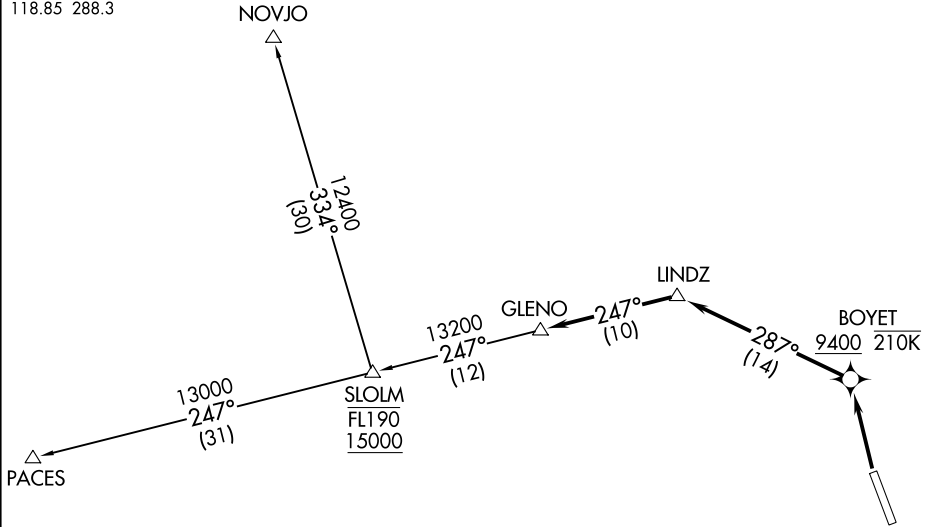
AL-5889 (FAA)

ASPEN, COLORADO

ASPEN DEP CON ★  
 123.8 288.3  
 DENVER CENTER  
 119.85 363.15  
 ATIS  
 120.4  
 CLNC DEL  
 125.475  
 GND CON  
 121.9  
 ASPEN TOWER ★  
 118.85 288.3

RNAV 1 - GPS.

**TOP ALTITUDE:**  
**16000**



SW-1, 14 MAY 2026 to 11 JUN 2026

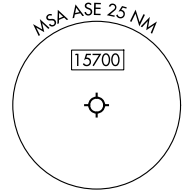
SW-1, 14 MAY 2026 to 11 JUN 2026

### TAKEOFF MINIMUMS

Rwy 15: NA - Environmental.

Rwy 33: 300-1 with minimum climb of 500'/NM to 11200.

NOTE: Chart not to scale.



### DEPARTURE ROUTE DESCRIPTION

TAKEOFF RUNWAY 33: Climb direct BOYET to cross at or above 9400 and at or below 210K, then on track 287° to LINDZ, then on track 247° to GLENO, thence. . . .

. . . .on transition or assigned route, maintain 16000, expect clearance to filed altitude 10 minutes after departure.

NOVJO TRANSITION (PITKN5.NOVJO)

PACES TRANSITION (PITKN5.PACES)

# PITKN FIVE DEPARTURE (RNAV)

(PITKN5.GLENO) 16MAY24

ASPEN, COLORADO  
 ASPEN-PITKIN COUNTY/SARDY FLD (ASE)