

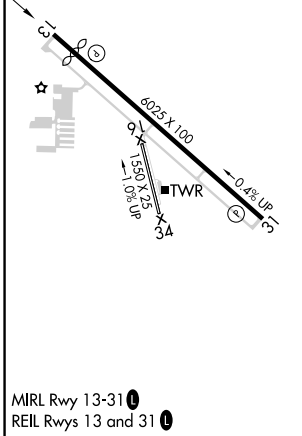
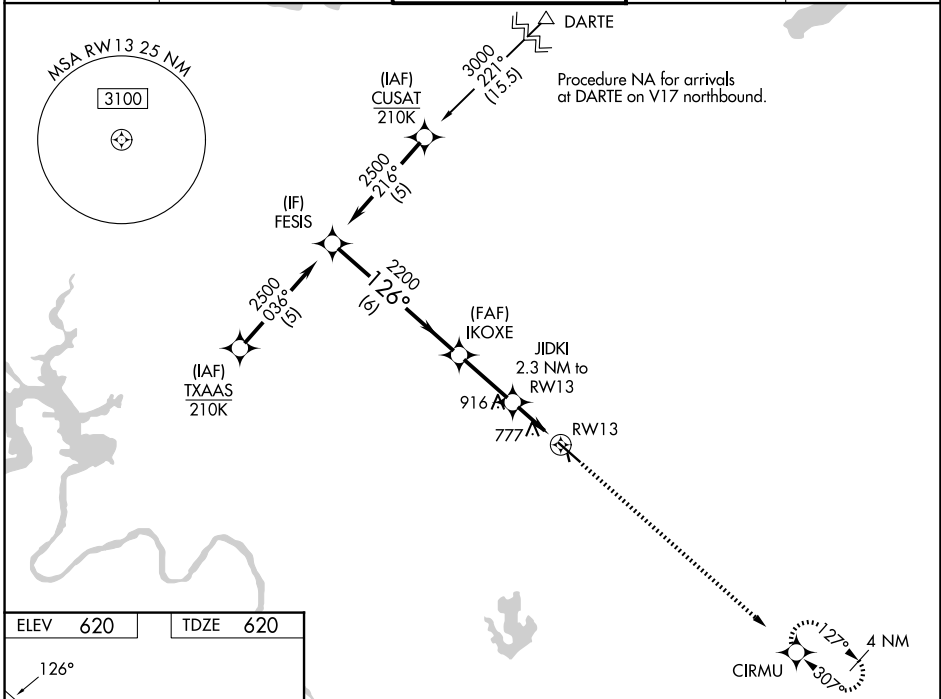
WAAS CH <b>63116</b> <b>W13A</b>	APP CRS <b>126°</b>	Rwy Ldg TDZE Apt Elev	<b>5425</b> <b>620</b> <b>620</b>
----------------------------------------	------------------------	-----------------------------	-----------------------------------------

# RNAV (GPS) RWY 13

AUSTIN EXEC (EDC)

RNP APCH - GPS.	MISSED APPROACH: Climb to 2200 direct CIRMU and hold.
<p>⚠ Circling NA to Rwy 16 and 34. Rwy 13 helicopter visibility reduction below 3/4 SM NA. For uncompensated Baro-VNAV systems, LNAV/VNAV NA below -16°C or above 54°C.</p>	

AWOS-3 <b>118.825</b>	AUSTIN APP CON <b>127.225 317.65</b>	EXECUTIVE TOWER ★ <b>120.3</b> (CTAF) 0	GND CON <b>119.45</b>	UNICOM <b>122.975</b>
--------------------------	-----------------------------------------	--------------------------------------------	--------------------------	--------------------------



	FESIS	IKOXE	JIDKI	RWY13	CIRMU
	2500	2200	2200	1380	2200
		2.3 NM to RWY13	1.3 NM to RWY13		
		6 NM	2.5 NM	1 NM	1.3 NM
CATEGORY	A	B	C	D	
LPV DA		870-3/4 250 (300-3/4)			
LNAV/VNAV DA		1080-1 3/8 460 (500-1 3/8)			
LNAV MDA	1080-1	460 (500-1)	1080-1 3/8	460 (500-1 3/8)	
CIRCLING	1140-1 520 (600-1)	1160-1 540 (600-1)	1280-1 3/4 660 (700-1 3/4)	1280-2 660 (700-2)	

SC-3, 14 MAY 2026 to 11 JUN 2026

SC-3, 14 MAY 2026 to 11 JUN 2026