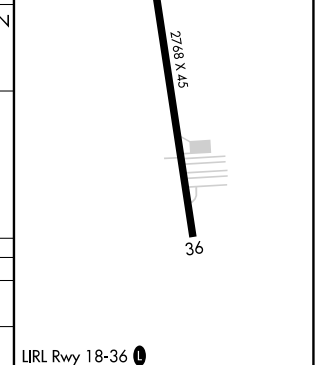
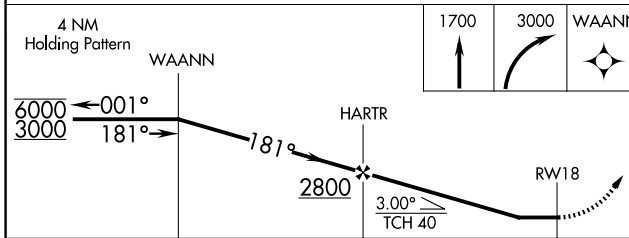
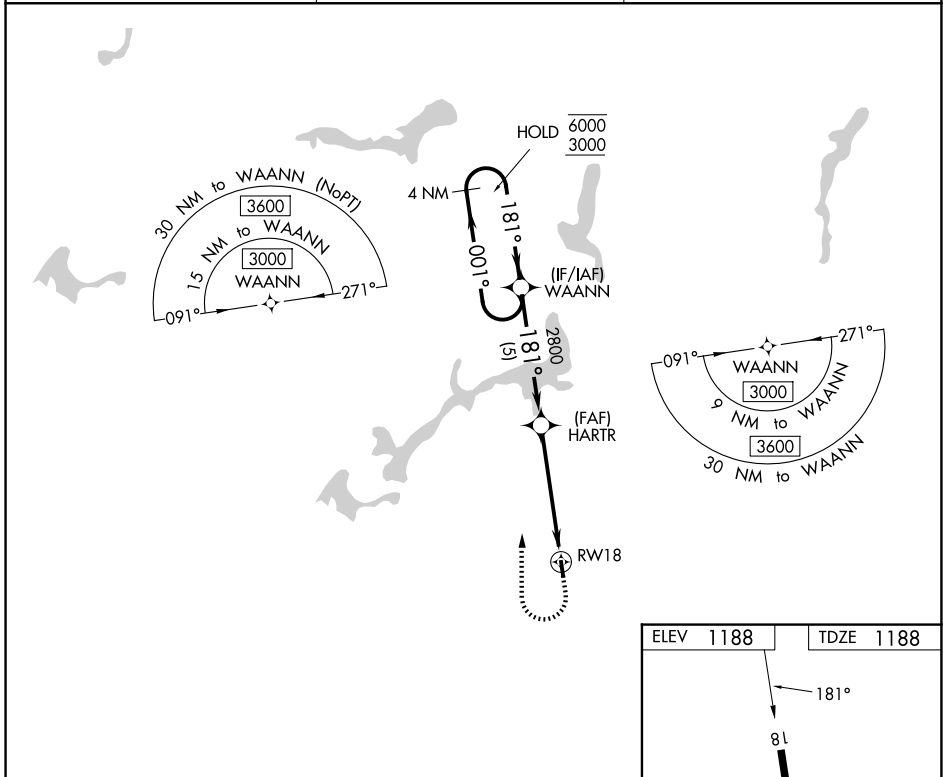


APP CRS	Rwyt Ldg	2768
181°	TDZE	1188
	Apt Elev	1188

RNAV (GPS) RWY 18

TRI-CITY (3G6)

RNP APCH.		MISSED APPROACH: Climb to 1700 then climbing right turn to 3000 direct WAANN and hold.
<p>▼ Procedure NA at night. Rwy 18 helicopter visibility reduction below 1 SM NA.</p> <p>▲ NA Use Akron-Canton Rgnl altimeter setting, when not received, use Ravenna altimeter setting.</p>		
CAK ASOS	CLEVELAND APP CON *	CTAF
121.05	125.5 371.875	122.9 0



CATEGORY	A	B	C	D
LNVA MDA	1720-1	532 (600-1)	NA	
CIRCLING	1720-1 532 (600-1)	1740-1 552 (600-1)	NA	

LIRL Rwy 18-36 0

EC-2, 14 MAY 2026 to 11 JUN 2026

EC-2, 14 MAY 2026 to 11 JUN 2026