

WAAS CH 72924 W02A	APP CRS 017°	Rwy Ldg 5000 TDZE 361 Apt Elev 365
--	------------------------	---

RNAV (GPS) RWY 2

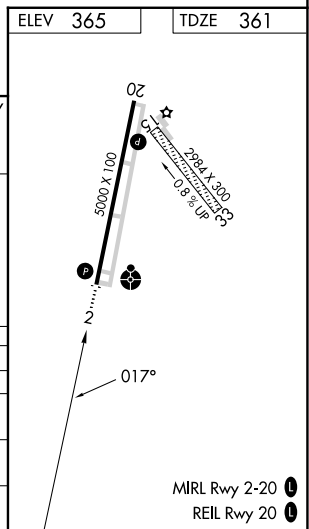
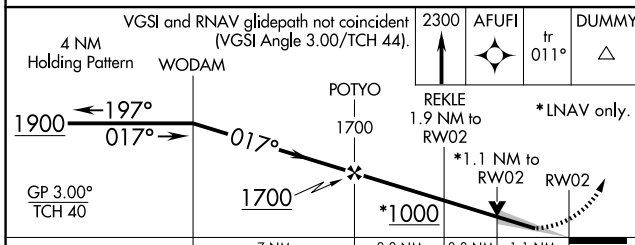
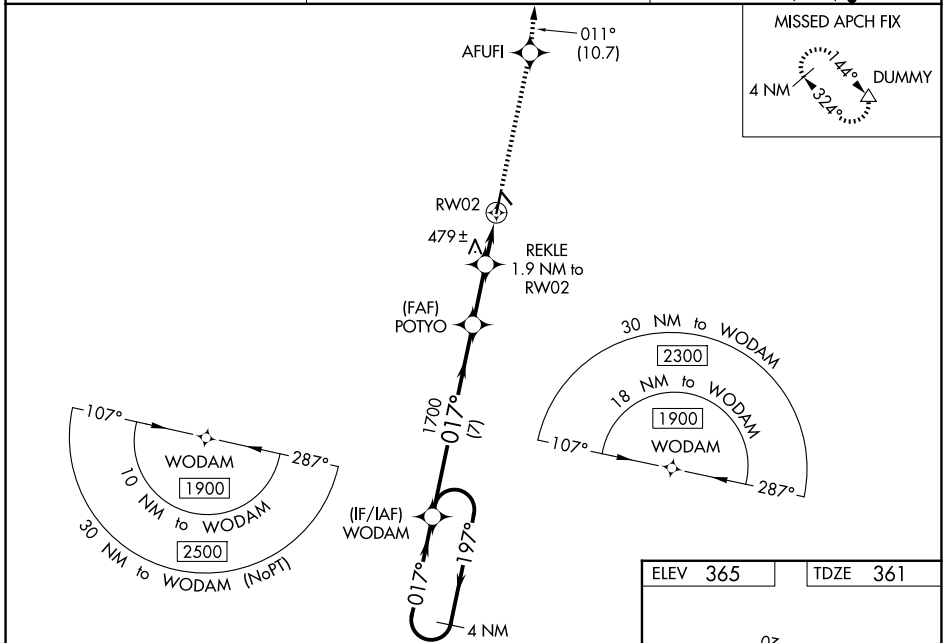
FITZGERALD MUNI (FZG)

RNP APCH - GPS.

▼ Circling NA to Rwy 15 and 33. Baro-VNAV and VDP NA when using Tifton altimeter setting.
▲ For uncompensated Baro-VNAV systems, LNAV/VNAV NA below -15°C or above 54°C.
 When local altimeter setting not received, use Tifton altimeter setting: increase LPV DA to 656 feet and LNAV/VNAV DA to 691 feet; increase LNAV/VNAV all Cats visibility 1/8 SM, increase all MDAs 60 feet and LNAV visibility Cats C/D 1/8 SM, and Circling Cats C/D visibility 1/4 SM. Inop table does not apply to LPV all Cats and LNAV Cats C/D. For inop ALS increase LNAV/VNAV Cats A/B visibility to 7/8 SM. For inop ALS when using Tifton altimeter setting increase LPV Cats A/B visibility to 7/8 SM and LNAV/VNAV Cats A/B visibility to 1 SM.

ODALS 	MISSED APPROACH: Climb to 2300 direct AFUFI and on track 011° to DUMMY and hold.
-----------	---

AWOS-3PT 118.625	JACKSONVILLE CENTER 127.575 269.025	UNICOM 123.0 (CTAF)
----------------------------	---	-------------------------------



CATEGORY	A	B	C	D
LPV DA		611-7/8	250 (300-7/8)	
LNAV/VNAV DA		646-7/8	285 (300-7/8)	
LNAV MDA	740-7/8 379 (400-7/8)		740-1 379 (400-1)	
CIRCLING	880-1 515 (600-1)		1160-2 795 (800-2 1/4)	1160-2 795 (800-2 1/2)

SE-4, 14 MAY 2026 to 11 JUN 2026

SE-4, 14 MAY 2026 to 11 JUN 2026