

APP CRS	Rwy Ldg	N/A
<b>360°</b>	TDZE	N/A
	Apt Elev	<b>1357</b>

# RNAV (GPS)-B

CHERRY RIDGE (N30)

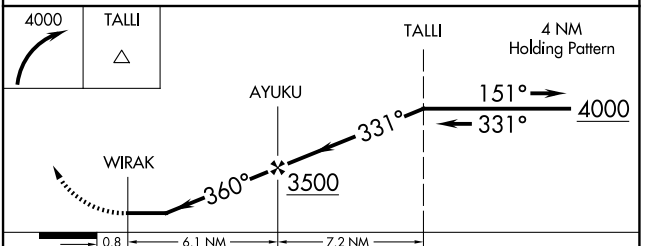
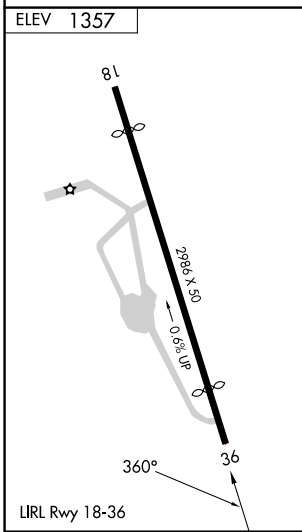
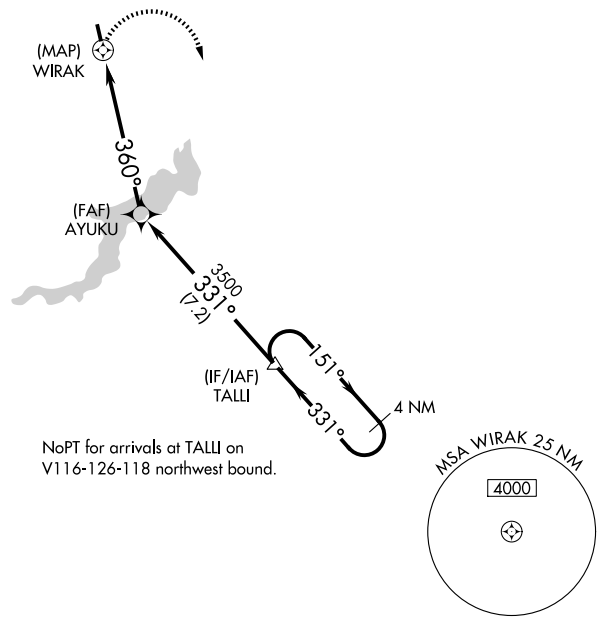
**▼** DME/DME RNP-0.3 NA. Procedure NA at night. Obtain local altimeter setting on CTAF; when not received, use Wilkes-Barre/Scranton Intl altimeter setting, and increase MDA 320 feet and Cat A visibility 1/4 mile.

**▲** NA

MISSED APPROACH: Climbing right turn to 4000 direct TALLI and hold.

WILKES-BARRE APP CON **120.95 256.7**

UNICOM **122.8 (CTAF)**



CATEGORY	A	B	C	D
CIRCLING	2080-1 723 (800-1)		NA	

NE-4, 14 MAY 2026 to 11 JUN 2026

NE-4, 14 MAY 2026 to 11 JUN 2026