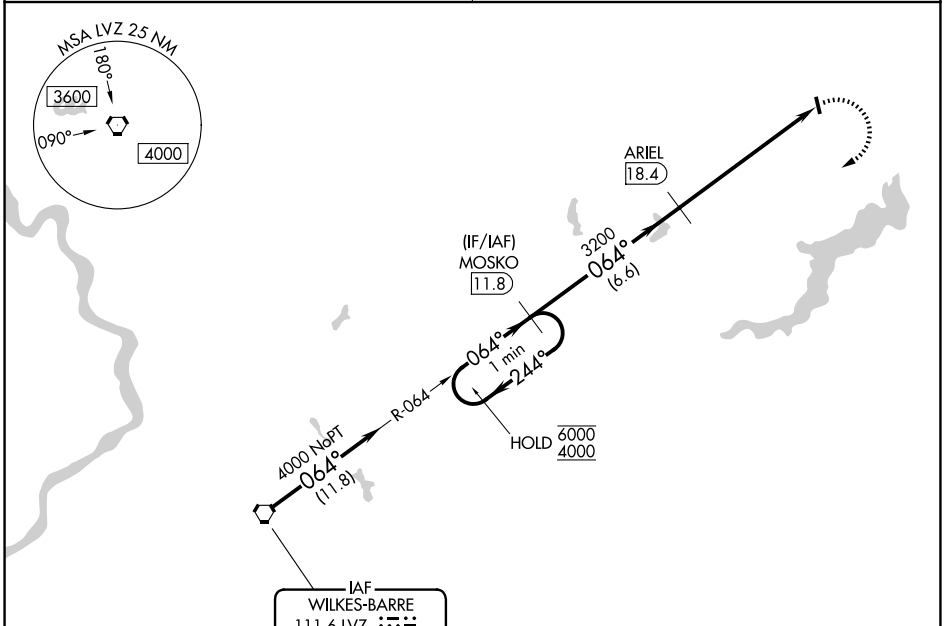


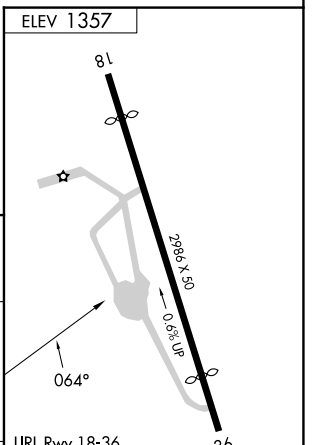
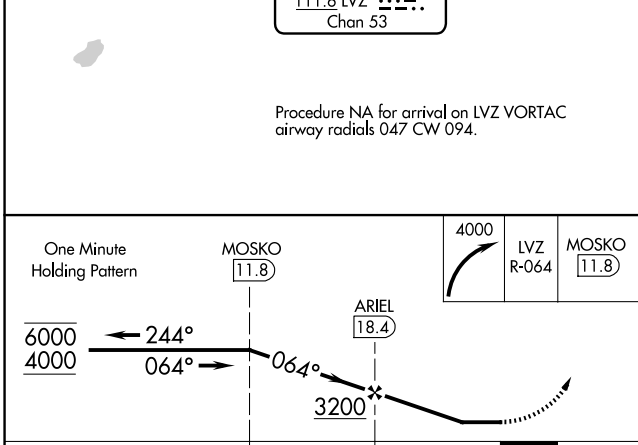
VORTAC LVZ <b>111.6</b> Chan <b>53</b>	APP CRS <b>064°</b>	Rwy Ldg TDZE Apt Elev	<b>N/A</b> <b>N/A</b> <b>1357</b>
--	------------------------	-----------------------------	---

**VOR-A**  
CHERRY RIDGE (N30)

DME required.		MISSED APPROACH: Climbing right turn to 4000 on LVZ VORTAC R-064 to MOSKO 11.8 DME and hold.
▼ ▲ NA	Procedure NA at night. Helicopter visibility reduction below 1 SM NA. Obtain local altimeter setting on CTAF; when not received, use Wilkes-Barre/Scranton altimeter setting and increase all MDAs 120 feet.	
WILKES-BARRE APP CON <b>120.95 256.7</b>		UNICOM <b>122.8 (CTAF)</b>



Procedure NA for arrival on LVZ VORTAC airway radials 047 CW 094.



CATEGORY	A	B	C	D	FAF to MAP 6.1 NM					
CIRCLING	2180-1¼ 823 (900-1¼)	NA			Knots	60	90	120	150	180
					Min:Sec	6:06	4:04	3:03	2:26	2:02

NE-4, 14 MAY 2026 to 11 JUN 2026

NE-4, 14 MAY 2026 to 11 JUN 2026