

WAAS CH 49241 W12A	APP CRS 127°	Rwy Ldg 4553 TDZE 268 Apt Elev 273
--	------------------------	---

RNAV (GPS) RWY 12

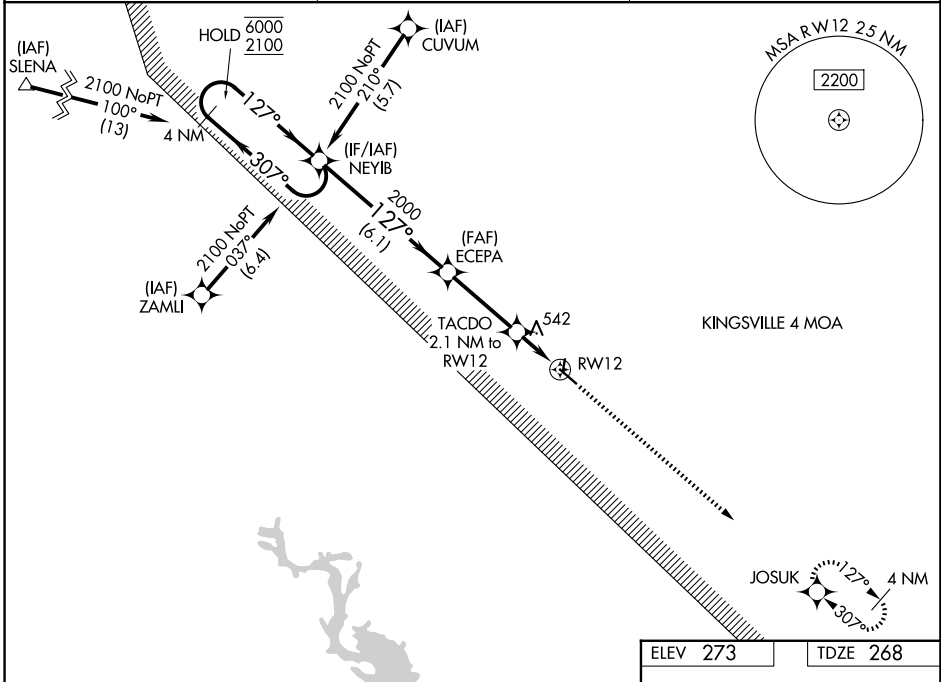
BEEVILLE MUNI (BEA)

RNP APCH - GPS.

⚠ Rwy 12 helicopter visibility reduction below 3/4 SM NA. Circling Rwy 18 and 36 NA at night.
⚠ For uncompensated Baro-VNAV systems, LNAV/VNAV NA below -15°C or above 54°C.

MISSED APPROACH: Climb to 2000 direct JOSUK and hold.

AWOS-3 118.675	HOUSTON CENTER 134.6 322.5	UNICOM 122.8 (CTAF) 0
--------------------------	--------------------------------------	---------------------------------



SC-3, 14 MAY 2026 to 11 JUN 2026

SC-3, 14 MAY 2026 to 11 JUN 2026

4 NM Holding Pattern		VGSI and RNAV glidepath not coincident (VGSI Angle 3.00/TCH 20).		2000	JOSUK
GP 3.00° TCH 40		6.1 NM		3.3 NM	
		2.1 NM			
CATEGORY	A	B	C	D	
LPV DA	518-1	250 (300-1)		NA	
LNAV/VNAV DA	800-1½	532 (600-1½)		NA	
LNAV MDA	800-1	532 (600-1)	800-1½ 532 (600-1½)	NA	
CIRCLING	800-1 527 (600-1)	1000-1 727 (800-1)	1000-2 727 (800-2)	NA	

