

WAAS CH 40247 W33A	APP CRS 329°	Rwy Ldg TDZE Apt Elev	4004 811 811
--	------------------------	-----------------------------	---

RNAV (GPS) RWY 33

INDIANAPOLIS METRO (UMP)

RNP APCH - GPS.

⚠ For uncompensated Baro-VNAV systems, LNAV/VNAV NA below -16°C or above 54°C.
⚠ Rwy 33 helicopter visibility reduction below 3/4 SM NA. Baro-VNAV and VDP NA when using IND altimeter setting. When local altimeter setting not received, use IND altimeter setting and increase LPV DA to 1117 feet; increase LNAV/VNAV DA to 1260 feet and all visibilities 1/4 SM. Increase all MDAs 60 feet and LNAV visibility Cat C 1/4 SM.

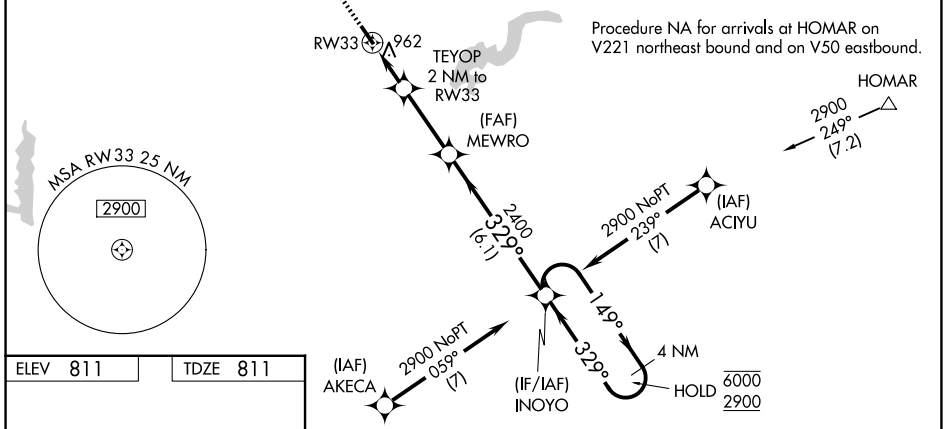
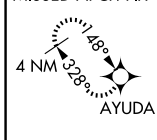
MISSED APPROACH:
Climb to 2500 direct AYUDA and hold.

AWOS-3PT
119.375

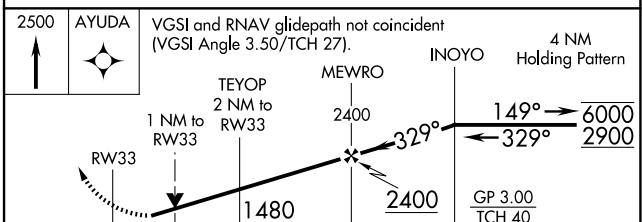
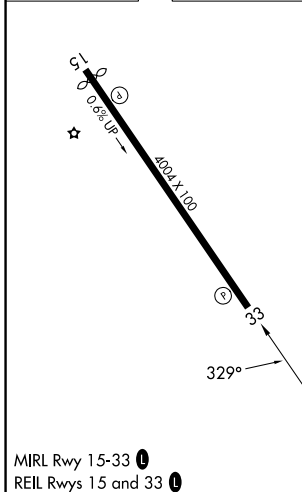
INDIANAPOLIS APP CON
127.15 317.8

UNICOM
123.0 (CTAF) **📻**

MISSED APCH FIX



ELEV 811	TDZE 811
-----------------	-----------------



CATEGORY	A	B	C	D
LPV DA	1074-1		263 (300-1)	NA
LNAV/VNAV DA	1217-1½		406 (500-1½)	NA
LNAV MDA	1220-1	409 (500-1)	1220-1½ 409 (500-1½)	NA
CIRCLING	1320-1 509 (600-1)	1340-1 529 (600-1)	1340-1½ 529 (600-1½)	NA