

| | | |
|--|------------------------|---|
| WAAS CH 56414 W36A | APP CRS 360° | Rwy ldg 3200 TDZE 296 Apt Elev 296 |
|--|------------------------|---|

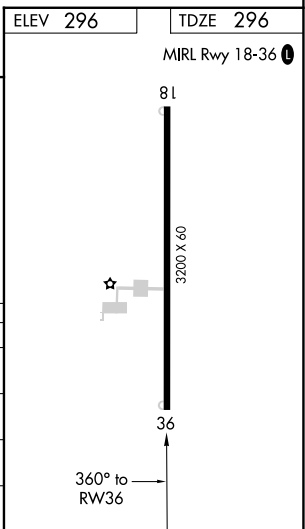
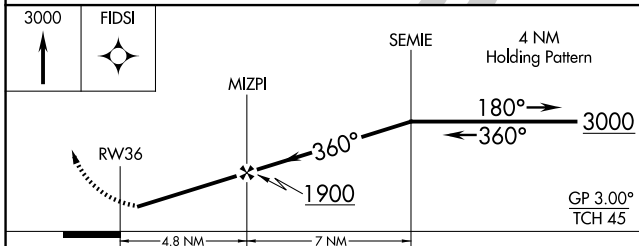
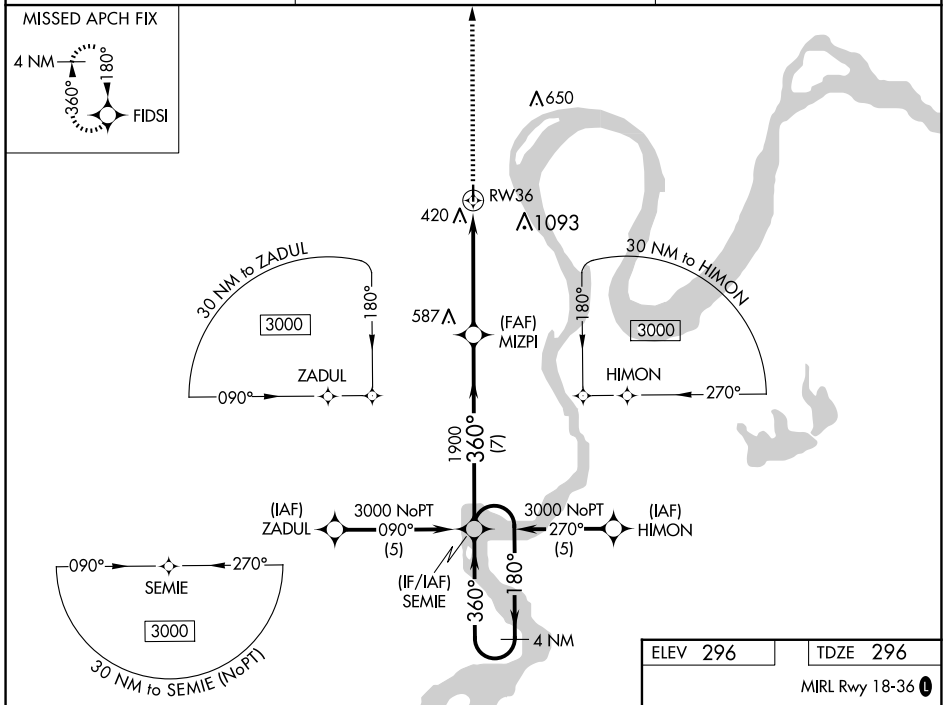
RNAV (GPS) RWY 36

COUNTY MEML (EIW)

▼ Baro-VNAV NA. DME/DME RNP-0.3 NA. Visibility reduction by helicopters NA. Use Dyersburg altimeter setting; when not received, use Cairo altimeter setting and increase all DA 5 feet and all MDA 20 feet. Straight-in/Circling to Rwy 36 NA at night.

▲ NA MISSED APPROACH: Climb to 3000 direct FIDSI and hold.

| | | |
|--------------------------------|--|---------------------------------|
| DYR AWOS-3PT 135.625 | MEMPHIS CENTER 133.65 292.15 | UNICOM 122.8 (CTAF) 0 |
|--------------------------------|--|---------------------------------|



| CATEGORY | A | B | C | D |
|--------------|----------------------|----------------------|---|----|
| LPV DA | 668-1¼ | 372 (400-1¼) | | NA |
| LNAV/VNAV DA | 900-2¼ | 604 (700-2¼) | | NA |
| LNAV MDA | 820-1 | 524 (600-1) | | NA |
| CIRCLING | 860-1 564 (600-1) | 900-1 604 (700-1) | | NA |

NC-3, 14 MAY 2026 to 11 JUN 2026

NC-3, 14 MAY 2026 to 11 JUN 2026