

| | | |
|-------------|----------|-------------|
| APP CRS | Rwy Ldg | 4002 |
| 240° | TDZE | 632 |
| | Apt Elev | 632 |

RNAV (GPS) RWY 24

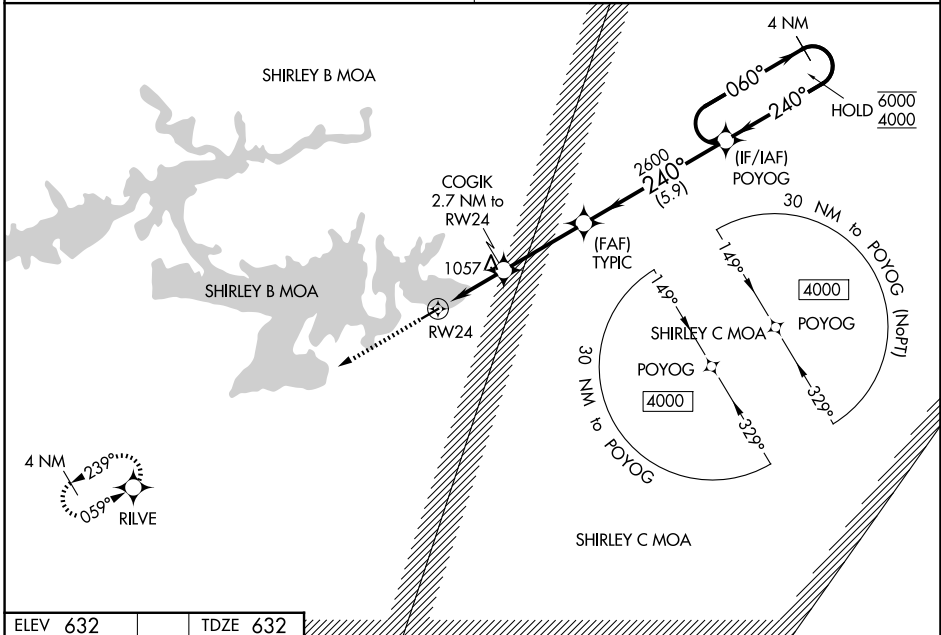
HEBER SPRINGS MUNI (HBZ)

RNP APCH

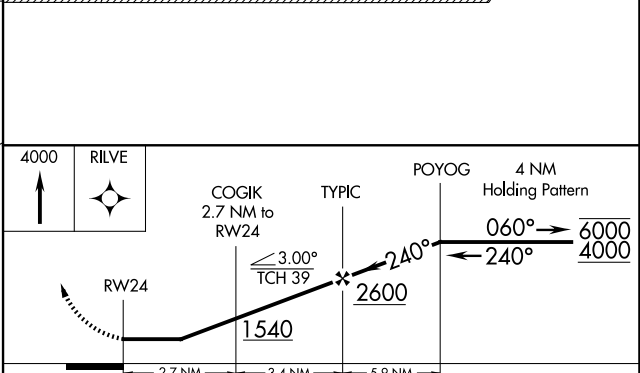
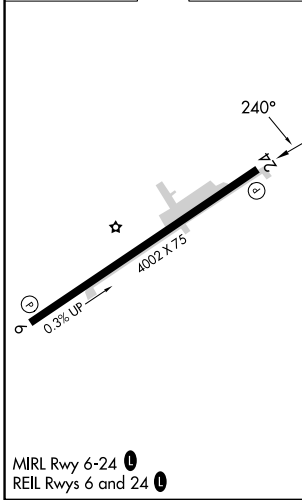
Procedure NA at night. Rwy 24 helicopter visibility reduction below 1 SM NA. Obtain local altimeter setting on CTAF; when not received, use Batesville altimeter setting and increase all MDAs 80 feet, and increase LNAV visibility Cat B ¼ SM, Cat C and D ½ SM. Increase Circling visibility Cat B, C ¼ SM, and Cat D ½ SM.

MISSED APPROACH: Climb to 4000 direct RILVE and hold, continue climb-in-hold to 4000.

| | |
|--|---------------------------------|
| MEMPHIS CENTER 126.85 281.55 | UNICOM 122.7 (CTAF) 0 |
|--|---------------------------------|



| | |
|----------|----------|
| ELEV 632 | TDZE 632 |
|----------|----------|



| CATEGORY | A | B | C | D |
|----------|-----------------------|-----------------------|-------------------------|-------------------------|
| LNAV MDA | 1320-1 | 688 (700-1) | 1320-2 | 688 (700-2) |
| CIRCLING | 1320-1 688 (700-1) | 1380-1 748 (800-1) | 1380-2¼ 748 (800-2¼) | 1440-2½ 808 (900-2½) |

SC-1, 14 MAY 2026 to 11 JUN 2026

SC-1, 14 MAY 2026 to 11 JUN 2026