

| | | |
|-------------|----------|-------------|
| APP CRS | Rwy Ldg | 4002 |
| 060° | TDZE | 631 |
| | Apt Elev | 632 |

RNAV (GPS) RWY 6

HEBER SPRINGS MUNI (HBZ)

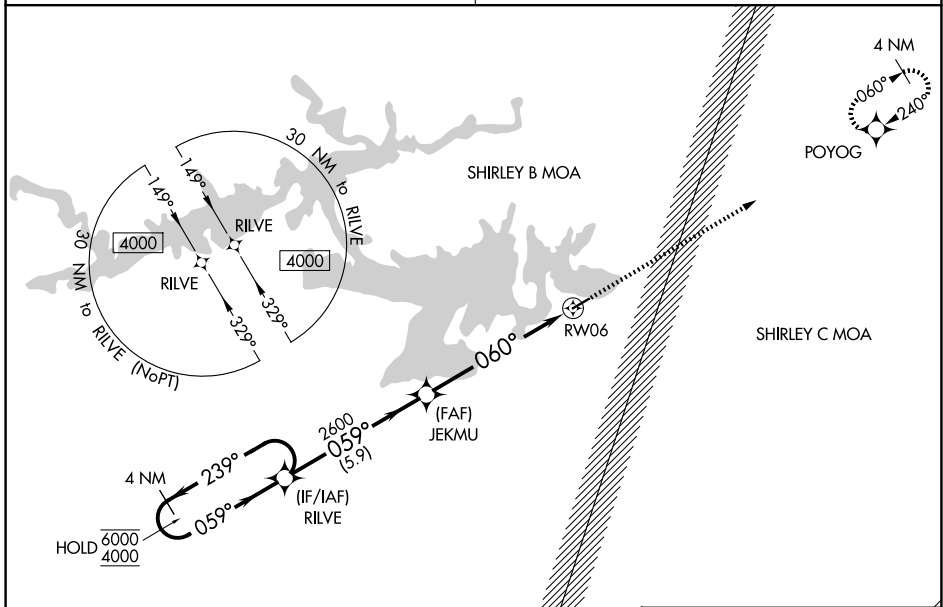
RNP APCH.

⚠ Procedure NA at night. Rwy 6 helicopter visibility reduction below 1 SM NA. Obtain local altimeter setting on CTAF; when not received, use Batesville altimeter setting and increase all MDAs 80 feet, and increase LNAV visibility Cat C and D 1/4 SM. Increase Circling visibility Cat C 1/4 SM, Cat D 1/2 SM.

MISSED APPROACH: Climb to 4000 direct POYOG and hold, continue climb-in hold 4000.

MEMPHIS CENTER
126.85 281.55

UNICOM
122.7 (CTAF) 0

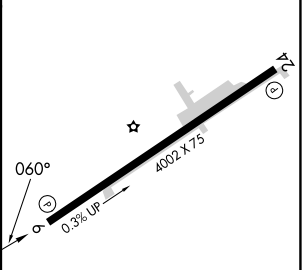
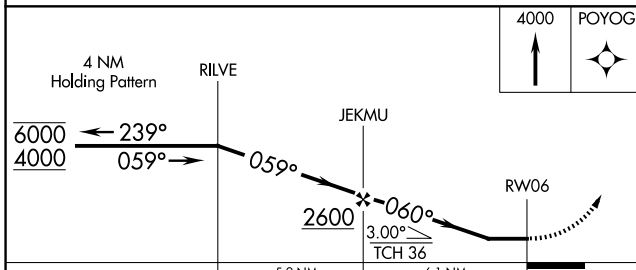


SC-1, 14 MAY 2026 to 11 JUN 2026

SC-1, 14 MAY 2026 to 11 JUN 2026

ELEV 632

TDZE 631



| CATEGORY | A | B | C | D |
|----------|-----------------------|-----------------------|--|--|
| LNAV MDA | 1240-1 | 609 (700-1) | 1240-1 ³ / ₄ | 609 (700-1 ³ / ₄) |
| CIRCLING | 1240-1 608 (700-1) | 1380-1 748 (800-1) | 1380-2 ¹ / ₄ 748 (800-2 ¹ / ₄) | 1440-2 ¹ / ₂ 808 (900-2 ¹ / ₂) |

MIRL Rwy 6-24 0
REIL Rws 6 and 24 0