

|  |                        |   |
|--|------------------------|---|
| WAAS<br>CH <b>62805</b><br><b>W35A</b> | APP CRS<br><b>350°</b> | Rwy Ldg <b>5000</b><br>TDZE <b>756</b><br>Apt Elev <b>763</b> |
|--|------------------------|---|

# RNAV (GPS) RWY 35

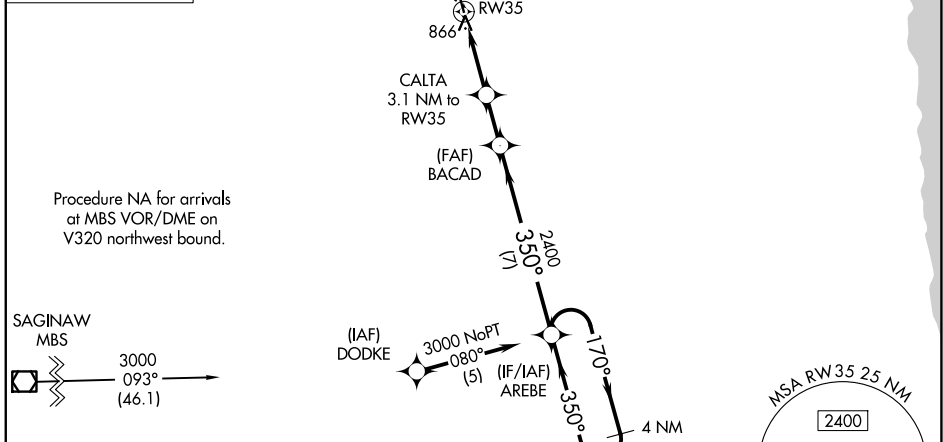
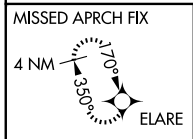
HURON COUNTY MEML (BAX)

**RNP APCH.**

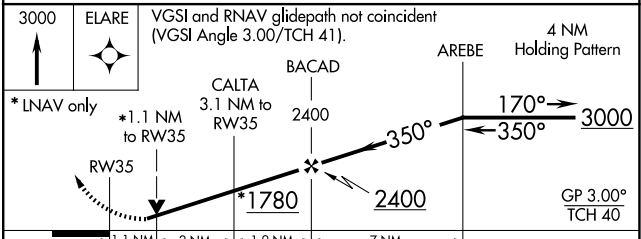
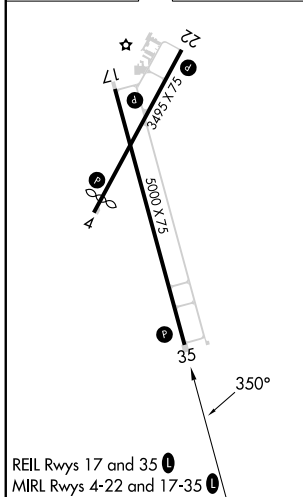
**⚠** For uncompensated Baro-VNAV systems, LNAV/VNAV NA below -16°C or above 54°C. When local altimeter setting not received, use MBS Intl altimeter setting and increase all DA 129 feet and all MDA 140 feet; increase LPV all Cats and LNAV Cat C visibility 3/8 mile. Rwy 35 helicopter visibility reduction below 3/4 SM NA. VDP and Baro/VNAV NA when using MBS Intl altimeter setting.

**MISSED APPROACH:** Climb to 3000 direct ELARE and hold.

|                         |  |                                   |
|-------------------------|--|-----------------------------------|
| AWOS-3P<br><b>118.6</b> | CLEVELAND CENTER<br><b>127.7 290.425</b> | UNICOM<br><b>123.075 (CTAF) 0</b> |
|-------------------------|--|-----------------------------------|



|          |          |
|----------|----------|
| ELEV 763 | TDZE 756 |
|----------|----------|



| CATEGORY     | A                     | B                       | C                       | D  |
|--------------|-----------------------|-------------------------|-------------------------|----|
| LPV DA       | 1113-1¼               | 357 (400-1¼)            |                         | NA |
| LNAV/VNAV DA | 1154-1½               | 398 (400-1½)            |                         | NA |
| LNAV MDA     | 1520-1<br>764 (800-1) | 1520-1¼<br>764 (800-1¼) | 1520-2½<br>764 (800-2½) | NA |

EC-1, 14 MAY 2026 to 11 JUN 2026

EC-1, 14 MAY 2026 to 11 JUN 2026