

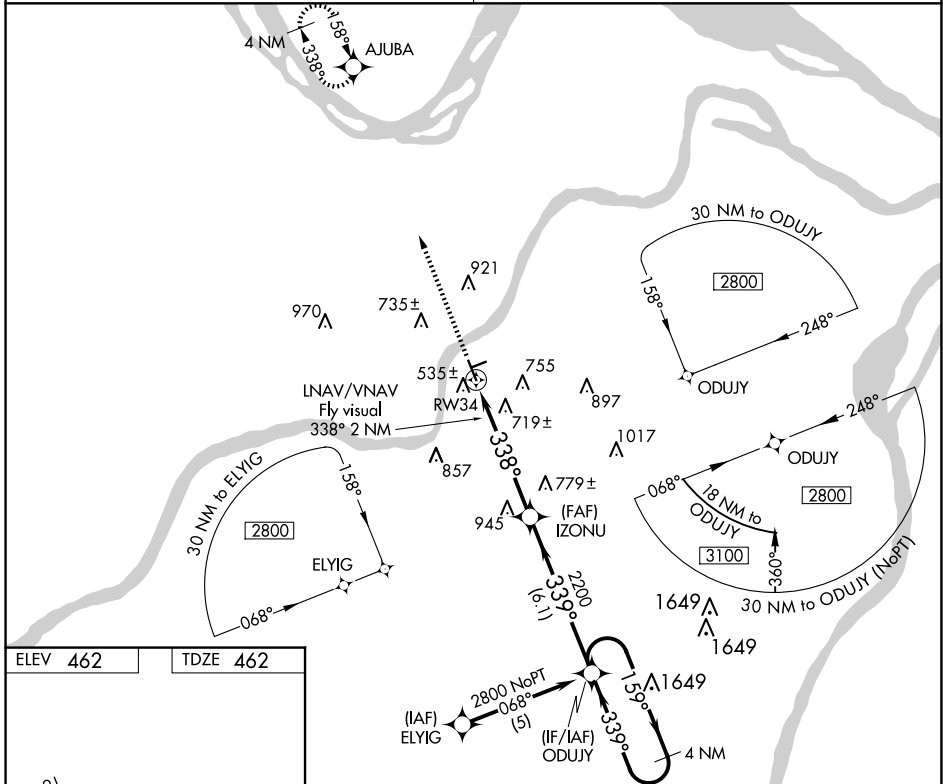
WAAS CH <b>93905</b> <b>W34A</b>	APP CRS <b>338°</b>	Rwy Idg TDZE Apt Elev	<b>4500</b> <b>462</b> <b>462</b>
--	------------------------	-----------------------------	---

# RNAV (GPS) RWY 34

CREVE COEUR (1H0)

RNP APCH.	MISSED APPROACH: Climb to 2700 direct AJUBA and hold.
<p>▼ Use St Louis Lambert Intl altimeter setting. Baro-VNAV NA. Circling Rwy 16 NA at night.</p> <p>▲ NA Circling NA to Rws 7 and 25. Rwy 34 helicopter visibility reduction below ¾ SM NA.</p>	

ST. LOUIS APP CON <b>126.5 254.3</b>	UNICOM <b>122.8 (CTAF)</b>
---	-------------------------------



CATEGORY	A	B	C	D
LPV DA	809-1¼ 347 (400-1¼)			NA
LNNAV/VNAV DA	1131-2 669 (700-2)			NA
LNNAV MDA	1080-1 618 (700-1)			NA
CIRCLING	1080-1 618 (700-1)	1120-1 658 (700-1)		NA

NC-3, 14 MAY 2026 to 11 JUN 2026

NC-3, 14 MAY 2026 to 11 JUN 2026