

WAAS CH 78310 W35A	APP CRS 343°	Rwy Ldg TDZE Apt Elev	5001 35 37
--	------------------------	-----------------------------	---------------------------------------

RNAV (GPS) RWY 35

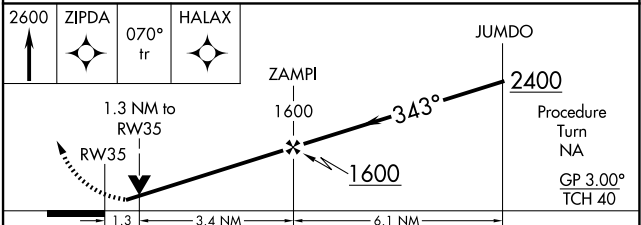
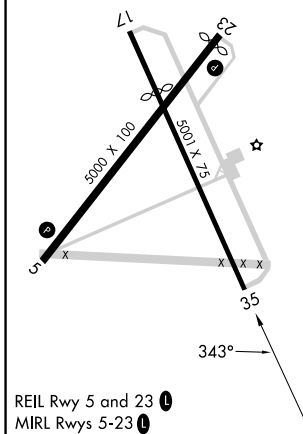
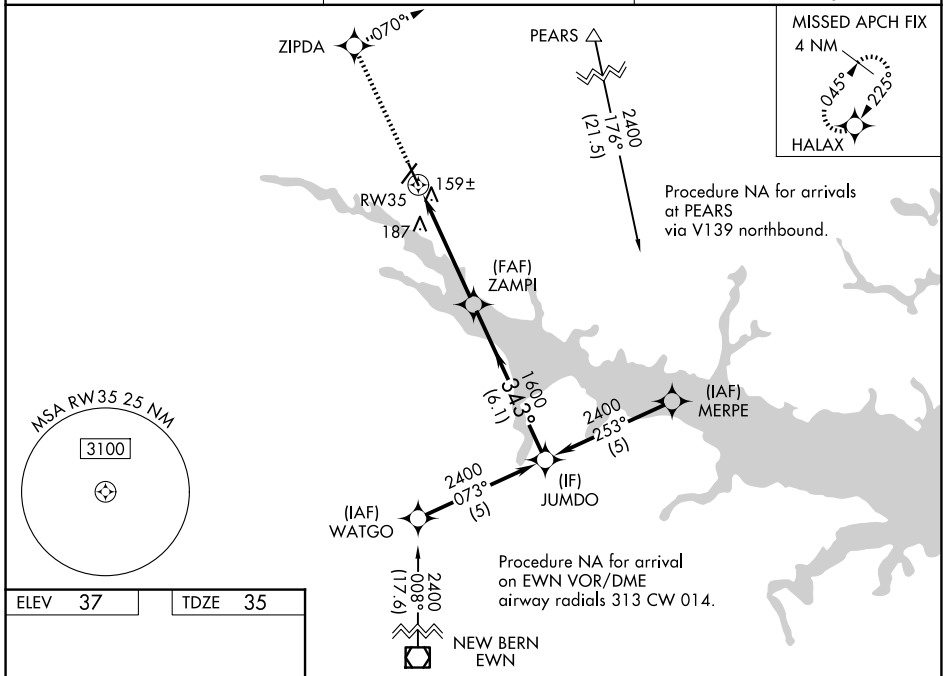
WASHINGTON-WARREN (OCW)

RNP APCH-GPS.

Baro-VNAV and VDP NA when using Greenville altimeter setting. For uncompensated Baro-VNAV systems, LNAV/VNAV NA below -15°C or above 54°C. Rwy 35 helicopter visibility reduction below ¾ SM NA. When local altimeter setting not received, use Greenville altimeter setting: increase LPV DA to 401 feet, and LNAV/VNAV DA to 535 feet; increase all MDAs 60 feet and visibility LNAV Cat C/D ½ SM. Straight-in Minimums NA at night, Circling Rwy 17 NA at night.

MISSED APPROACH: Climb to 2600 direct ZIPDA and via 070° track to HALAX and hold.

AWOS-3 120.175	CHERRY POINT APP CON 119.35 377.175	UNICOM 122.7 (CTAF) 0
--------------------------	---	---------------------------------



CATEGORY	A	B	C	D
LPV DA	359-1		324 (400-1)	
LNAV/VNAV DA	493-1¾		458 (500-1¾)	
LNAV MDA	500-1	465 (500-1)	500-1¾	465 (500-1¾)
CIRCLING	540-1	503 (600-1)	640-1¾ 603 (700-1¾)	780-2½ 743 (800-2½)

SE-2, 14 MAY 2026 to 11 JUN 2026

SE-2, 14 MAY 2026 to 11 JUN 2026