

WAAS CH <b>56316</b> <b>W30A</b>	APP CRS <b>301°</b>	Rwy Idg <b>5001</b> TDZE <b>99</b> Apt Elev <b>99</b>
--	------------------------	---

# RNAV (GPS) RWY 30

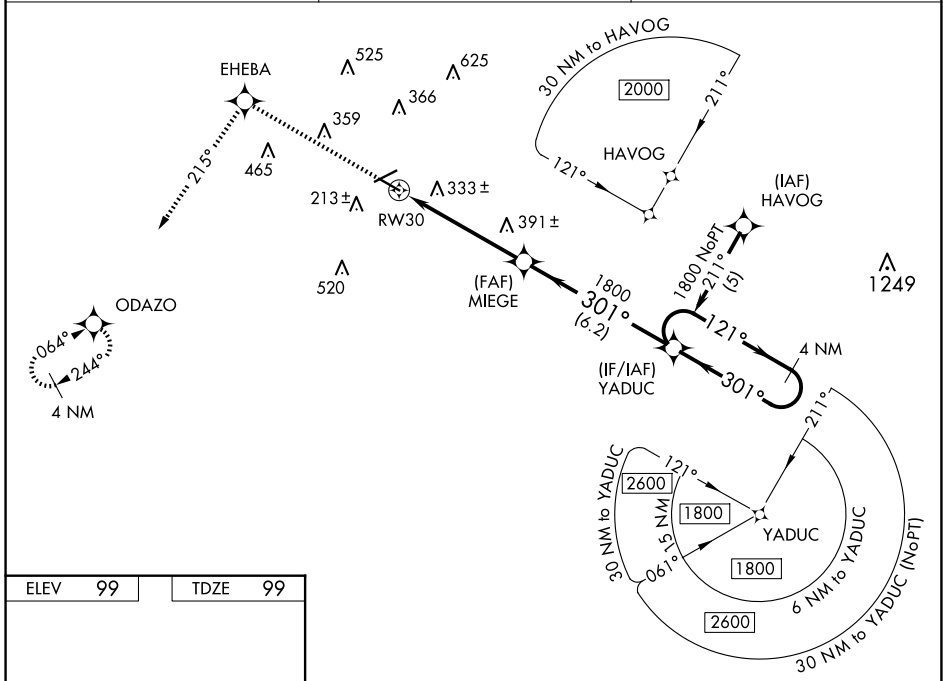
BREWTON MUNI (12J)

**RNP APCH.**

**NA** Baro-VNAV NA when using Pensacola altimeter setting. For uncompensated Baro-VNAV systems, LNAV/VNAV NA below -15°C or above 48°C. Rwy 30 helicopter visibility reduction below ¾ SM NA. When local altimeter setting not received, use Pensacola altimeter setting; increase LPV DA to 611 feet; increase LNAV/VNAV DA to 787 feet; increase all MDAs 100 feet; increase LPV all Cats, LNAV/VNAV all Cats and LNAV Cats C and D visibility ¼ SM. VDP NA when using Pensacola altimeter setting.

**MISSED APPROACH:** Climb to 2000 direct EHEBA and on track 215° to ODAZO and hold.

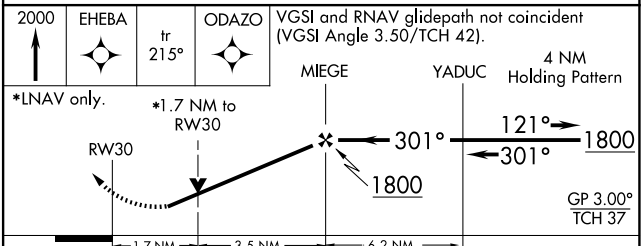
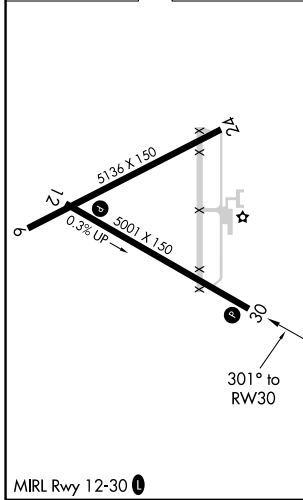
AWOS-3PT <b>119.325</b>	PENSACOLA APP CON <b>127.35 291.625</b>	UNICOM <b>122.725</b> (CTAF) <b>0</b>
----------------------------	--	--



SE-4, 14 MAY 2026 to 11 JUN 2026

SE-4, 14 MAY 2026 to 11 JUN 2026

ELEV <b>99</b>	TDZE <b>99</b>
----------------	----------------



CATEGORY	A	B	C	D
LPV DA	527-1½ 428 (500-1½)			
LNAV/VNAV DA	703-2¼ 604 (700-2¼)			
LNAV MDA	660-1	561 (600-1)	660-1½ 561 (600-1½)	660-1¾ 561 (600-1¾)