

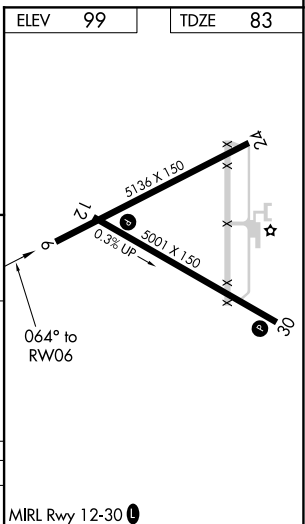
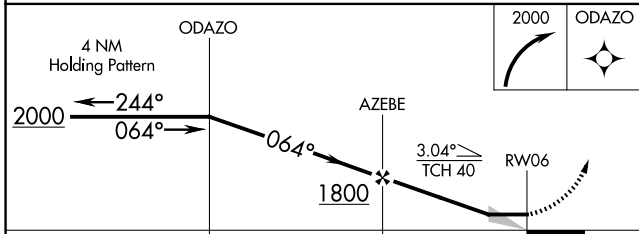
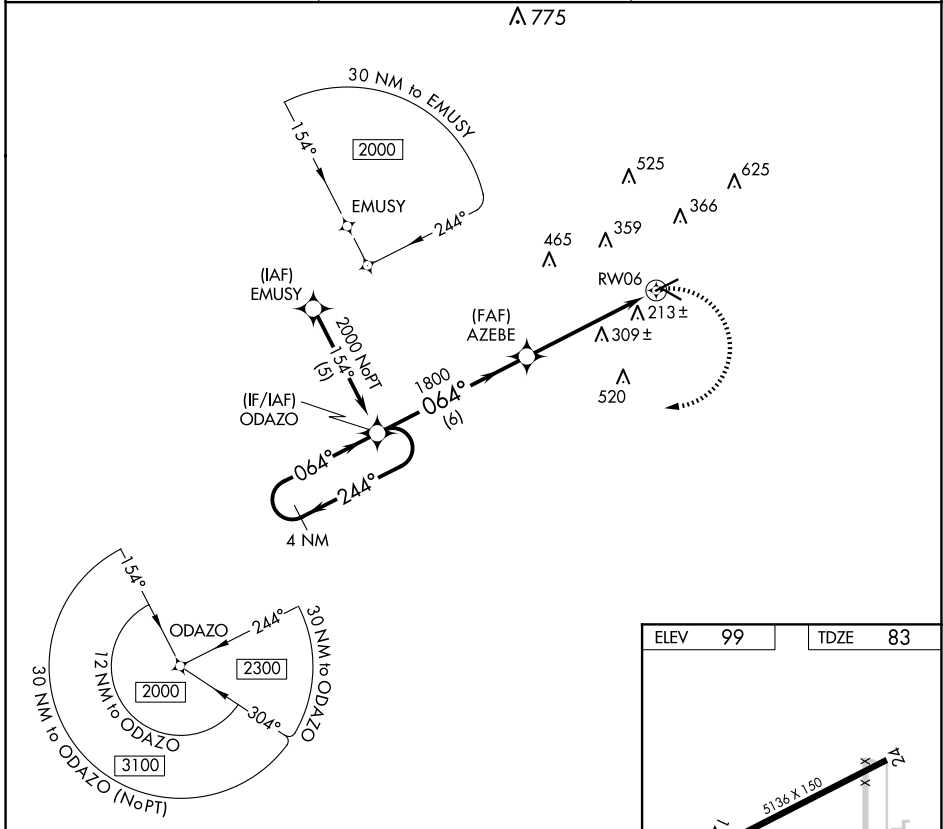
APP CRS	Rwy Idg	5136
064°	TDZE	83
	Apt Elev	99

RNAV (GPS) RWY 6

BREWTON MUNI (12J)

RNP APCH.	When local altimeter setting not received, use Pensacola altimeter setting and increase all MDA 100 feet; increase LNAV Cats C and D visibility ¼ SM. Procedure NA at night.	MISSED APPROACH: Climbing right turn to 2000 direct ODAZO and hold.
-----------	--	---

AWOS-3PT 119.325	PENSACOLA APP CON 127.35 291.625	UNICOM 122.725 (CTAF) 0
----------------------------	--	-----------------------------------



CATEGORY	A	B	C	D
LNAV MDA	560-1	477 (500-1)	560-1 3/8	477 (500-1 3/8)

SE-4, 14 MAY 2026 to 11 JUN 2026

SE-4, 14 MAY 2026 to 11 JUN 2026