

| | | |
|--|------------------------|---|
| WAAS CH 65809 W01A | APP CRS 009° | Rwy Idg TDZE 588 Apt Elev 588 |
|--|------------------------|---|

RNAV (GPS) RWY 1

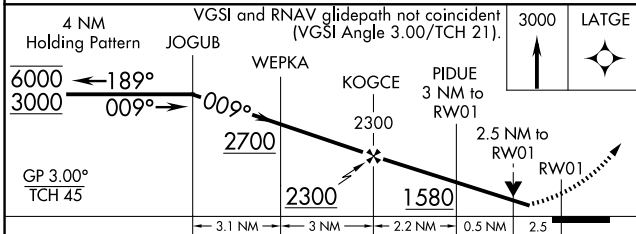
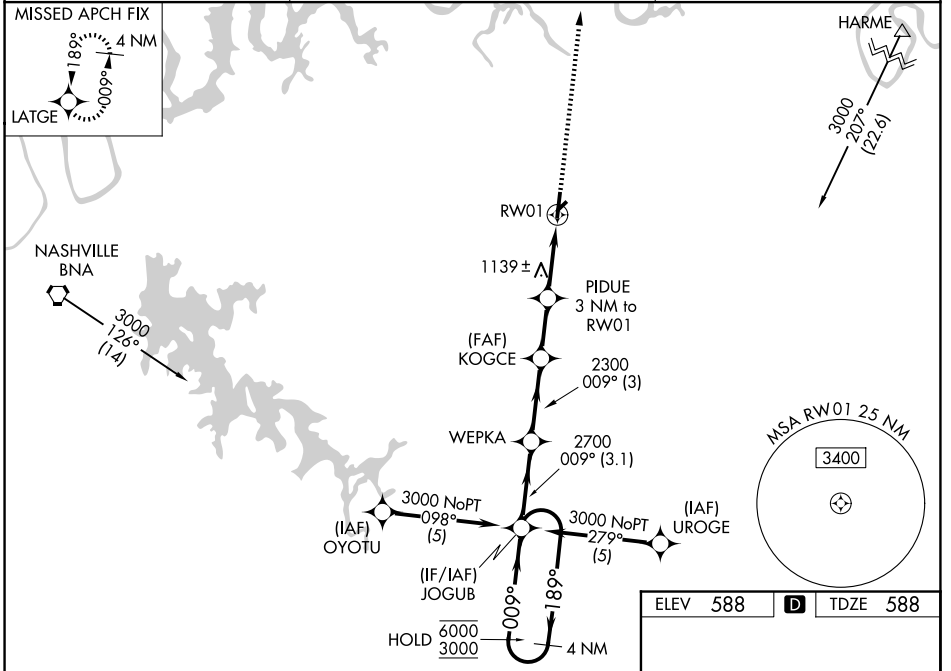
LEBANON MUNI (M54)

RNP APCH - GPS.

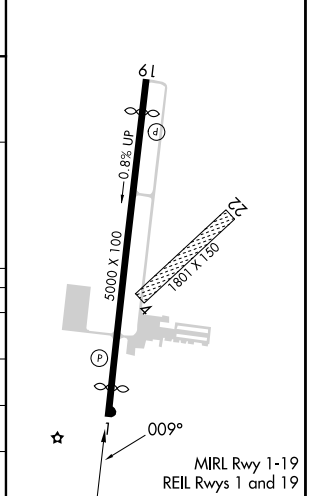
NA For uncompensated Baro-VNAV systems, LNAV/VNAV NA below -16° C or above 54° C. Baro-VNAV and VDP NA when using XNX altimeter setting. Rwy 1 helicopter visibility reduction below 3/4 SM NA. Circling NA to Rwy 4 and 22. When local altimeter setting not received, use XNX altimeter setting: increase LPV DA to 1121 feet and all visibilities 1/2 SM; increase LNAV/VNAV DA to 1433 feet; increase all MDAs 40 feet and Circling Cat C visibility 1/2 SM.

MISSED APPROACH:
Climb to 3000 direct LATGE and hold.

| | | |
|--------------------------|---|---------------------------------|
| AWOS-3 118.325 | NASHVILLE APP CON 118.4 360.7 | UNICOM 122.725 (CTAF) |
|--------------------------|---|---------------------------------|



| | | |
|----------|----------|----------|
| ELEV 588 | D | TDZE 588 |
|----------|----------|----------|



| CATEGORY | A | B | C | D |
|--------------|----------------------------|-------------------------------|-------------------------------|------------------------|
| LPV DA | 1088-1 3/8 500 (500-1 3/8) | | | |
| LNAV/VNAV DA | 1400-2 1/2 812 (900-2 1/2) | | | |
| LNAV MDA | 1400-1 812 (900-1) | 1400-1 1/4 812 (900-1 1/4) | 1400-2 1/2 | 812 (900-2 1/2) |
| CIRCLING | 1400-1 1/4 | 812 (900-1 1/4) | 1440-2 1/2 852 (900-2 1/2) | 1520-3 932 (1000-3) |

SE-1, 14 MAY 2026 to 11 JUN 2026

SE-1, 14 MAY 2026 to 11 JUN 2026