

WAAS CH 90309 W19A	APP CRS 189°	Rwy Ldg TDZE Apt Elev	4500 568 588
----------------------------------------	------------------------	-----------------------------	-----------------------------------------

RNAV (GPS) RWY 19

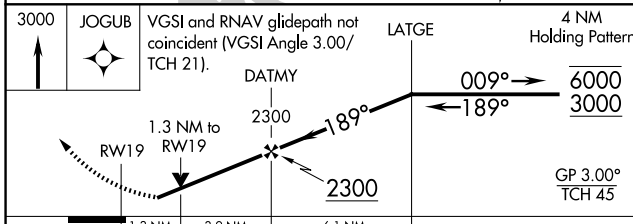
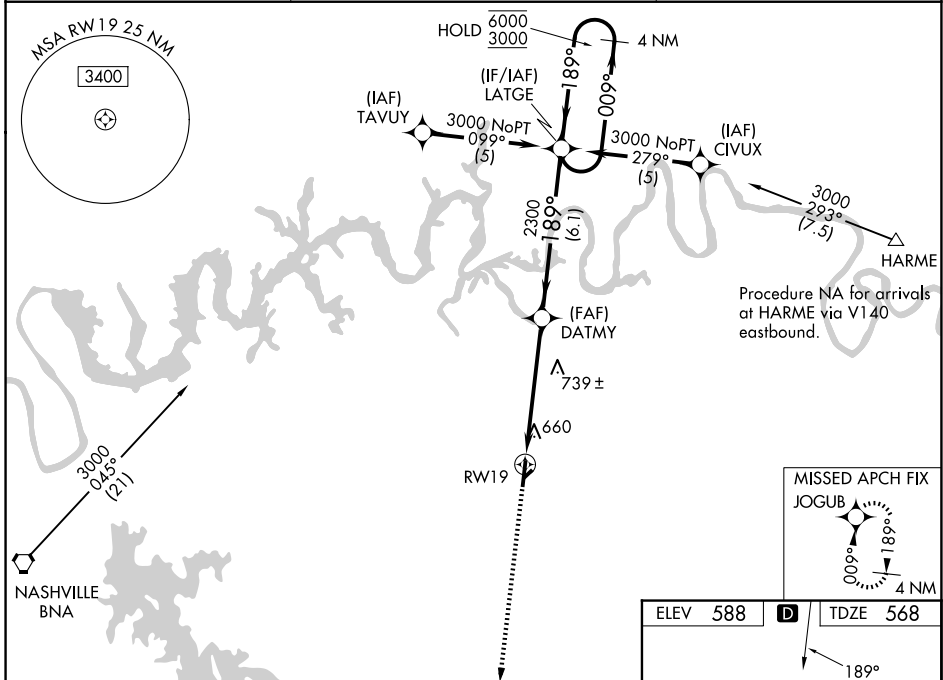
LEBANON MUNI (M54)

RNP APCH - GPS.

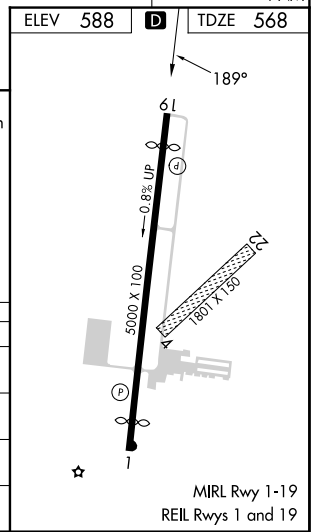
For uncompensated Baro-VNAV systems, LNAV/VNAV NA below -16° C or above 54° C. Baro-VNAV and VDP NA when using XNX altimeter setting. Rwy 19 helicopter visibility reduction below ¼ SM NA. Circling NA to Rwy 4 and 22. When local altimeter setting not received, use XNX altimeter setting: increase LPV DA to 932 feet; increase LNAV/VNAV DA to 1029 feet and all visibilities ½ SM; increase all MDAs 40 feet, LNAV visibility Cat C and D ½ SM, and Circling Cat C visibility ¼ SM.

MISSED APPROACH: Climb to 3000 direct JOGUB and hold.

AWOS-3 118.325	NASHVILLE APP CON 118.4 360.7	UNICOM 122.725 (CTAF)
--------------------------	-----------------------------------------	---------------------------------



CATEGORY	A	B	C	D
LPV DA	899-1		331 (400-1)	
LNAV/VNAV DA	996-1¼		428 (500-1¼)	
LNAV MDA	1000-1	432 (500-1)	1000-1¼	432 (500-1¼)
CIRCLING	1100-1 512 (600-1)	1200-1 612 (700-1)	1440-2½ 852 (900-2½)	1520-3 932 (1000-3)



SE-1, 14 MAY 2026 to 11 JUN 2026

SE-1, 14 MAY 2026 to 11 JUN 2026