

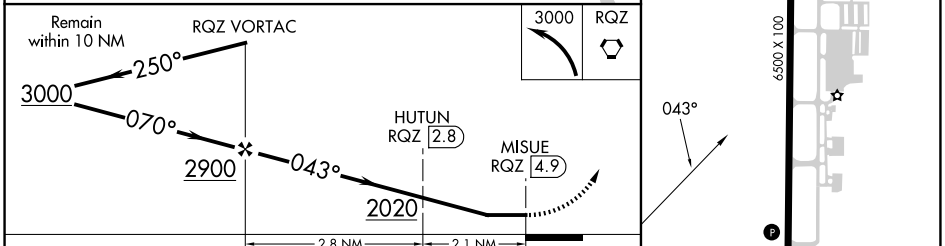
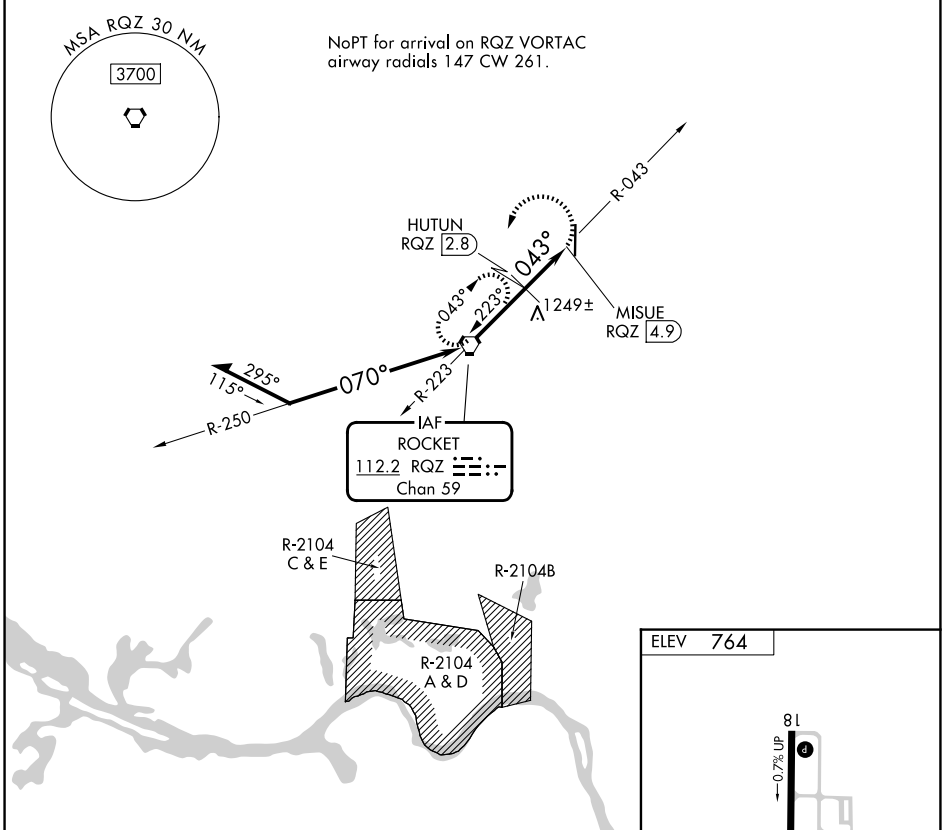
VORTAC RQZ <b>112.2</b> Chan <b>59</b>	APP CRS <b>043°</b>	Rwy Ldg TDZE Apt Elev <b>N/A</b> <b>N/A</b> <b>764</b>
--	------------------------	--

# VOR-B

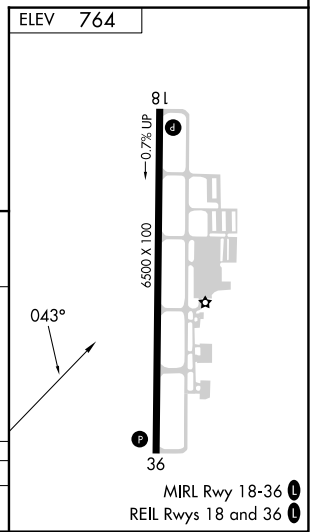
HUNTSVILLE EXEC TOM SHARP JR FLD (MDQ)

DME required.		MISSED APPROACH: Climbing left turn to 3000 direct RQZ VORTAC and hold.	
---------------	--	---	--

AWOS-3PT <b>120.0</b>	HUNTSVILLE APP CON★ <b>125.6 354.1</b>	GCO <b>121.725</b>	UNICOM <b>123.0 (CTAF) 0</b>
--------------------------	---	-----------------------	---------------------------------



CATEGORY	A	B	C	D
CIRCLING	1500-1	736 (800-1)	1560-2¼ 796 (800-2¼)	2000-3 1236 (1300-3)



# VOR-B

SE-4, 14 MAY 2026 to 11 JUN 2026

SE-4, 14 MAY 2026 to 11 JUN 2026