

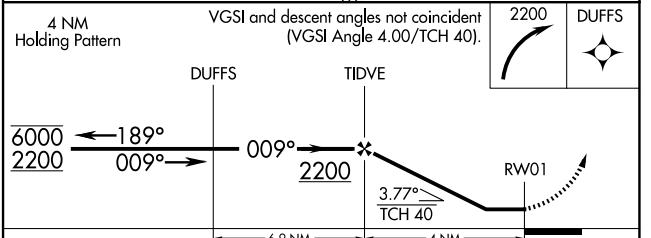
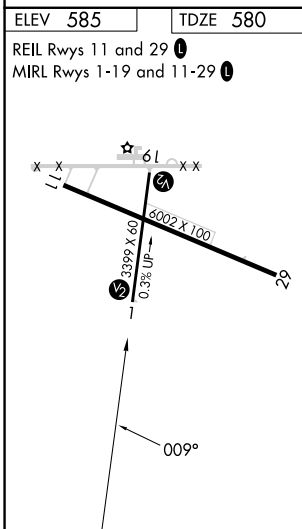
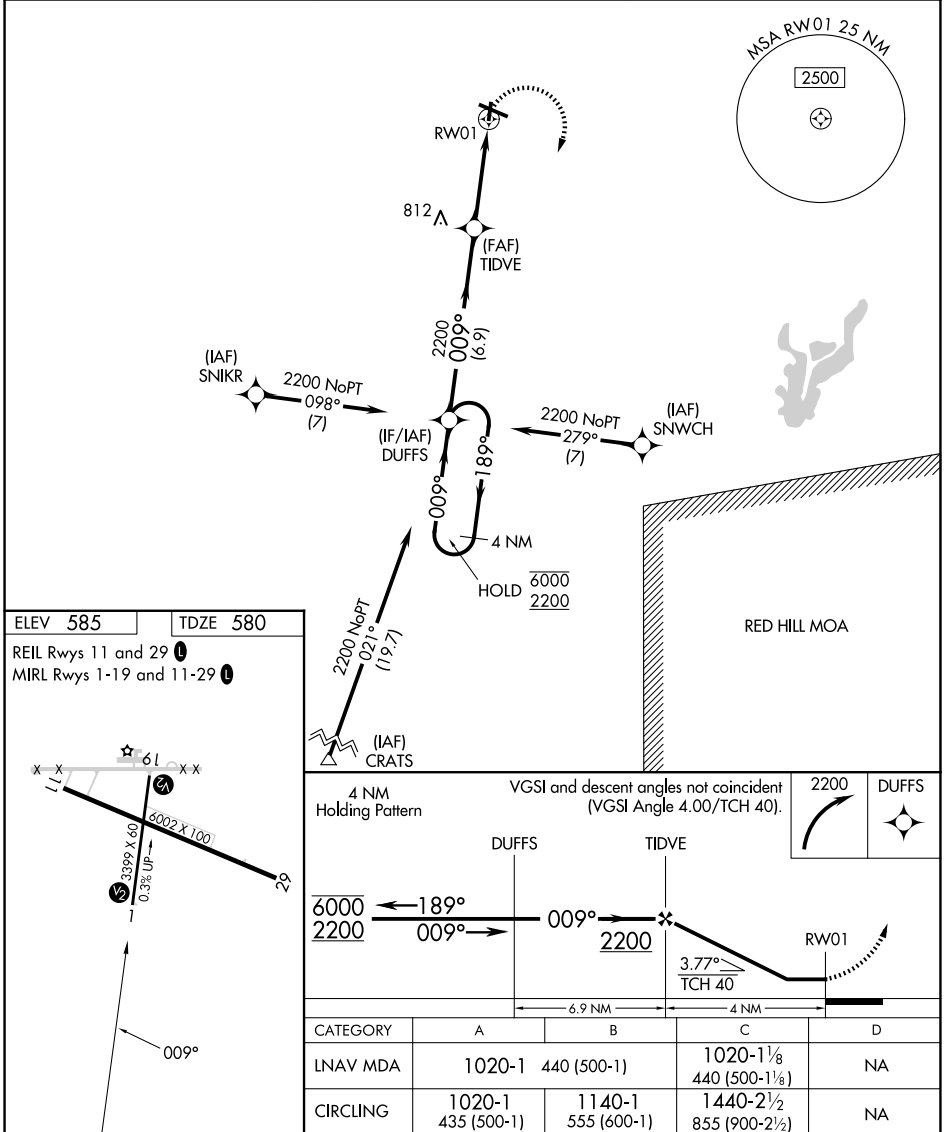
APP CRS	Rwy Ldg	<b>3399</b>
<b>009°</b>	TDZE	<b>580</b>
	Apt Elev	<b>585</b>

# RNAV (GPS) RWY 1

EFFINGHAM COUNTY RGNL (1H2)

RNP APCH - GPS.		MISSED APPROACH: Climbing right turn to 2200 direct DUFFS and hold.
▼	Rwy 1 helicopter visibility reduction below 1 SM NA. Straight-in Rwy 1 NA at night,	
▲	Circling Rwy 1, 19 NA at night.	

AWOS-3PT <b>118.375</b>	KANSAS CITY CENTER <b>124.3 269.15</b>	UNICOM <b>122.725 (CTAF) 0</b>
----------------------------	---	-----------------------------------



CATEGORY	A	B	C	D
LNAV MDA	1020-1	440 (500-1)	1020-1½ 440 (500-1½)	NA
CIRCLING	1020-1 435 (500-1)	1140-1 555 (600-1)	1440-2½ 855 (900-2½)	NA

EC-3, 14 MAY 2026 to 11 JUN 2026

EC-3, 14 MAY 2026 to 11 JUN 2026