

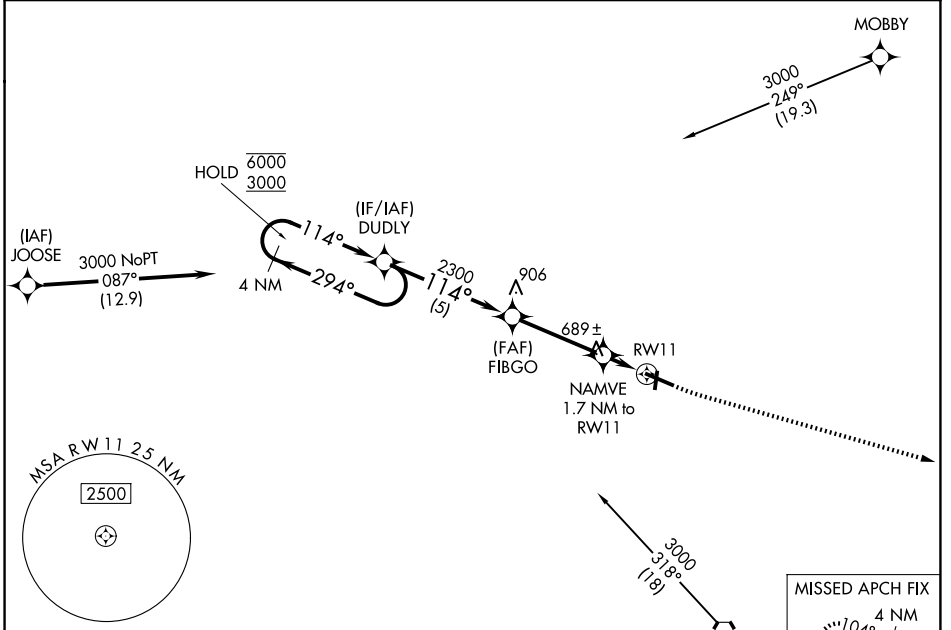
WAAS CH 99439 W11A	APP CRS 114°	Rwy Ldg 6002
		TDZE 585
		Apt Elev 585

RNAV (GPS) RWY 11

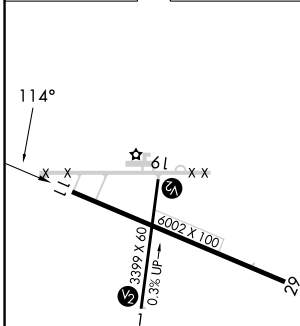
EFFINGHAM COUNTY RGNL (1H2)

RNP APCH - GPS.	MISSED APPROACH: Climb to 1800 then climbing left turn to 2300 direct JOVAR and hold.
<p>▼ For uncompensated Baro-VNAV systems, LNAV/VNAV NA below -16°C or above 54°C. Circling Rwy 1, 19 NA at night.</p>	

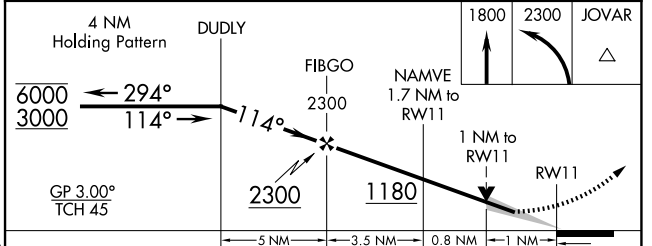
AWOS-3PT 118.375	KANSAS CITY CENTER 124.3 269.15	UNICOM 122.725 (CTAF) 0
----------------------------	---	-----------------------------------



ELEV 585	TDZE 585
----------	----------



Procedure NA for arrivals at BIB VORTAC on V12 eastbound.



CATEGORY	A	B	C	D
LPV DA		835-1	250 (300-1)	
LNAV/VNAV DA		940-1	355 (400-1)	
LNAV MDA		940-1	355 (400-1)	
CIRCLING	1020-1 435 (500-1)	1140-1 555 (600-1)	1440-2½ 855 (900-2½)	1440-2¾ 855 (900-2¾)

REIL Rwy 11 and 29
MIRL Rwy 1-19 and 11-29

EC-3, 14 MAY 2026 to 11 JUN 2026

EC-3, 14 MAY 2026 to 11 JUN 2026