

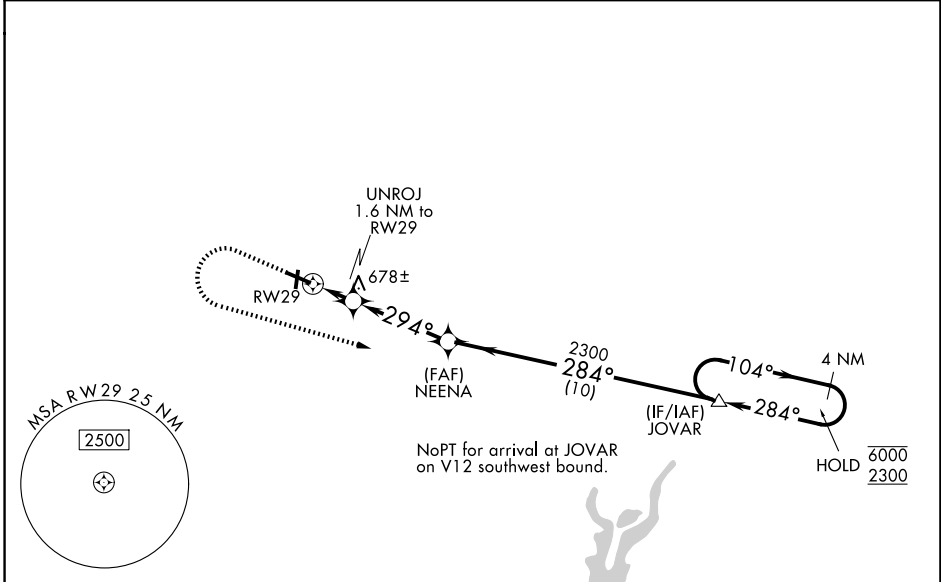
WAAS CH 93933 W29A	APP CRS 294°	Rwy Ldg TDZE 576 Apt Elev 585
--	------------------------	---

RNAV (GPS) RWY 29

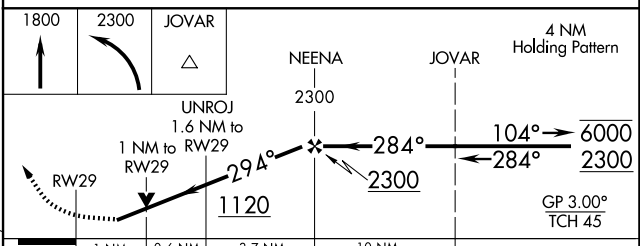
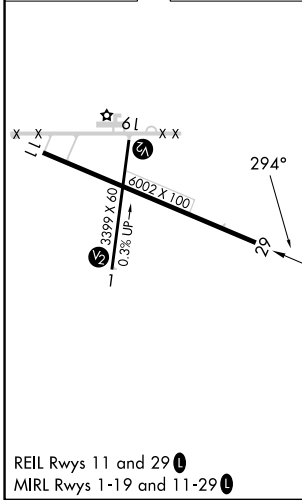
EFFINGHAM COUNTY RGNL (1H2)

RNP APCH - GPS.	<p>▼ Rwy 29 helicopter visibility reduction below 3/4 SM NA. ▲ For uncompensated Baro-VNAV systems, LNAV/VNAV NA below -16°C or above 54°C. Circling to Rwy 1, 19 NA at night.</p>	<p>MISSED APPROACH: Climb to 1800 then climbing left turn to 2300 direct JOVAR and hold.</p>
-----------------	--	---

AWOS-3PT 118.375	KANSAS CITY CENTER 124.3 269.15	UNICOM 122.725 (CTAF) 0
----------------------------	---	-----------------------------------



ELEV 585	TDZE 576
----------	----------



CATEGORY	A	B	C	D
LPV DA		835-1	259 (300-1)	
LNAV/VNAV DA		940-1	364 (400-1)	
LNAV MDA		940-1	364 (400-1)	
CIRCLING	1020-1 435 (500-1)	1140-1 555 (600-1)	1440-2½ 855 (900-2½)	1440-2¾ 855 (900-2¾)

EC-3, 14 MAY 2026 to 11 JUN 2026

EC-3, 14 MAY 2026 to 11 JUN 2026