

WAAS CH 70515 W15A	APP CRS 142°	Rwy Ldg TDZE 970 Apt Elev 970
----------------------------------------	------------------------	---------------------------------------------------

RNAV (GPS) RWY 15

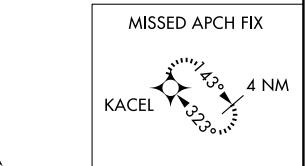
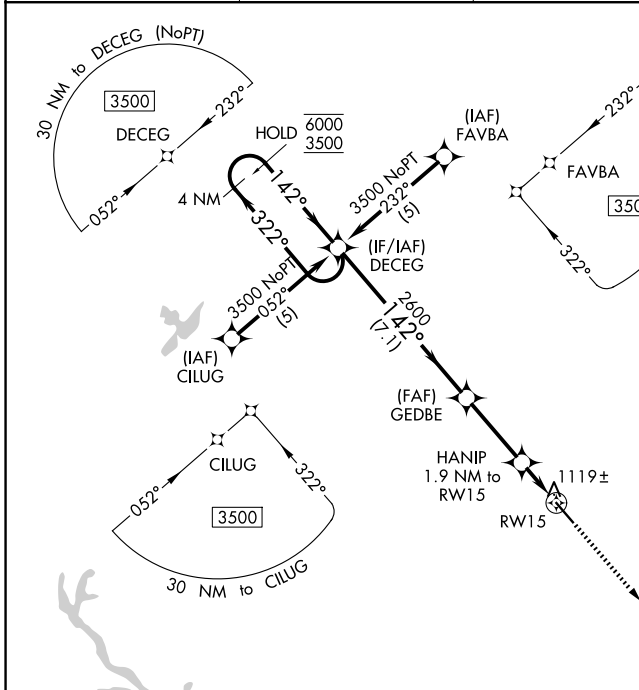
NEWNAN COWETA COUNTY (CCO)

RNP APCH.

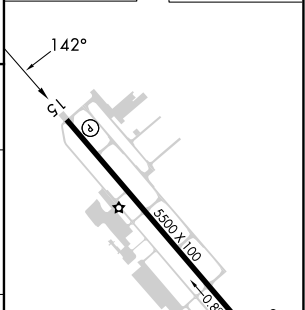
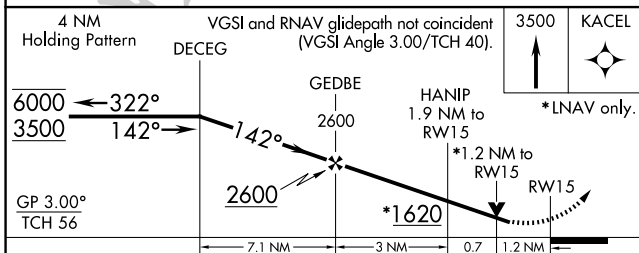
▼ Rwy 15 helicopter visibility reduction below 3/4 SM NA. For uncompensated Baro-VNAV systems, LNAV/VNAV NA below -16°C or above 47°C.

MISSED APPROACH: Climb to 3500 direct KACEL and hold.

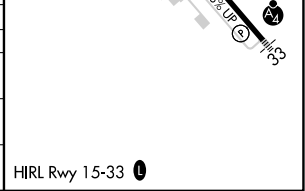
AWOS-3PT 118.975	ATLANTA APP CON 119.8 354.125	GCO 121.725	UNICOM 122.7 (CTAF) 0
----------------------------	-----------------------------------------	-----------------------	---------------------------------



ELEV 970	TDZE 970
----------	----------



CATEGORY	A	B	C	D
LPV DA		1300-1	330 (400-1)	
LNAV/VNAV DA		1389-1½	419 (500-1½)	
LNAV MDA	1380-1	410 (500-1)	1380-1¼	410 (500-1¼)
CIRCLING	1420-1	450 (500-1)	1560-1½ 590 (600-1½)	1560-2 590 (600-2)



SE-4, 14 MAY 2026 to 11 JUN 2026

SE-4, 14 MAY 2026 to 11 JUN 2026