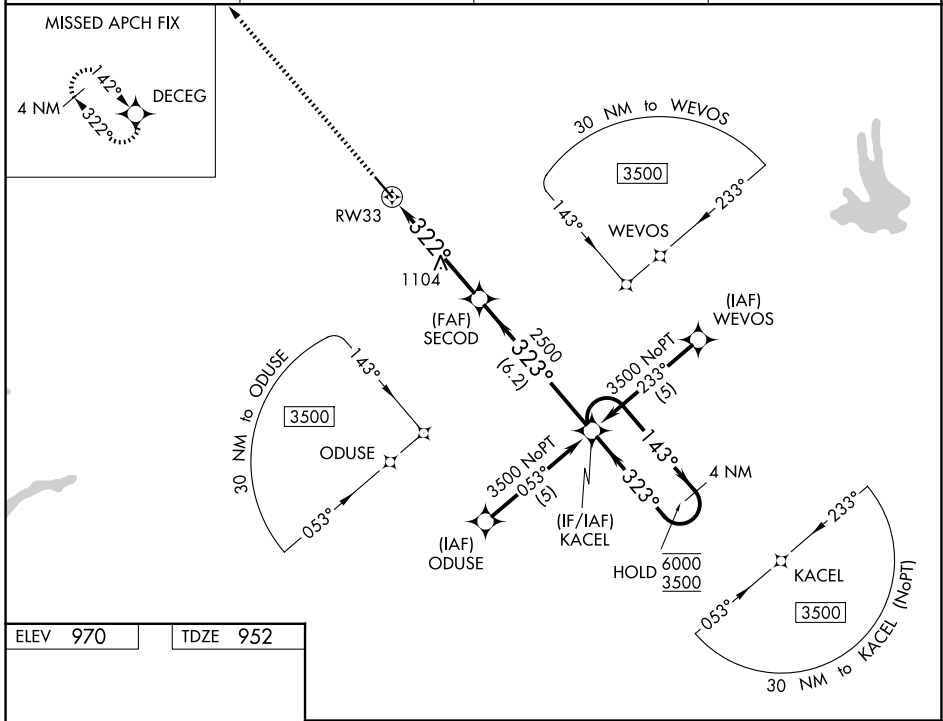


WAAS CH 77528 W33A	APP CRS 322°	Rwy Ldg TDZE 952 Apt Elev 970
--	------------------------	---

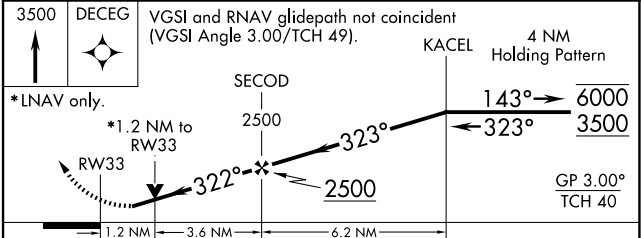
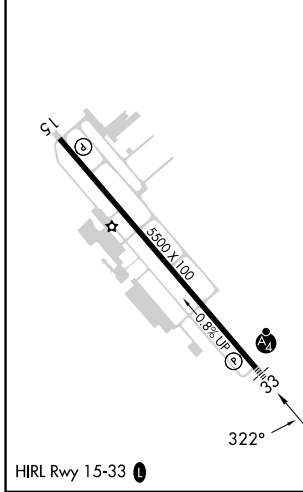
RNAV (GPS) RWY 33

NEWNAN COWETA COUNTY (CCO)

RNP APCH. ⚠ Rwy 33 helicopter visibility reduction below 3/4 SM NA. For uncompensated Baro-VNAV systems, LNAV/VNAV NA below -16°C or above 46°C. For inop ALS, increase LPV and LNAV/VNAV all Cats and LNAV Cats C/D visibilities to 1 1/8 SM. ⚠ MALSF MISSED APPROACH: Climb to 3500 direct DECEG and hold.			
AWOS-3PT 118.975	ATLANTA APP CON 119.8 354.125	GCO 121.725	UNICOM 122.7 (CTAF) 0



ELEV 970	TDZE 952
----------	----------



CATEGORY	A	B	C	D
LPV DA		1242-1	290 (300-1)	
LNAV/ VNAV DA		1286-1	334 (400-1)	
LNAV MDA		1360-1	408 (400-1)	
CIRCLING	1420-1	450 (500-1)	1560-1 1/2 590 (600-1 1/2)	1560-2 590 (600-2)

SE-4, 14 MAY 2026 to 11 JUN 2026

SE-4, 14 MAY 2026 to 11 JUN 2026