

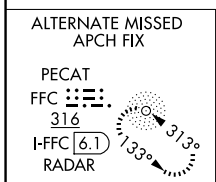
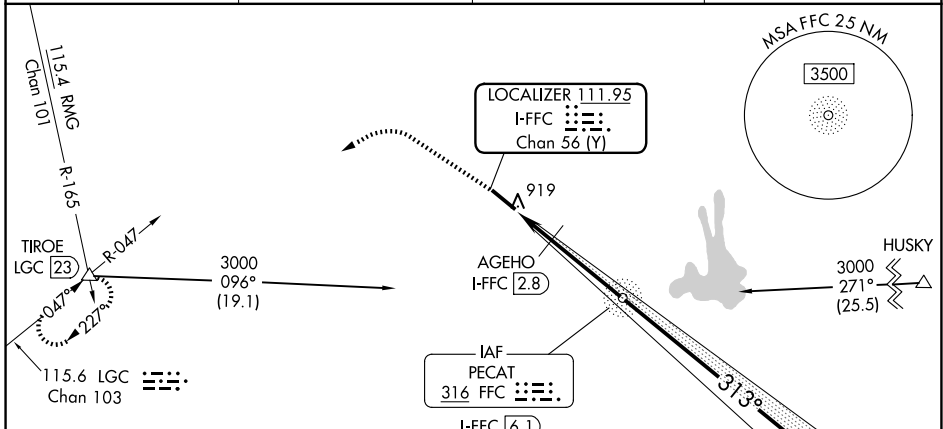
LOC/DME I-FFC 111.95 Chan 56 (Y)	APP CRS 313°	Rwy Ldg TDZE 5118 807 Apt Elev 808
---	------------------------	--

ILS or LOC RWY 31

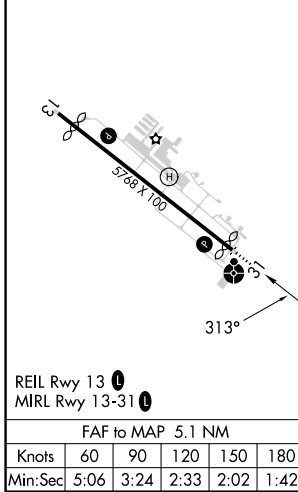
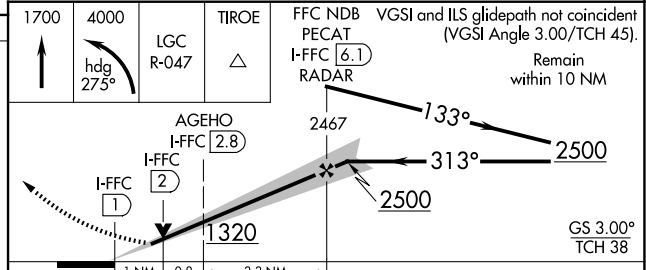
ATLANTA RGNL FALCON FLD (F'F'C)

DME or ADF or RADAR required.		ODALS	MISSED APPROACH: Climb to 1700 then climbing left turn to 4000 on heading 275° and LGC VORTAC R-047 to TIROE INT/LGC 23 DME and hold.
<p>◄ Circling Rwy 13 NA at night. Rwy 31 helicopter visibility reduction below 3/4 SM NA. Inop table does not apply to S-ILS 31 and to S-LOC 31 Cats C/D.</p>			

ASOS 118.525	ATLANTA APP CON 119.8 354.125	CLNC DEL 119.8	UNICOM 123.05 (CTAF)
------------------------	---	--------------------------	--------------------------------



ELEV 808	D	TDZE 807
----------	----------	----------



CATEGORY	A	B	C	D
S-ILS 31	1059-3/4		252 (300-3/4)	
S-LOC 31	1320-3/4	513 (600-3/4)	1320-1 3/8	513 (600-1 3/8)
CIRCLING	1320-1	512 (600-1)	1440-1 3/4 632 (700-1 3/4)	1540-2 1/4 732 (800-2 1/4)
AGEHO FIX MINIMUMS (DME REQUIRED)				
S-LOC 31	1180-3/4	373 (400-3/4)	1180-1	373 (400-1)
CIRCLING	1320-1	512 (600-1)	1440-1 3/4 632 (700-1 3/4)	1540-2 1/4 732 (800-2 1/4)

SE-4, 14 MAY 2026 to 11 JUN 2026

SE-4, 14 MAY 2026 to 11 JUN 2026