

WAAS CH 61006 W13A	APP CRS 133°	Rwy Ldg TDZE Apt Elev	4625 797 808
--	------------------------	-----------------------------	---

RNAV (GPS) RWY 13

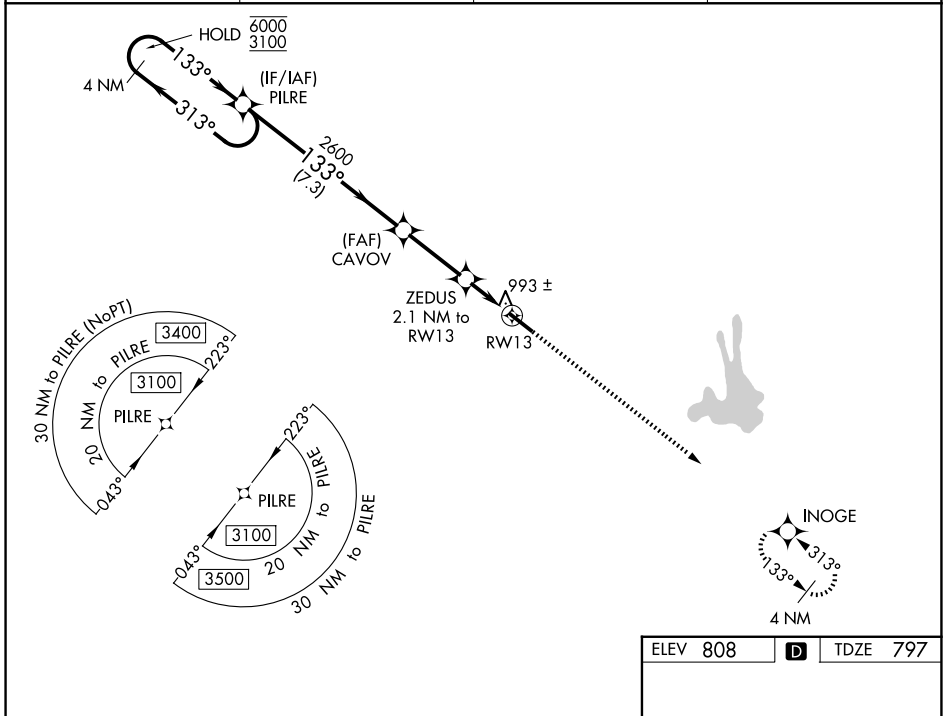
ATLANTA RGNL FALCON FLD (F'FC)

RNP APCH-GPS.

▼ Helicopter visibility reduction below 3/4 SM NA. For uncompensated Baro-VNAV systems, LNAV/VNAV NA below -6°C or above 54°C.

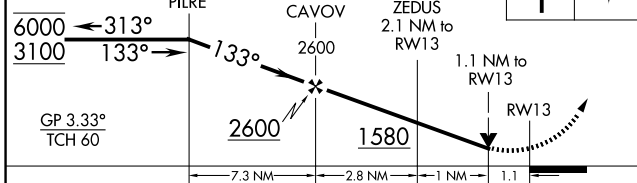
MISSED APPROACH: Climb to 3000 direct INOGE and hold.

ASOS 118.525	ATLANTA APP CON 119.8 354.125	CINC DEL 119.8	UNICOM 123.05 (CTAF) 0
------------------------	---	--------------------------	----------------------------------

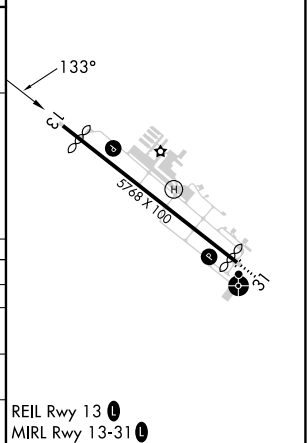


ELEV 808	D	TDZE 797
----------	----------	----------

4 NM Holding Pattern
VGSI and RNAV glidepath not coincident. (VGSI Angle 3.50/TCH 38).



CATEGORY	A	B	C	D
LPV DA		1184-1 1/8	387 (400-1 1/8)	
LNAV/VNAV DA		1230-1 1/4	433 (500-1 1/4)	
LNAV MDA	1260-1	463 (500-1)	1260-1 3/8	463 (500-1 3/8)
CIRCLING	1320-1	512 (600-1)	1440-1 3/4	1540-2 1/4



SE-4, 14 MAY 2026 to 11 JUN 2026

SE-4, 14 MAY 2026 to 11 JUN 2026